

(GLAZY1.GLAZY) 23054

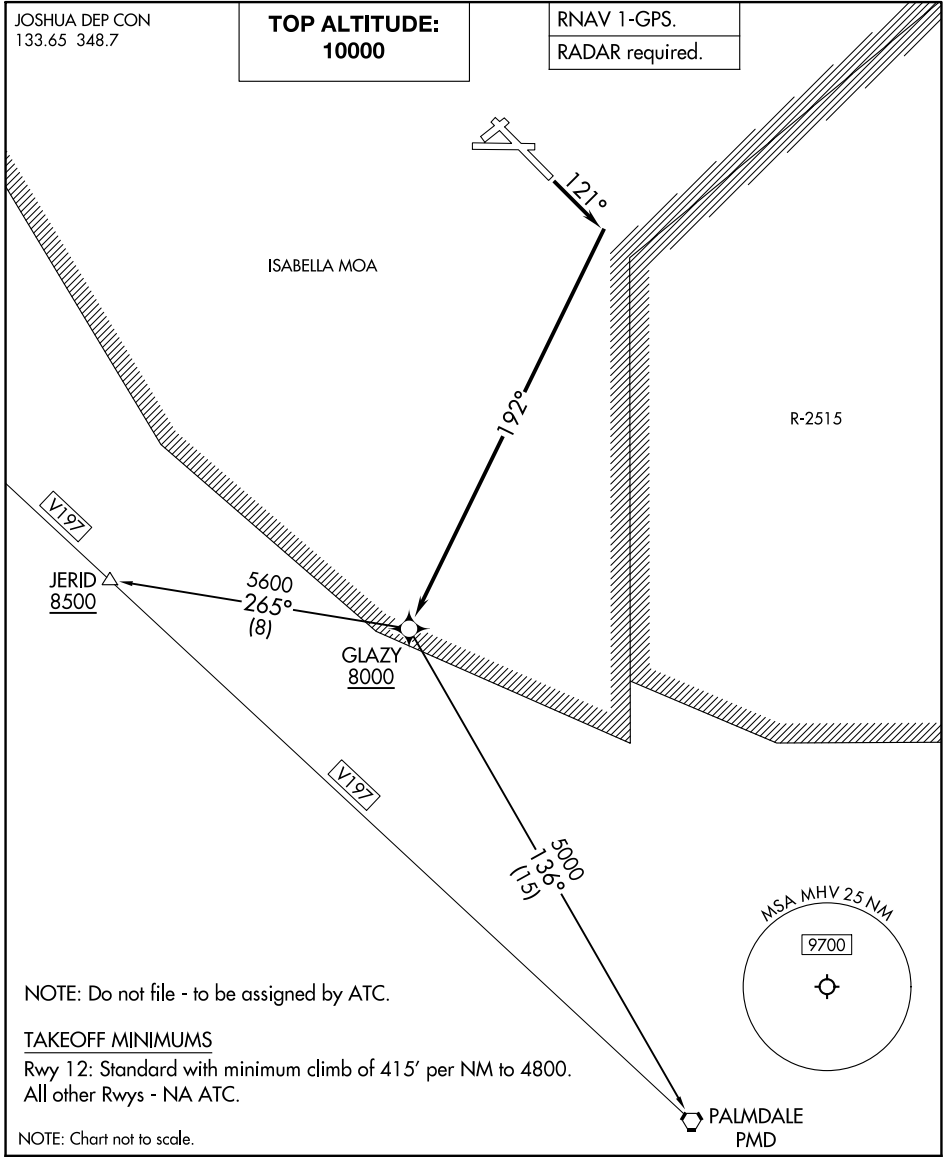
# GLAZY ONE DEPARTURE (RNAV)

MOJAVE AIR & SPACE PORT/RUTAN FLD (MHV)  
AL-9353 (FAA-O) MOJAVE, CALIFORNIA

JOSHUA DEP CON  
133.65 348.7

**TOP ALTITUDE:**  
**10000**

RNAV 1-GPS.  
RADAR required.



SW-3, 07 SEP 2023 to 05 OCT 2023

SW-3, 07 SEP 2023 to 05 OCT 2023

NOTE: Do not file - to be assigned by ATC.

### TAKEOFF MINIMUMS

Rwy 12: Standard with minimum climb of 415' per NM to 4800.  
All other Rwy's - NA ATC.

NOTE: Chart not to scale.

### DEPARTURE ROUTE DESCRIPTION

TAKEOFF RUNWAY 12: Climb on heading 121° to intercept course 192° to cross GLAZY at or above 8000, then on depicted route. Expect filed altitude 10 minutes after departure.

JERID TRANSITION (GLAZY1.JERID)

PALMDALE TRANSITION (GLAZY1.PMD)

**GLAZY ONE DEPARTURE (RNAV)**  
(GLAZY1.GLAZY) 23FEB23

MOJAVE, CALIFORNIA  
MOJAVE AIR & SPACE PORT/RUTAN FLD (MHV)