

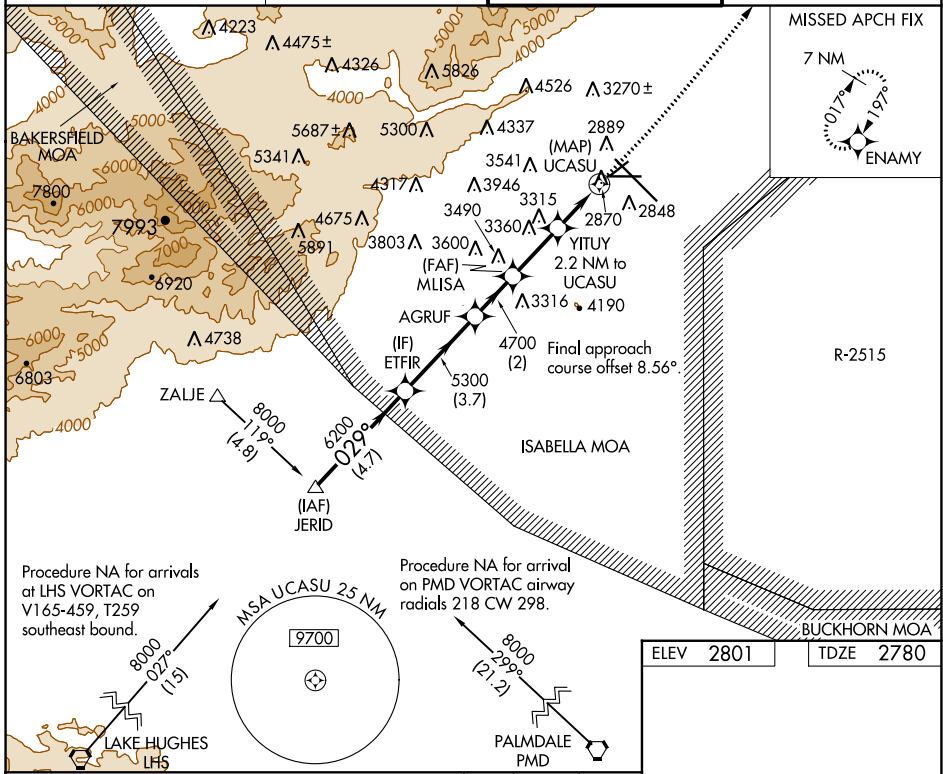
WAAS CH <b>77743</b> <b>W04A</b>	APP CRS <b>029°</b>	Rwy Idg TDZE Apt Elev	<b>4747</b> <b>2780</b> <b>2801</b>
--	------------------------	-----------------------------	---

# RNAV (GPS) RWY 4

MOJAVE AIR & SPACE PORT/RUTAN FLD (MHV)

RNP APCH.	MISSED APPROACH: Climb to 3300 then climbing left turn to 7000 direct ENAMY and hold, continue climb-in-hold to 7000.
<p><b>▽</b> Circling NA southeast of Rwy 4 and south of Rwy 26 .</p> <p><b>▲</b> Rwy 4 helicopter visibility reduction below ¾ SM NA.</p>	

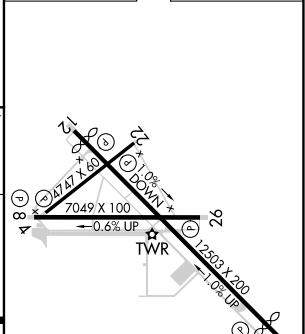
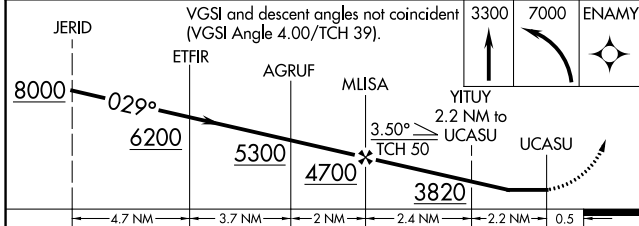
AWOS-3 <b>132.225</b>	JOSHUA APP CON <b>133.65 348.7</b>	MOJAVE TOWER * <b>127.6 (CTAF) 0 288.35</b>	GND CON <b>123.9</b>
--------------------------	---------------------------------------	--	-------------------------



Procedure NA for arrivals at LHS VORTAC on V165-459, T259 southeast bound.

Procedure NA for arrival on PMD VORTAC airway radials 218 CW 298.

ELEV 2801	TDZE 2780
-----------	-----------



CATEGORY	A	B	C	D
LP MDA	3180-1	400 (400-1)	3180-1½	400 (400-1½)
LNNAV MDA	3180-1	400 (400-1)	3180-1½	400 (400-1½)
<b>CIRCLING</b>	3300-1 499 (500-1)	3480-1 679 (700-1)	4140-3 1339 (1400-3)	4500-3 1699 (1700-3)

REIL Rwy 12 and 30 **⬇**  
 MIRL Rwy 8-26 and 4-22 **⬇**  
 HIRL Rwy 12-30 **⬇**

SW-3, 07 SEP 2023 to 05 OCT 2023

SW-3, 07 SEP 2023 to 05 OCT 2023