

WAAS CH 61121 W05A	APP CRS 053°	Rwy Idg TDZE 215 Apt Elev 215	5494
--	------------------------	---	-------------

RNAV (GPS) RWY 5

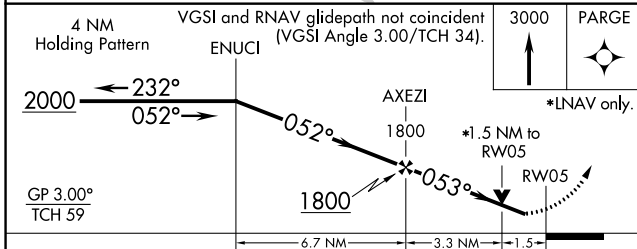
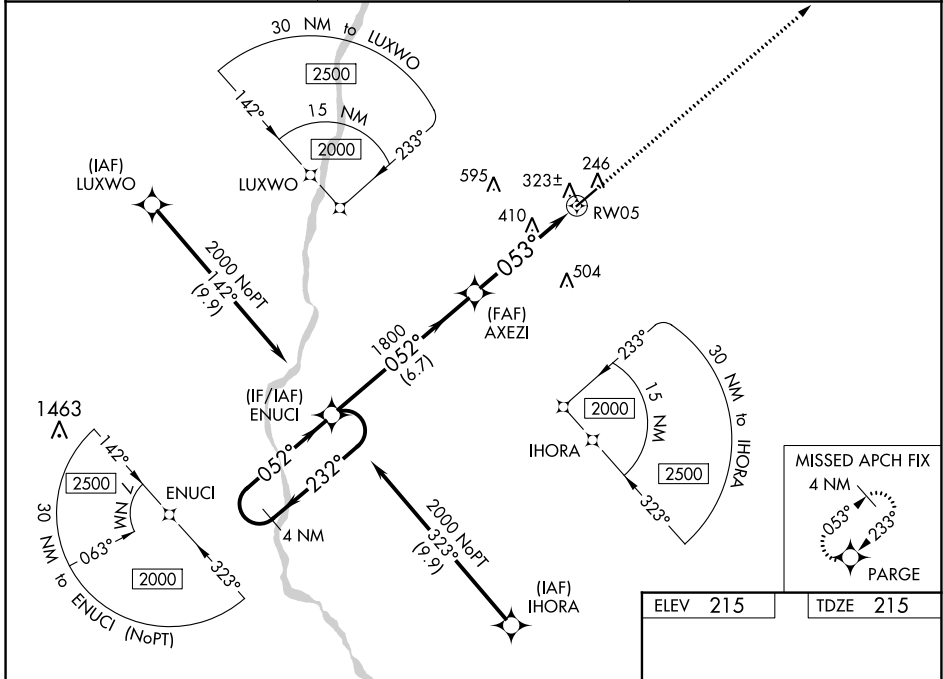
EARLY COUNTY (BIJ)

RNP APCH - GPS.

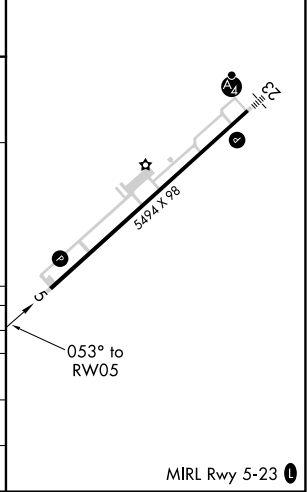
▼ For uncompensated Baro-VNAV systems, LNAV/VNAV NA below -15°C or above 54°C.
 ▲ Rwy 5 helicopter visibility reduction below ¼ SM NA. Baro-VNAV and VDP NA when using Bainbridge altimeter setting. When local altimeter setting not received, use Bainbridge altimeter setting and increase LPV DA to 605 feet and all visibilities ½ SM. Increase LNAV/VNAV DA to 657 feet and all visibilities ¾ SM. Increase all MDA 80 feet and LNAV visibility Cat C/D ¼ SM, and Circling visibility Cat C/D ¼ SM.

MISSED APPROACH:
Climb to 3000 direct PARGE and hold.

AWOS-3PT 118.475	CAIRNS APP CON ★ 125.4 327.125	CTAF 122.9 0
----------------------------	--	------------------------



ELEV 215	TDZE 215
----------	----------



CATEGORY	A	B	C	D
LPV DA		528-1	313 (400-1)	
LNAV/VNAV DA		580-1	365 (400-1)	
LNAV MDA	740-1	525 (600-1)	740-1½	525 (600-1½)
CIRCLING	740-1	525 (600-1)	860-1¾ 645 (700-1¾)	960-2½ 745 (800-2½)

SE-4, 07 SEP 2023 to 05 OCT 2023

SE-4, 07 SEP 2023 to 05 OCT 2023