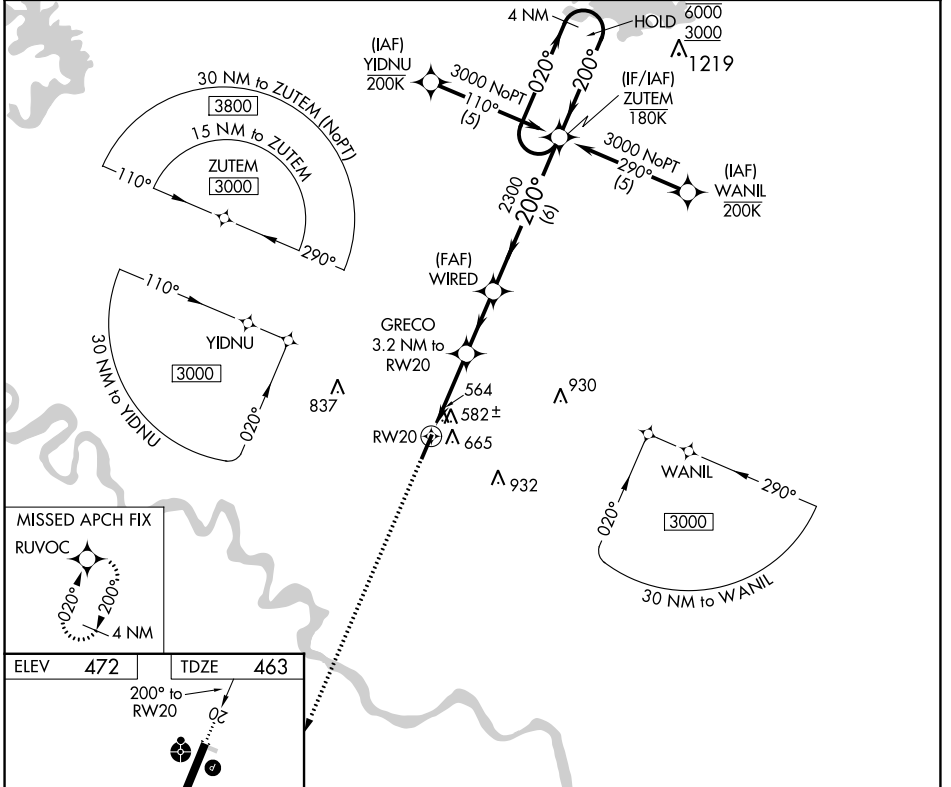


WAAS CH 69442 W20A	APP CRS 200°	Rwy Idg 5002 TDZE 463 Apt Elev 472
--	------------------------	---

RNAV (GPS) RWY 20

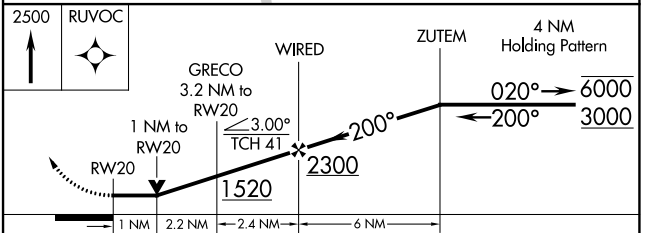
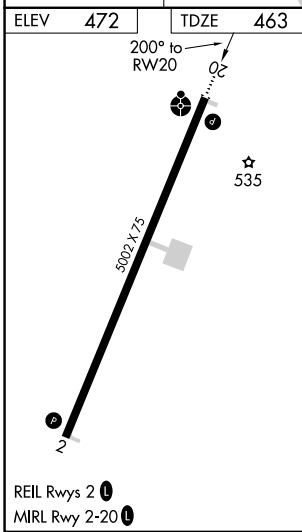
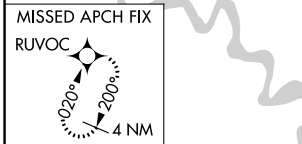
MC CURTAIN COUNTY RGNL (404)

RNP APCH. ▼ Rwy 20 helicopter visibility reduction below ¾ SM NA.	ODALS ☼	MISSED APPROACH: Climb to 2500 direct RUVOC and hold.
AWOS-3 120.0	FORT WORTH CENTER 123.925 269.475	UNICOM 122.8 (CTAF) 0



SC-1, 07 SEP 2023 to 05 OCT 2023

SC-1, 07 SEP 2023 to 05 OCT 2023



CATEGORY	A	B	C	D
LP MDA	820-1 357 (400-1)			NA
LNAV MDA	960-1	497 (500-1)	960-1⅓ 497 (500-1⅓)	NA
CIRCLING	1020-1	548 (600-1)	1100-1¼ 628 (700-1¼)	NA