

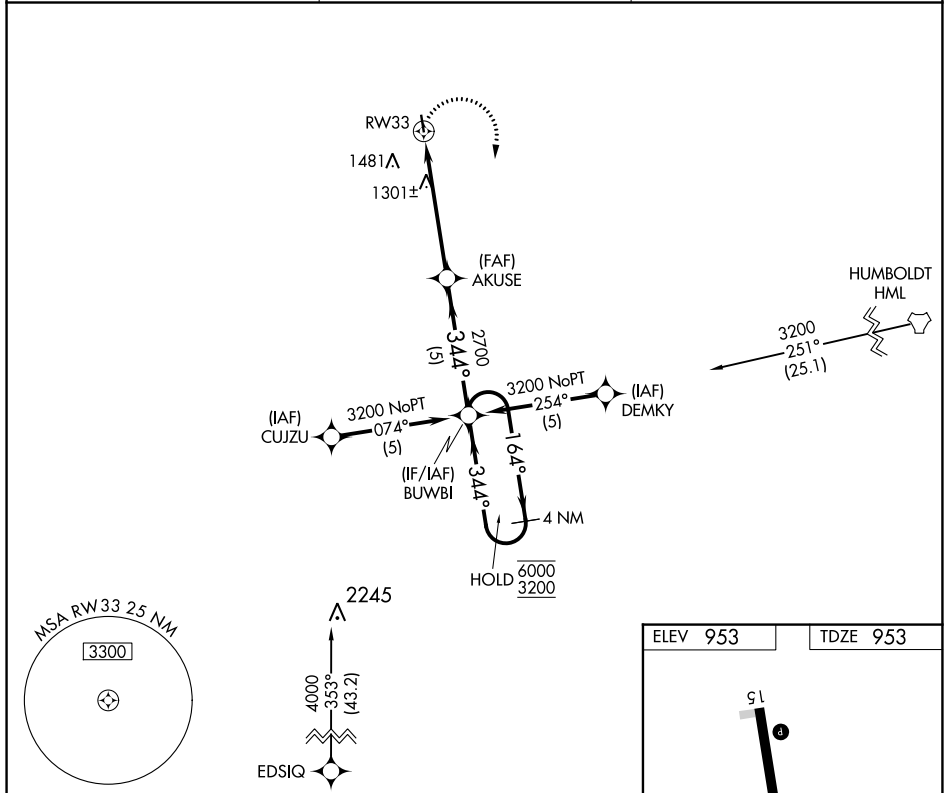
APP CRS	Rwy Idg	3400
344°	TDZE	953
	Apt Elev	953

RNAV (GPS) RWY 33

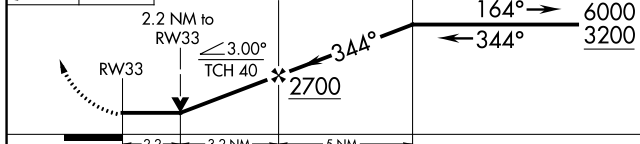
WALHALLA MUNI (96D)

RNP APCH-GPS.	MISSED APPROACH: Climbing right turn to 3200 direct BUWBI and hold.
<p>▼ Rwy 33 helicopter visibility reduction below ¼ SM NA.</p> <p>▲ When local altimeter setting not received, use Hallock altimeter setting.</p>	

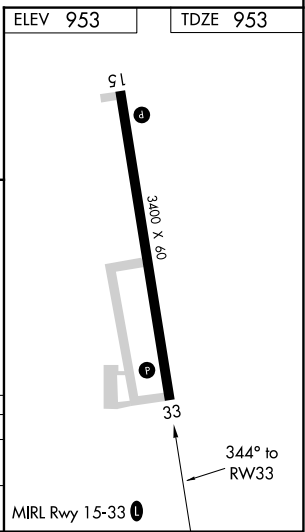
AWOS-3PT 118.175	MINNEAPOLIS CENTER 132.15 269.6	CTAF 122.9
----------------------------	---	----------------------



3200	BUWBI	VGSI and descent angles not coincident (VGSI Angle 3.00/TCH 28).	4 NM Holding Pattern
------	-------	--	----------------------



CATEGORY	A	B	C	D
LNVA MDA	1680-1	727 (800-1)	NA	
CIRCLING	1680-1 727 (800-1)	1960-1½ 1007 (1100-1½)	NA	



NC-1, 07 SEP 2023 to 05 OCT 2023

NC-1, 07 SEP 2023 to 05 OCT 2023