

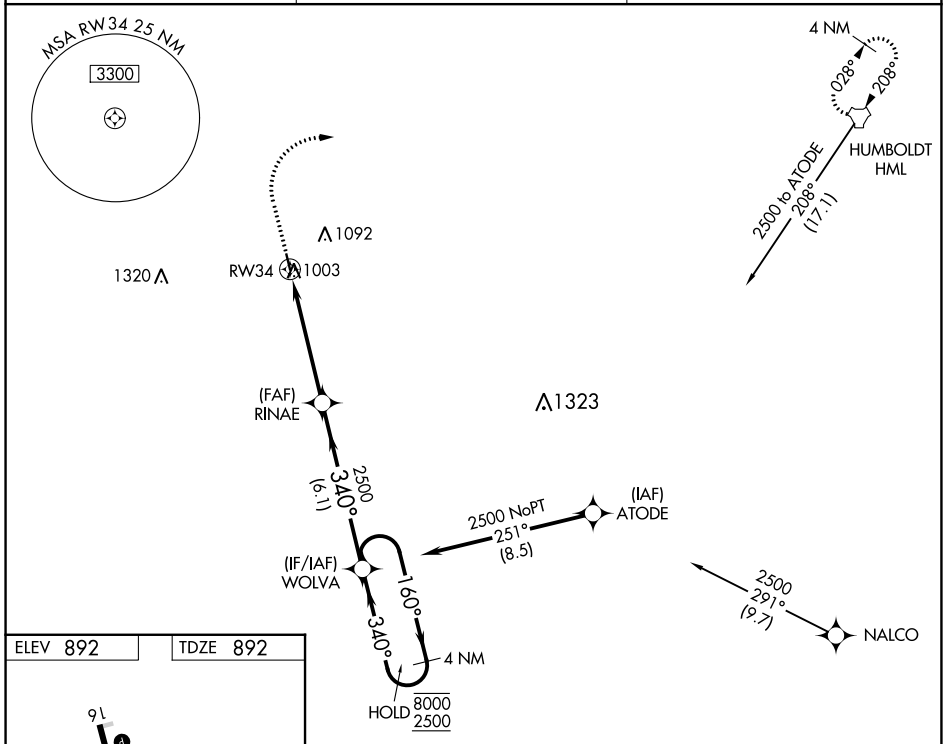
WAAS CH <b>45630</b> <b>W34A</b>	APP CRS <b>340°</b>	Rwy Idg TDZE Apt Elev	<b>3299</b> <b>892</b> <b>892</b>
--	------------------------	-----------------------------	---

# RNAV (GPS) RWY 34

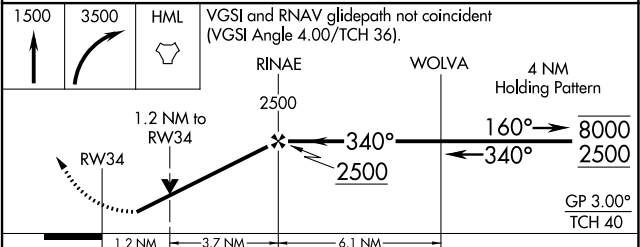
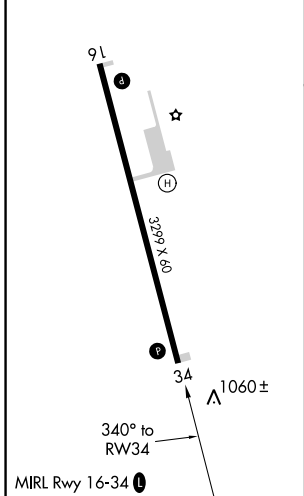
CAVALIER MUNI (2C8)

RNP APCH-GPS.	MISSED APPROACH: Climb to 1500 then climbing right turn to 3500 direct HML TACAN and hold.
<p>⚠ Circling Rwy 16 NA at night.</p> <p>⚠ Rwy 34 helicopter visibility reduction below 3/4 SM NA.</p>	

AWOS-3 <b>118.275</b>	MINNEAPOLIS CENTER <b>132.15 269.6</b>	UNICOM <b>122.8 (CTAF) 0</b>
--------------------------	---	---------------------------------



ELEV 892	TDZE 892
----------	----------



CATEGORY	A	B	C	D
LPV DA	1157-1 265 (300-1)			NA
LNAV MDA	1440-1	548 (600-1)	1440-1½ 548 (600-1½)	NA
<b>C</b> CIRCLING	1440-1	548 (600-1)	1440-1½ 548 (600-1½)	NA

NC-1, 07 SEP 2023 to 05 OCT 2023

NC-1, 07 SEP 2023 to 05 OCT 2023