

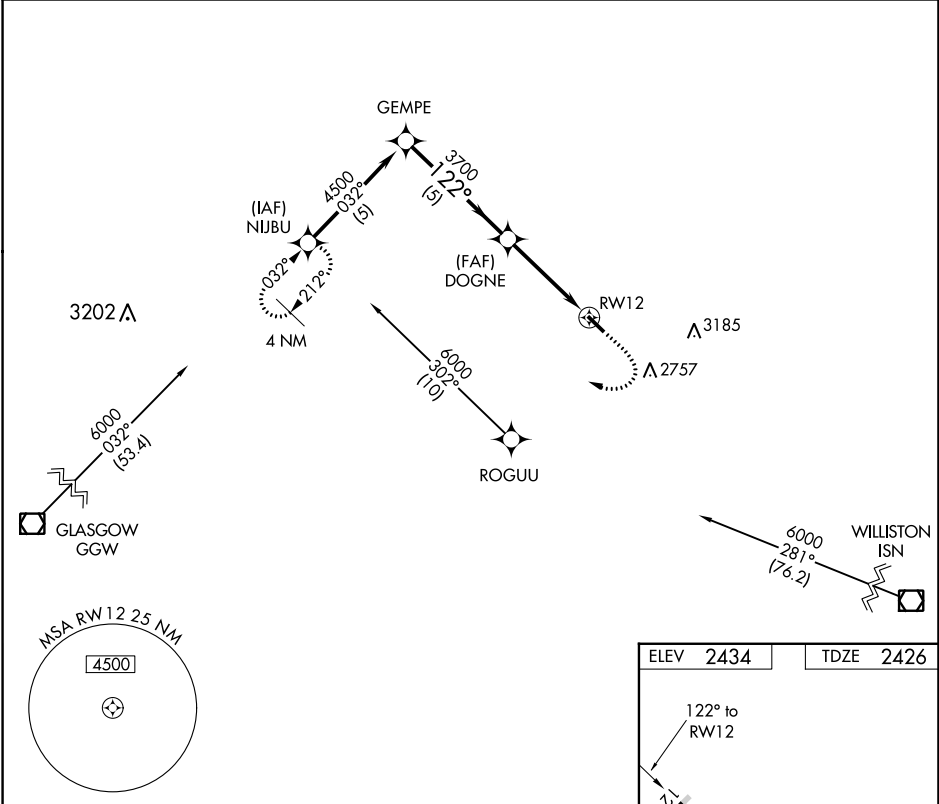
APP CRS 122°	Rwy Idg 4020
	TDZE 2426
	Apt Elev 2434

RNAV (GPS) RWY 12

SCOBEY (9S2)

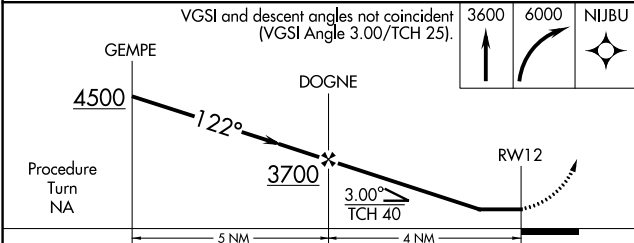
<p>▽ DME/DME RNP-0.3 NA. Use Wolf Point altimeter setting; when not received procedure not authorized.</p> <p>△ NA Helicopter visibility reduction below 3/4 SM NA.</p>	<p>MISSED APPROACH: Climb to 3600 then climbing right turn to 6000 direct NIJBU WP and hold.</p>
---	---

<p>OLF ASOS 118.325</p>	<p>SALT LAKE CITY CENTER 126.85 305.2</p>	<p>AUNICOM 122.8 (CTAF) 0</p>
------------------------------------	--	--



NW-1, 07 SEP 2023 to 05 OCT 2023

NW-1, 07 SEP 2023 to 05 OCT 2023



ELEV 2434	TDZE 2426
-----------	-----------

This block provides a detailed view of the final approach from NIJBU to RW12. It shows a 1.7% climb gradient and a 4020x75 obstacle. The heading is 122° to RW12. A 30° turn is indicated at the end of the segment. Below the diagram is the MIRL Rwy 12-30 0 symbol.

CATEGORY	A	B	C	D
LNVA MDA	3100-1	674 (700-1)		NA
CIRCLING	3100-1 666 (700-1)	3160-1 726 (800-1)		NA