

APP CRS	Rwy Idg	<b>4195</b>
<b>013°</b>	TDZE	<b>2941</b>
	Apt Elev	<b>2941</b>

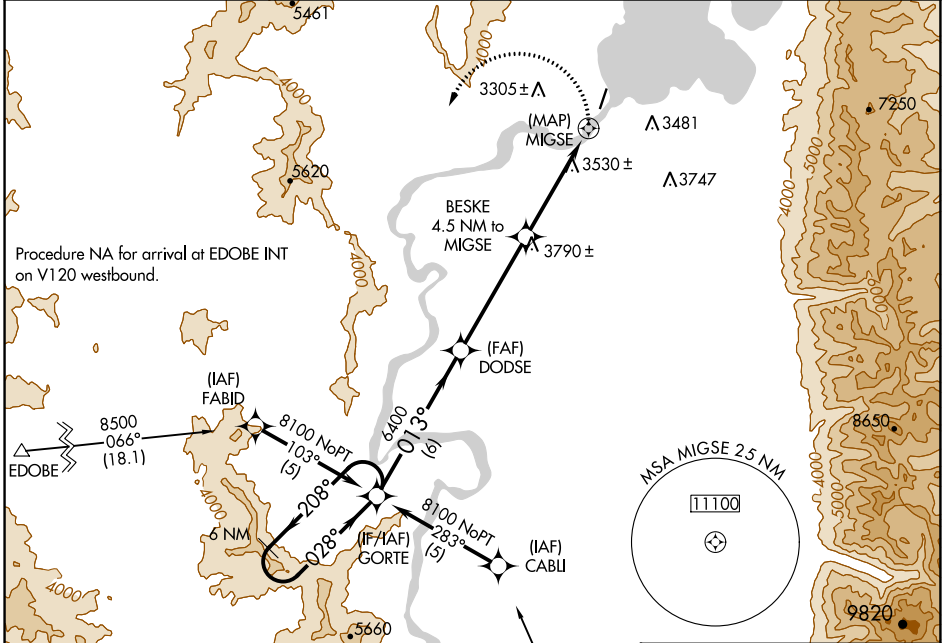
# RNAV (GPS) RWY 36

POLSON (8S1)

**NA** Procedure NA at night. DME/DME RNP-0.3 NA. Use Glacier Park Inl altimeter setting. Helicopter visibility reduction below 1 SM NA.

**MISSED APPROACH:** Climbing left turn to 9000 direct GORTE WP and hold.

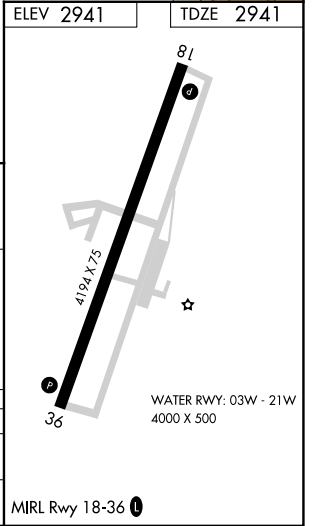
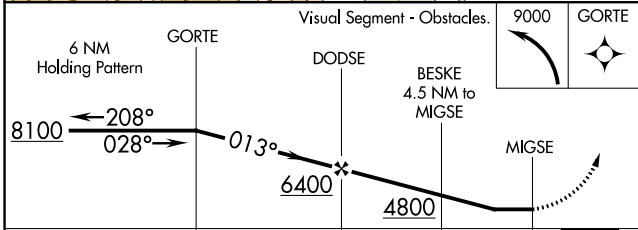
GPI ASOS <b>132.625</b>	SALT LAKE CENTER <b>127.075 244.875</b>	UNICOM <b>122.8 (CTAF) 0</b>
----------------------------	--	---------------------------------



NW-1, 07 SEP 2023 to 05 OCT 2023

NW-1, 07 SEP 2023 to 05 OCT 2023

ELEV 2941	TDZE 2941
-----------	-----------



CATEGORY	A	B	C	D
LNAV	4340-1¼ 1399 (1400-1¼)	4340-1½ 1399 (1400-1½)	NA	
CIRCLING	4340-1¼ 1399 (1400-1¼)	4340-1½ 1399 (1400-1½)	NA	