

APP CRS	Rwy ldg	<b>2703</b>
<b>008°</b>	TDZE	<b>196</b>
	Apt Elev	<b>196</b>

# RNAV (GPS) RWY 1

SOUTH ALBANY (4BØ)

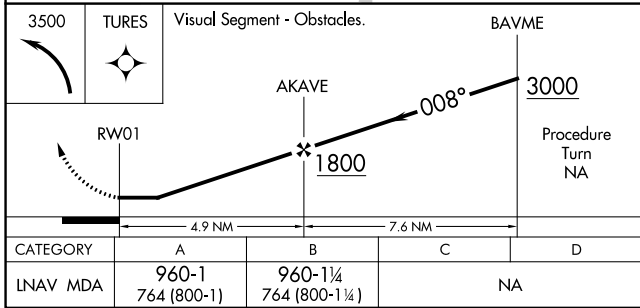
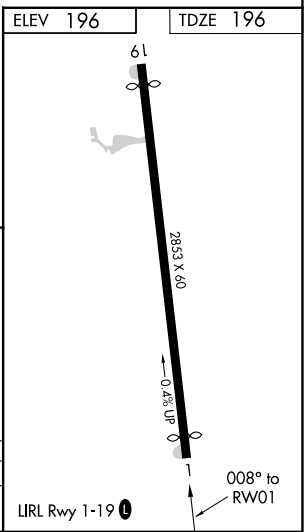
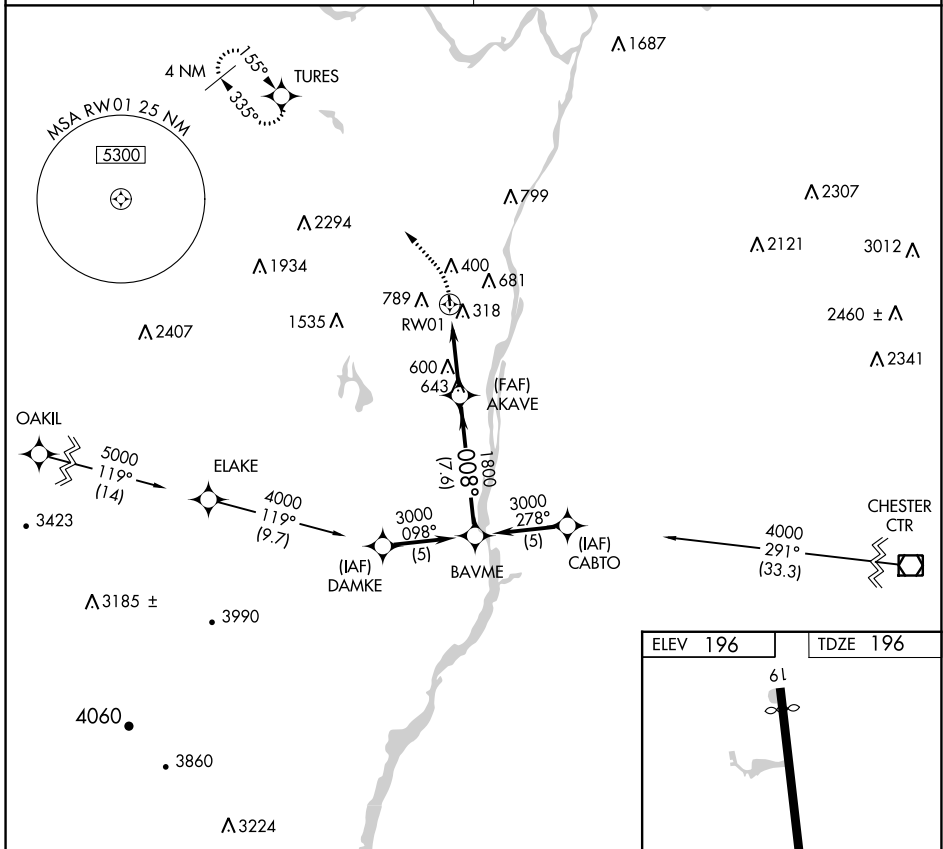
RNP APCH.

- ▼ Use Albany Intl altimeter setting. Procedure NA at night.
- ▲ NA Rwy 1 helicopter visibility reduction below 1 SM NA.

MISSED APPROACH: Climbing left turn to 3500 direct TURES WP and hold.

ALBANY APP CON  
**118.05 263.075**

CTAF  
**122.9 0**



NE-2, 07 SEP 2023 to 05 OCT 2023

NE-2, 07 SEP 2023 to 05 OCT 2023