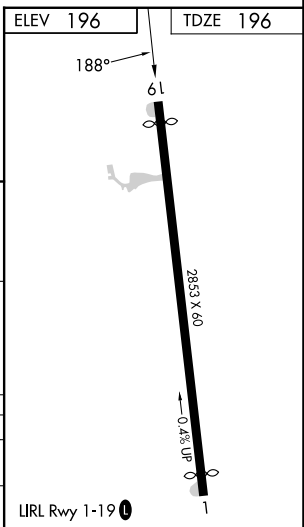
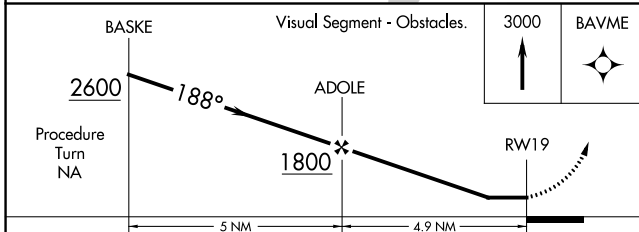
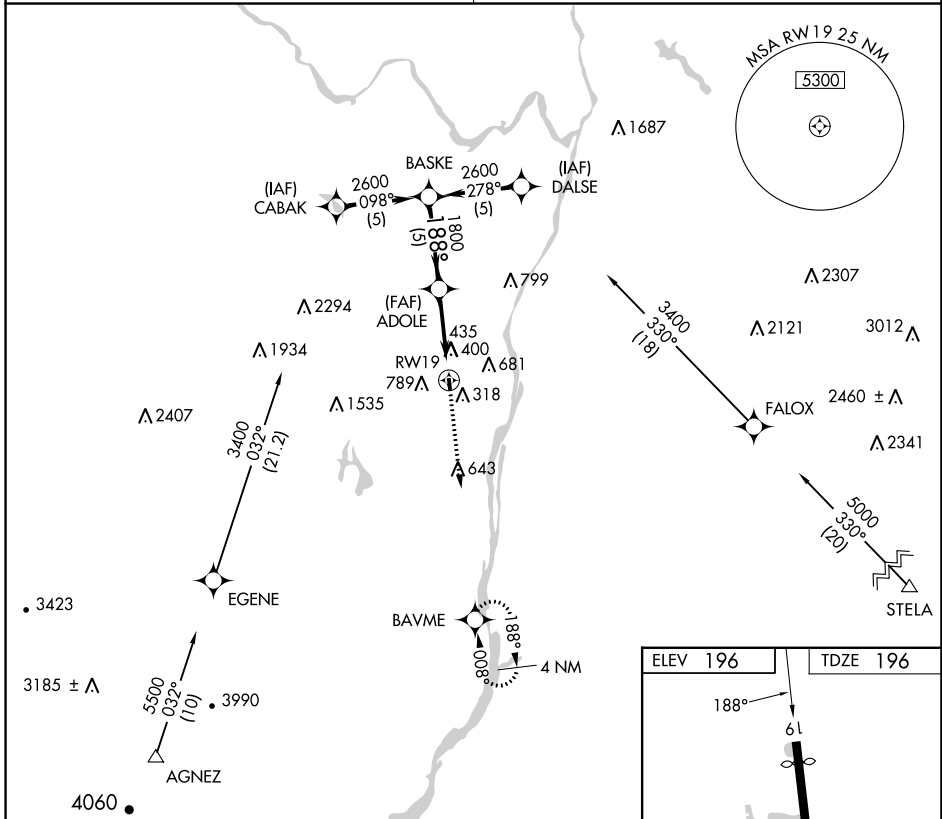


APP CRS	Rwy Idg	2729
188°	TDZE	196
	Apt Elev	196

RNAV (GPS) RWY 19

SOUTH ALBANY (4B0)

RNP APCH.	Use Albany Intl altimeter setting. Procedure NA at night. Rwy 19 helicopter visibility reduction below 1 SM NA.	MISSED APPROACH: Climb to 3000 direct BAVME WP and hold.
ALBANY APP CON 118.05 263.075		



CATEGORY	A	B	C	D
LNAV MDA	740-1	544 (600-1)	NA	
CIRCLING	840-1 644 (700-1)	1180-1½ 984 (1000-1½)	NA	

NE-2, 07 SEP 2023 to 05 OCT 2023

NE-2, 07 SEP 2023 to 05 OCT 2023