

WAAS CH 72935 W21A	APP CRS 207°	Rwy Idg TDZE 626 Apt Elev 633
--	------------------------	---

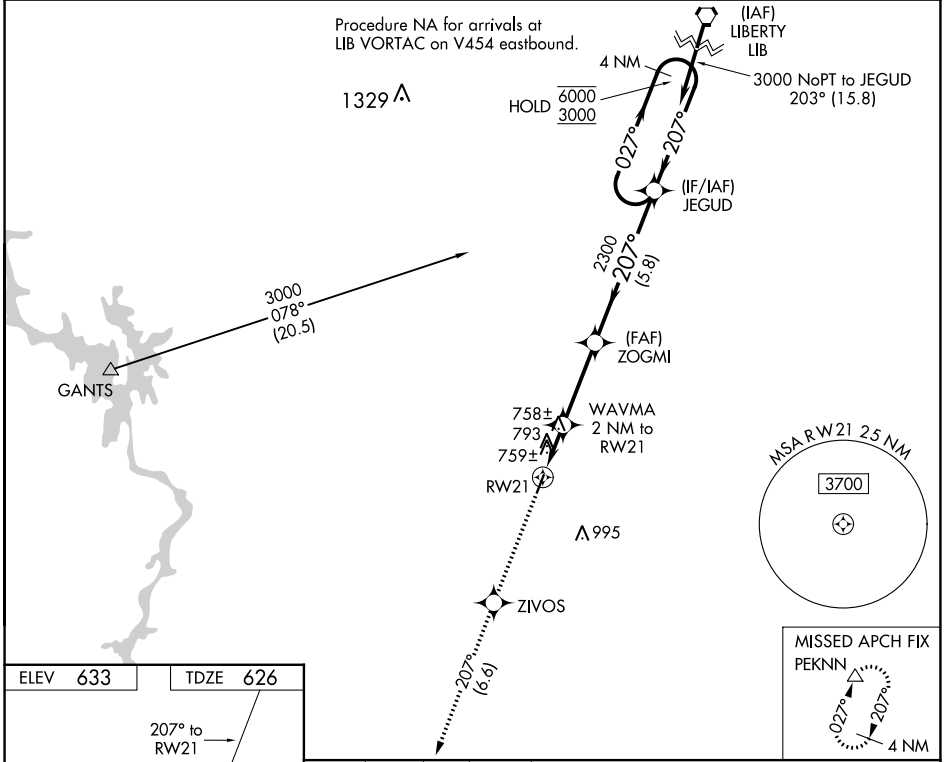
RNAV (GPS) RWY 21

MONTGOMERY COUNTY (43A)

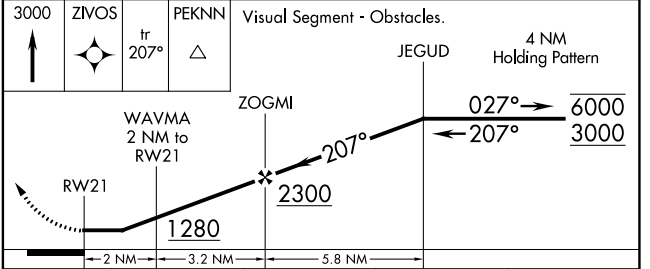
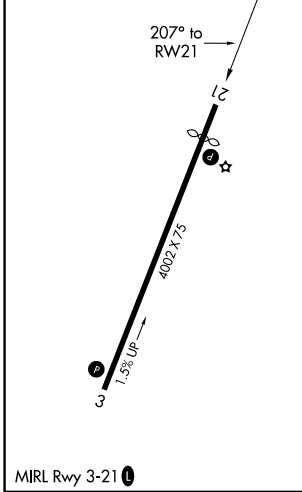
RNP APCH-GPS. MISSED APPROACH: Climb to 3000 direct ZIVOS and on track 207° to PEKNN and hold.

▼ Rwy 21 helicopter visibility reduction below 1 SM NA. Use Asheboro altimeter setting; when not received, use Albemarle altimeter setting. Procedure NA at night.

HBI AWOS-3 119.275	FAYETTEVILLE APP CON 127.8 343.725	UNICOM 122.8 (CTAF) 0
------------------------------	--	---------------------------------



ELEV 633	TDZE 626
----------	----------



CATEGORY	A	B	C	D
LP MDA	1060-1	434 (500-1)		NA
LNAV MDA	1100-1	474 (500-1)		NA
<input checked="" type="checkbox"/> CIRCLING	1240-1 607 (700-1)	1340-1 707 (800-1)		NA

SE-2, 07 SEP 2023 to 05 OCT 2023

SE-2, 07 SEP 2023 to 05 OCT 2023