

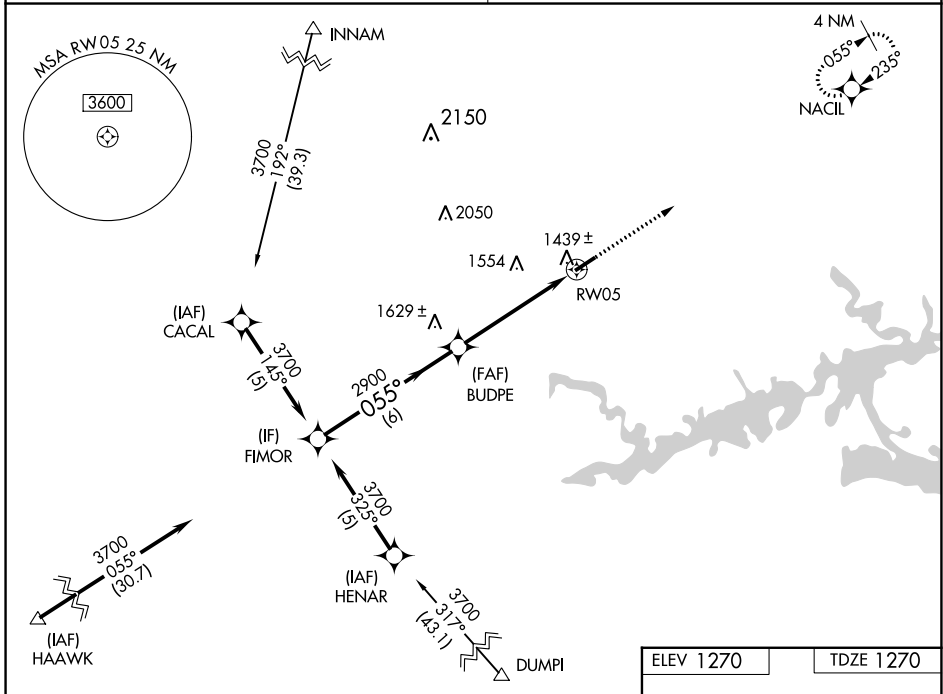
APP CRS	Rwy Idg	4397
055°	TDZE	1270
	Apt Elev	1270

RNAV (GPS) RWY 5

HOLLEY MOUNTAIN AIRPARK (2A2)

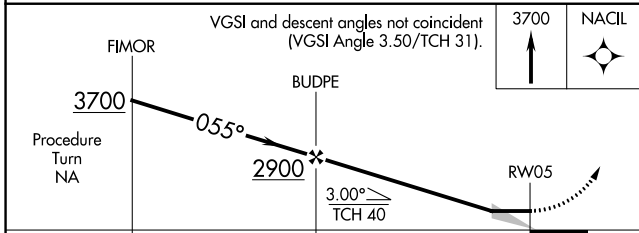
RNP APCH.		MISSED APPROACH: Climb to 3700 direct NACIL and hold.
<p>▼ Obtain local altimeter setting on CTAF; when not received, use Marion County Rgnl altimeter setting. Straight-in Rwy 5 NA at night, Circling Rwy 5 NA at night. Rwy 5 helicopter visibility reduction below 1 SM NA.</p> <p>▲ NA</p>		

MEMPHIS CENTER 126.85 281.55	UNICOM 122.7 (CTAF) 0
--	---------------------------------



SC-1, 07 SEP 2023 to 05 OCT 2023

SC-1, 07 SEP 2023 to 05 OCT 2023



ELEV 1270	TDZE 1270
-----------	-----------

CATEGORY	A	B	C	D
LNVA MDA	1760-1	490 (500-1)	1760-1 ³ / ₈ 490 (500-1 ³ / ₈)	NA
CIRCLING	1760-1 490 (500-1)	1780-1 510 (600-1)	1860-1 ¹ / ₂ 590 (600-1 ¹ / ₂)	NA
MARION COUNTY RGNL ALTIMETER SETTING MINIMUMS				
LNVA MDA	1920-1	650 (700-1)	1920-1 ³ / ₄ 650 (700-1 ³ / ₄)	NA
CIRCLING	1940-1 670 (700-1)	1960-1 690 (700-1)	2040-2 ¹ / ₄ 770 (800-2 ¹ / ₄)	NA

