

APP CRS <b>348°</b>	Rwy Idg TDZE Apt Elev	<b>6004</b> <b>360</b> <b>364</b>
------------------------	-----------------------------	---

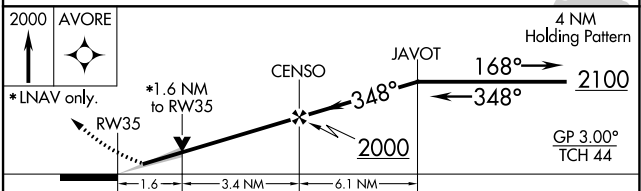
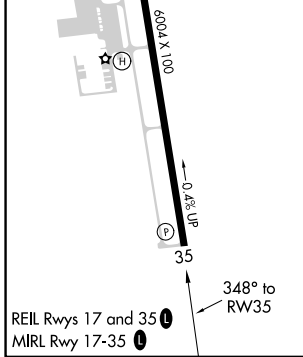
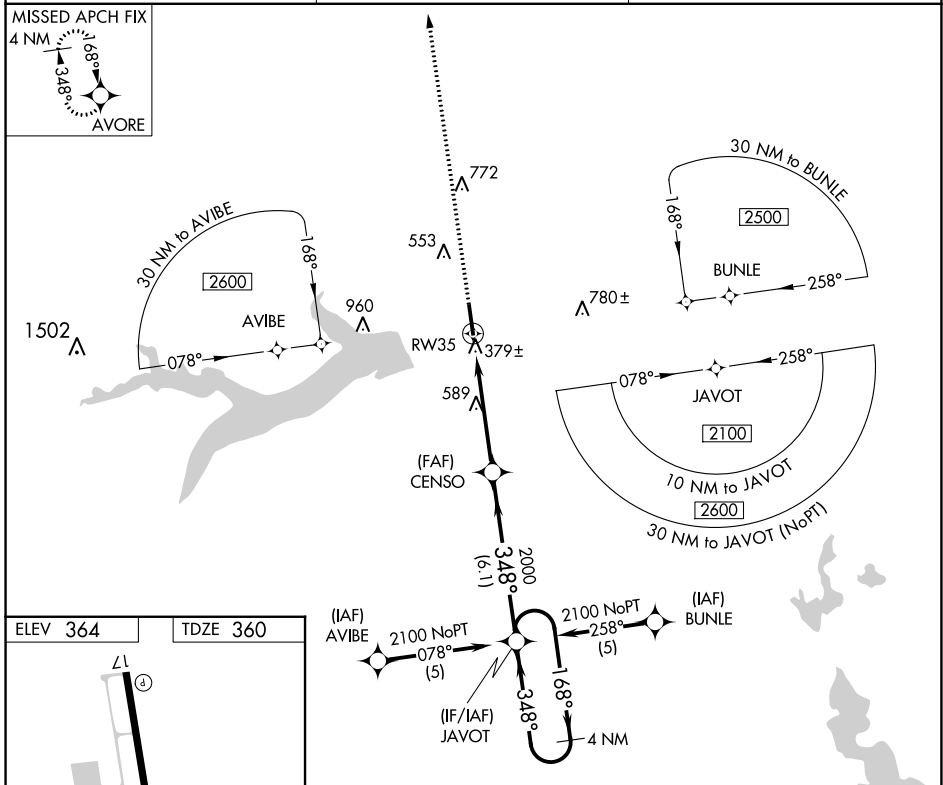
# RNAV (GPS) RWY 35

MOUNT PLEASANT RGNL (OSA)

**▼** For uncompensated Baro-VNAV systems, LNAV/VNAV NA below -15°C (5°F) or above 48°C (118°F). DME/DME RNP-0.3 NA. When local altimeter setting not received, use Paris altimeter setting and increase all DA/MDA 120 feet, increase LNAV/VNAV visibilities ½ mile all Cats, LNAV visibilities ¼ mile all Cats and circling visibilities ¼ mile all Cats. VDP and Baro-VNAV NA when using Paris altimeter setting.

**▲** MISSED APPROACH: Climb to 2000 direct AVORE and hold.

AWOS-3 <b>119.775</b>	FORT WORTH CENTER <b>132.025 360.75</b>	UNICOM <b>122.7 (CTAF)</b> <b>📻</b>
--------------------------	--	--



CATEGORY	A	B	C	D
LNAV/VNAV DA	700-1¼ 340 (400-1¼)			
LNAV MDA	900-1	540 (600-1)	900-1½ 540 (600-1½)	900-1¾ 540 (600-1¾)
CIRCLING	900-1	536 (600-1)	1040-2 676 (700-2)	1040-2½ 676 (700-2½)

SC-2, 07 SEP 2023 to 05 OCT 2023

SC-2, 07 SEP 2023 to 05 OCT 2023