

APP CRS	Rwy Idg	3214
121°	TDZE	64
	Apt Elev	64

RNAV (GPS) RWY 12

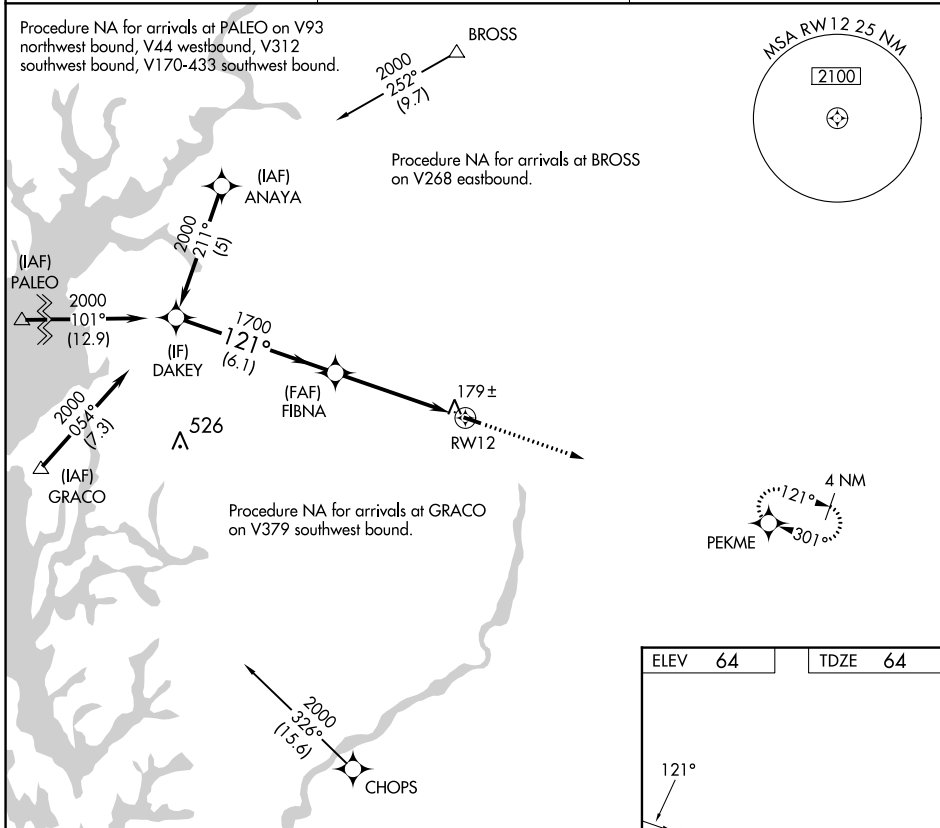
GOODEN AIRPARK (RJD)

RNP APCH - GPS.

▼ Procedure NA at night. Use Easton altimeter setting: when not received, procedure NA. Rwy 12 helicopter visibility reduction below 1 SM NA.

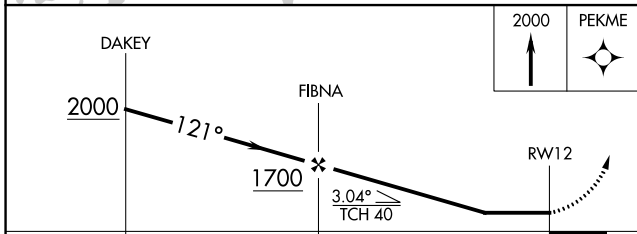
MISSED APPROACH: Climb to 2000 direct PEKME and hold.

ESN AWOS-3PT 124.475	POTOMAC APP CON 124.55 317.425	UNICOM 122.8 (CTAF) 0
--------------------------------	--	---------------------------------



NE-3, 07 SEP 2023 to 05 OCT 2023

NE-3, 07 SEP 2023 to 05 OCT 2023



ELEV 64	TDZE 64
---------	---------

121°

3214 X 50

30

LIRL Rwy 12-30 0

REIL Rws 12 and 30 0

CATEGORY	A	B	C	D
LNAV MDA	480-1	416 (500-1)		NA
CIRCLING	520-1	456 (500-1)		NA