

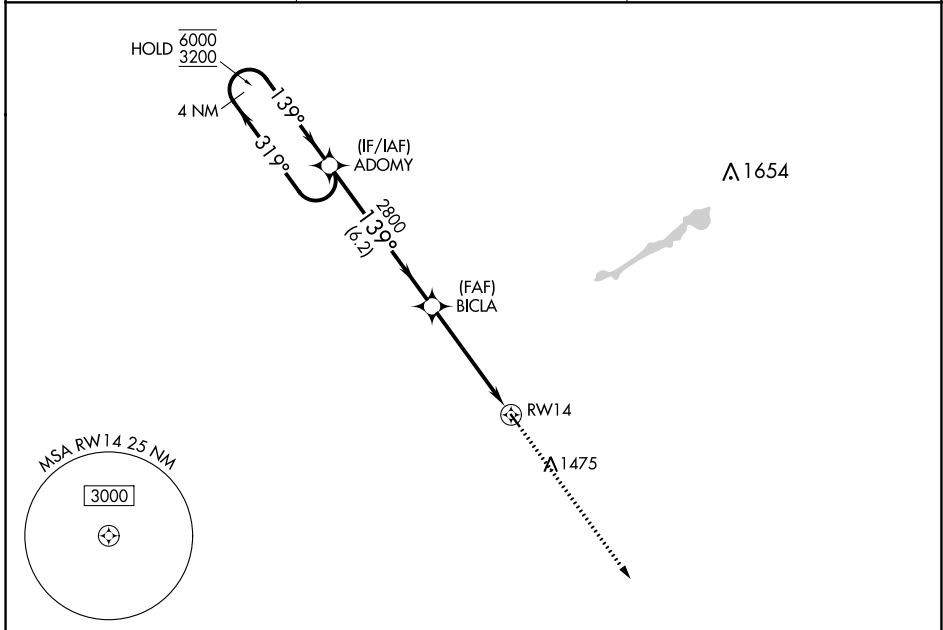
APP CRS	Rwy Idg	<b>3000</b>
<b>139°</b>	TDZE	<b>1137</b>
	Apt Elev	<b>1137</b>

# RNAV (GPS) RWY 14

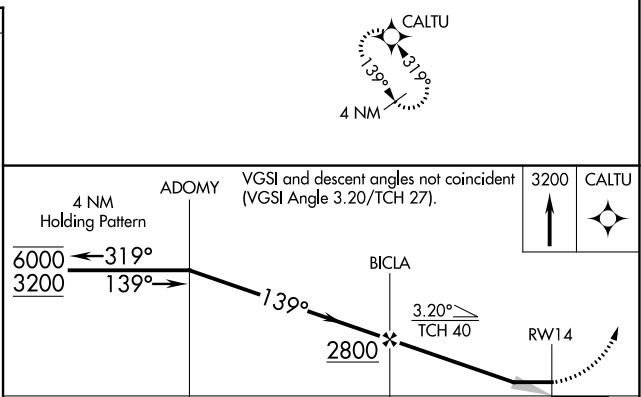
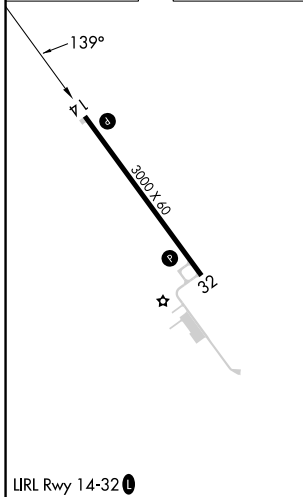
FERTILE MUNI (D14)

RNP APCH - GPS.	MISSED APPROACH: Climb to 3200 direct CALTU and hold.
Use Mahanomen altimeter setting.	

3N8 AWOS-3PT <b>121.125</b>	GRAND FORKS APP CON* <b>118.1 318.1</b>	UNICOM <b>122.8 (CTAF) 0</b>
--------------------------------	--	---------------------------------



ELEV 1137	TDZE 1137
-----------	-----------



ADOMY	VGSi and descent angles not coincident (VGSi Angle 3.20/TCH 27).			3200	CALTU
4 NM Holding Pattern	6000	3200	2800	6.2 NM	4.8 NM
CATEGORY	A	B	C	D	
LNAV MDA	1600-1	463 (500-1)	NA		
CIRCLING	1660-1 523 (600-1)	1760-1 623 (700-1)	NA		

NC-1, 07 SEP 2023 to 05 OCT 2023

NC-1, 07 SEP 2023 to 05 OCT 2023