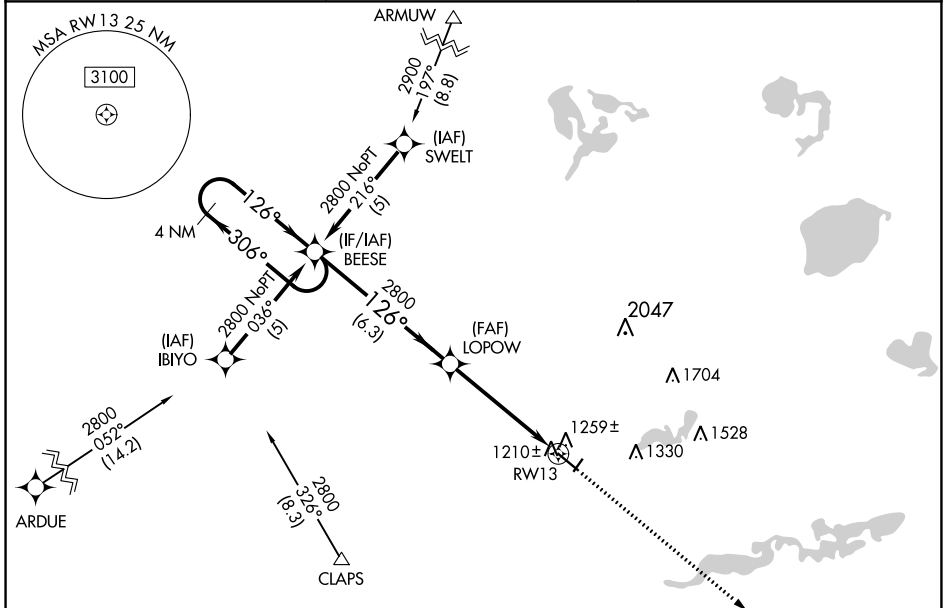


WAAS CH <b>93902</b> <b>W13A</b>	APP CRS <b>126°</b>	Rwy Idg TDZE Apt Elev	<b>5500</b> <b>1124</b> <b>1126</b>
--	------------------------	-----------------------------	---

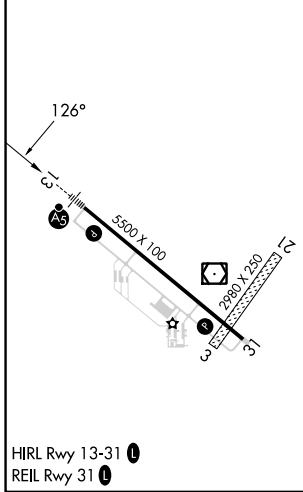
# RNAV (GPS) RWY 13

WILLMAR MUNI/JOHN L RICE FLD (BDH)

RNP APCH. ⚠ When local altimeter setting not received, use Olivia Rgnl altimeter setting: increase LPV DA to 1442 feet, LNAV/VNAV DA to 1535 feet, and all MDAs 60 feet, and increase Circling Cat D visibility ¼ SM. For uncompensated Baro-VNAV systems, LNAV/VNAV NA below -17°C or above 46°C. Baro-VNAV and VDP NA when using Olivia Rgnl altimeter setting. Circling Rwy 3, 21 NA.	MALSR 	MISSED APPROACH: Climb to 2800 direct HEPIV and hold.
AWOS-3 <b>113.7</b>	MINNEAPOLIS CENTER <b>125.5 323.1</b>	UNICOM <b>122.8 (CTAF)</b>



ELEV 1126	TDZE 1124
-----------	-----------



4 NM Holding Pattern		BEESE	LOPOW	2800	HEPIV
2800		← 306°	→ 126°	→ 126°	↑ 2800
GP 3.00°		6.3 NM		*1.4 NM to RWY13	
TCH 52		3.6 NM		*LNAV only	
		1.4 NM		RWY13	
CATEGORY	A	B	C	D	
LPV DA	1387-1		263 (300-1)		
LNAV/VNAV DA	1480-1¼		356 (400-1¼)		
LNAV MDA	1620-1	496 (500-1)	1620-1¼	1620-1½	496 (500-1½)
CIRCLING	1620-1	494 (500-1)	1660-1½	1960-2¾	834 (900-2¾)

NC-1, 07 SEP 2023 to 05 OCT 2023

NC-1, 07 SEP 2023 to 05 OCT 2023