

|  |                        |   |
|--|------------------------|---|
| WAAS<br>CH <b>49004</b><br><b>W18A</b> | APP CRS<br><b>175°</b> | Rwy Idg <b>6610</b><br>TDZE <b>166</b><br>Apt Elev <b>166</b> |
|--|------------------------|---|

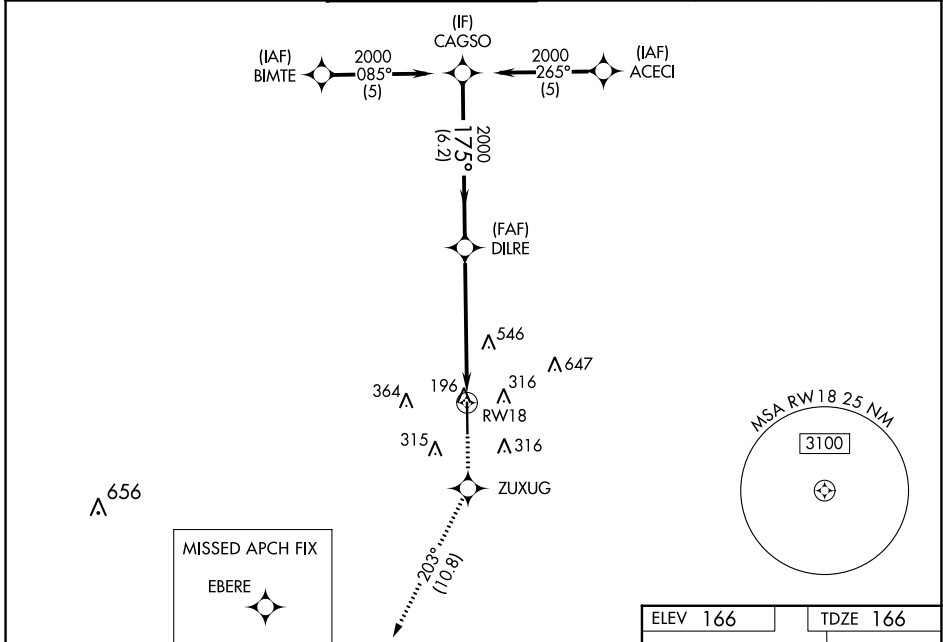
# RNAV (GPS) RWY 18

HOUSTON EXEC (TME)

**⚠** Baro-VNAV NA when using David Wayne Hooks Mem'l altimeter setting. For uncompensated Baro-VNAV systems, LNAV/VNAV NA below -15°C (5°F) or above 48°C (118°F). DME/DME RNP-0.3 NA. VDP NA when using David Wayne Hooks Mem'l altimeter setting. Helicopter visibility reduction below ¼ SM NA. When local altimeter setting not received, use David Wayne Hooks Mem'l altimeter setting and increase all DA 57 feet and all MDA 60 feet; increase LNAV/VNAV all Cats and LNAV Cat C/D visibility ½ mile, and Circling Cat C/D visibility ¼ mile.

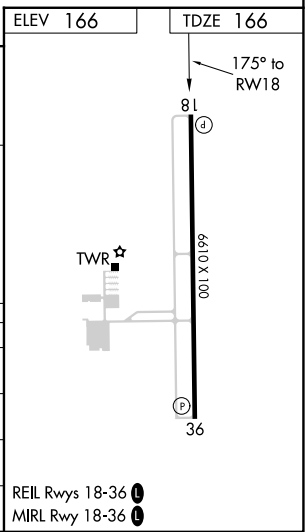
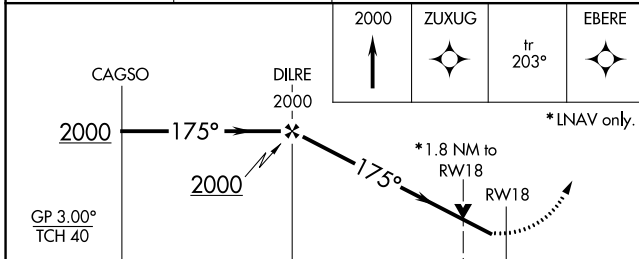
**MISSED APPROACH:** Climb to 2000 direct ZUXUG and on track 203° to EBERE and hold.

|                        |                                       |   |                           |                            |                          |
|------------------------|---------------------------------------|---|---------------------------|----------------------------|--------------------------|
| ATIS<br><b>119.525</b> | HOUSTON APP CON<br><b>123.8 257.7</b> | EXECUTIVE TOWER ★<br><b>126.975</b> (CTAF) <b>0</b> | GND CON<br><b>132.075</b> | CLNC DEL<br><b>132.075</b> | UNICOM<br><b>122.975</b> |
|------------------------|---------------------------------------|---|---------------------------|----------------------------|--------------------------|



SC-5, 07 SEP 2023 to 05 OCT 2023

SC-5, 07 SEP 2023 to 05 OCT 2023



| CATEGORY     | A                 | B                   | C                    | D |
|--------------|-------------------|---------------------|----------------------|---|
| LPV DA       | 416-1 250 (300-1) |                     |                      |   |
| LNAV/VNAV DA | 708-2 542 (600-2) |                     |                      |   |
| LNAV MDA     | 780-1 614 (700-1) | 780-1¾ 614 (700-1¾) |                      |   |
| CIRCLING     | 820-1 654 (700-1) | 860-2 694 (700-2)   | 1000-2¾ 834 (900-2¾) |   |

REIL Rwy 18-36 **0**  
MIRL Rwy 18-36 **0**