

(STYCK8.STYCK) 21280

AL-10328 (FAA)

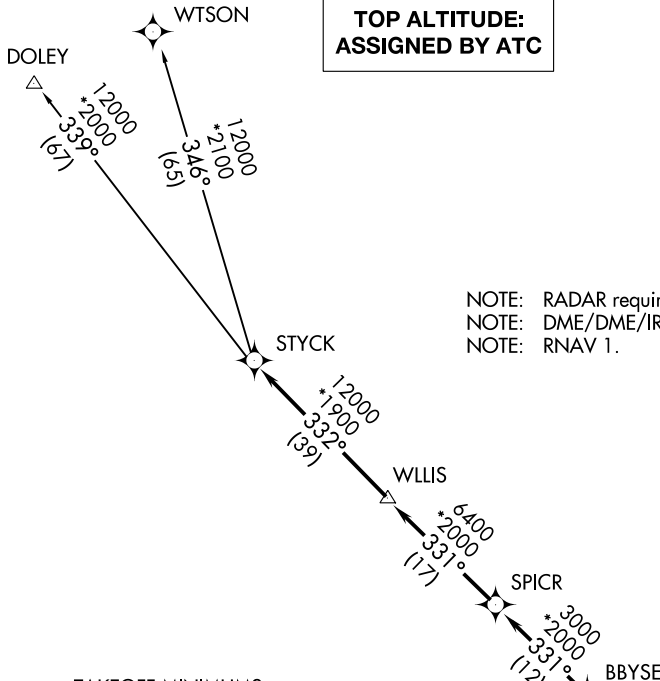
HOUSTON EXEC (TME)

# STYCK EIGHT DEPARTURE (RNAV)

HOUSTON, TEXAS

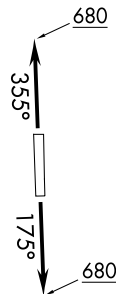
**TOP ALTITUDE:  
ASSIGNED BY ATC**

ATIS  
 119.525  
 CLNC DEL  
 132.075  
 GND CON  
 132.075  
 EXECUTIVE TOWER ★  
 126.975 (CTAF)  
 HOUSTON DEP CON  
 123.8 257.7



NOTE: RADAR required.  
 NOTE: DME/DME/IRU or GPS required.  
 NOTE: RNAV 1.

**TAKEOFF MINIMUMS**  
 Rwy 18, 36: Standard with minimum  
 climb of 500' per NM to 680.



NOTE: Chart not to scale.

## DEPARTURE ROUTE DESCRIPTION

**TAKEOFF RUNWAY 18:** Climb on heading 175° to 680 for RADAR vectors to BBYSE, thence. . .

**TAKEOFF RUNWAY 36:** Climb on heading 355° to 680 for RADAR vectors to BBYSE, thence. . .

. . . on track 331° to SPICR, then on track 331° to WLLIS, then on track 332° to STYCK, then on (transition). Maintain ATC assigned altitude. Expect filed altitude 10 minutes after departure.

DOLEY TRANSITION (STYCK8.DOLEY)

WTSON TRANSITION (STYCK8.WTSON)

# STYCK EIGHT DEPARTURE (RNAV)

(STYCK8.STYCK) 07OCT21

HOUSTON, TEXAS

HOUSTON EXEC (TME)

SC-5, 07 SEP 2023 to 05 OCT 2023

SC-5, 07 SEP 2023 to 05 OCT 2023