

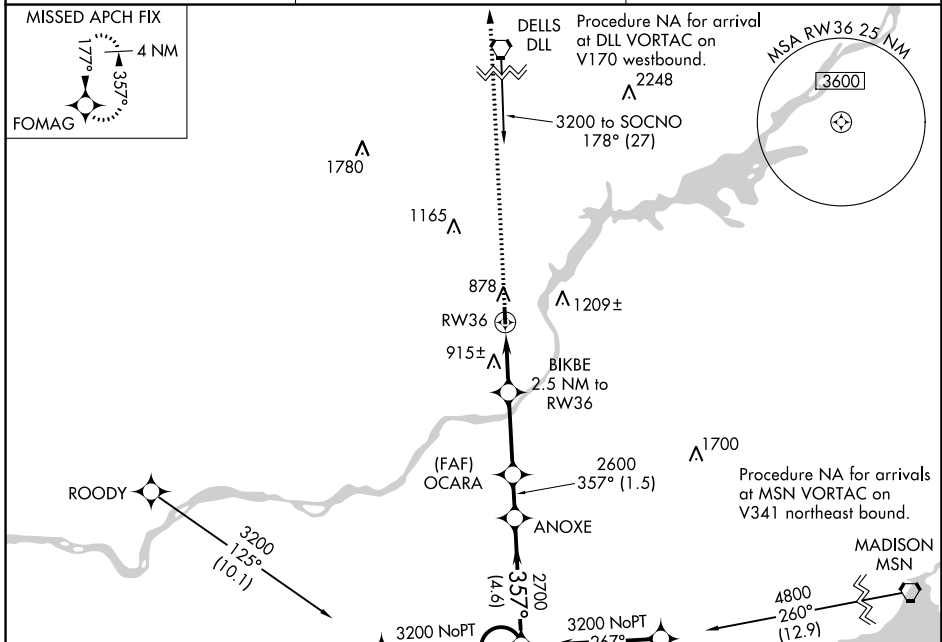
APP CRS	Rwy Idg	2936
357°	TDZE	832
	Apt Elev	832

RNAV (GPS) RWY 36

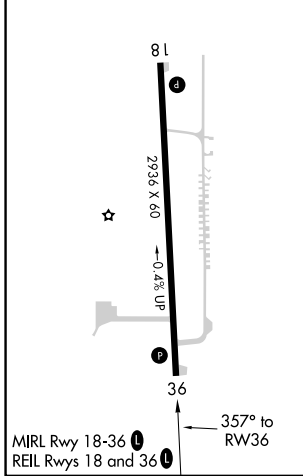
SAUK/PRAIRIE (91C)

RNP APCH	<p>▼ Rwy 36 helicopter visibility reduction below 3/4 SM NA. ▲ NA Use Madison altimeter setting.</p>	MISSED APPROACH: Climb to 3000 direct FOMAG and hold.
----------	---	---

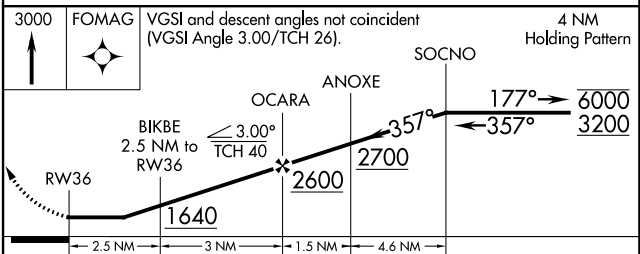
MSN ASOS 124.65 278.3	MADISON APP CON ★ 135.45 343.7	CTAF 122.9 0
---------------------------------	--	------------------------



ELEV 832	TDZE 832
----------	----------



3000	FOMAG	VGSI and descent angles not coincident (VGSI Angle 3.00/TCH 26).	4 NM Holding Pattern
------	-------	--	----------------------



CATEGORY	A	B	C	D
LNAV MDA	1240-1	408 (500-1)	NA	
C CIRCLING	1400-1 568 (600-1)	1460-1 628 (700-1)	NA	

EC-3, 07 SEP 2023 to 05 OCT 2023

EC-3, 07 SEP 2023 to 05 OCT 2023