

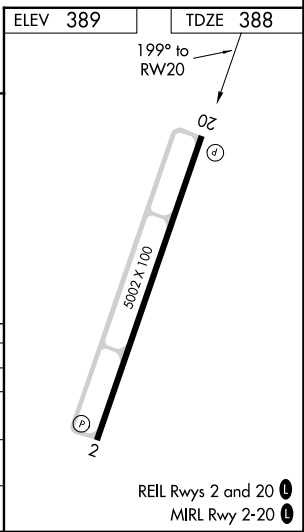
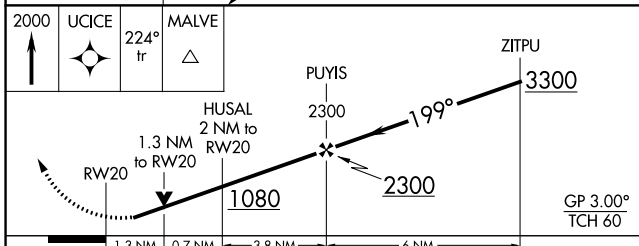
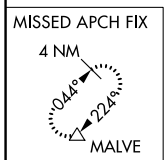
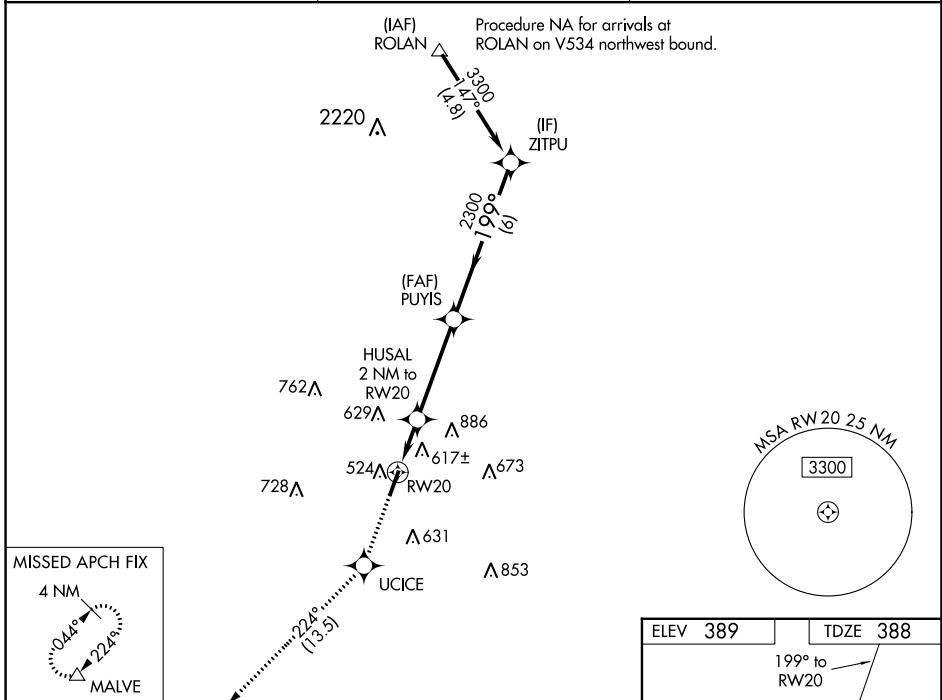
WAAS CH 40309 W20A	APP CRS 199°	Rwy Idg TDZE Apt Elev	5002 388 389
--	------------------------	-----------------------------	---

RNAV (GPS) RWY 20

SALINE COUNTY RGNL (SUZ)

RNP APCH - GPS.		MISSED APPROACH: Climb to 2000 direct UCICE and track 224° to MALVE and hold.
▽	Rwy 20 helicopter visibility reduction below 3/4 SM NA.	
▲	For uncompensated Baro-VNAV systems, LNAV/VNAV NA below -15°C or above 54°C.	

AWOS-3 132.125	LITTLE ROCK APP CON 119.5 306.2	UNICOM 122.8 (CTAF)
--------------------------	---	-------------------------------



CATEGORY	A	B	C	D
LPV DA		639-3/4	251 (300-3/4)	
LNAV/VNAV DA		789-1 1/8	401 (400-1 1/8)	
LNAV MDA	880-1	492 (500-1)	880-1 3/8	492 (500-1 3/8)
C CIRCLING	940-1 551 (600-1)	1080-1 691 (700-1)	1200-2 1/2 811 (900-2 1/2)	1200-2 3/4 811 (900-2 3/4)

SC-1, 07 SEP 2023 to 05 OCT 2023

SC-1, 07 SEP 2023 to 05 OCT 2023