

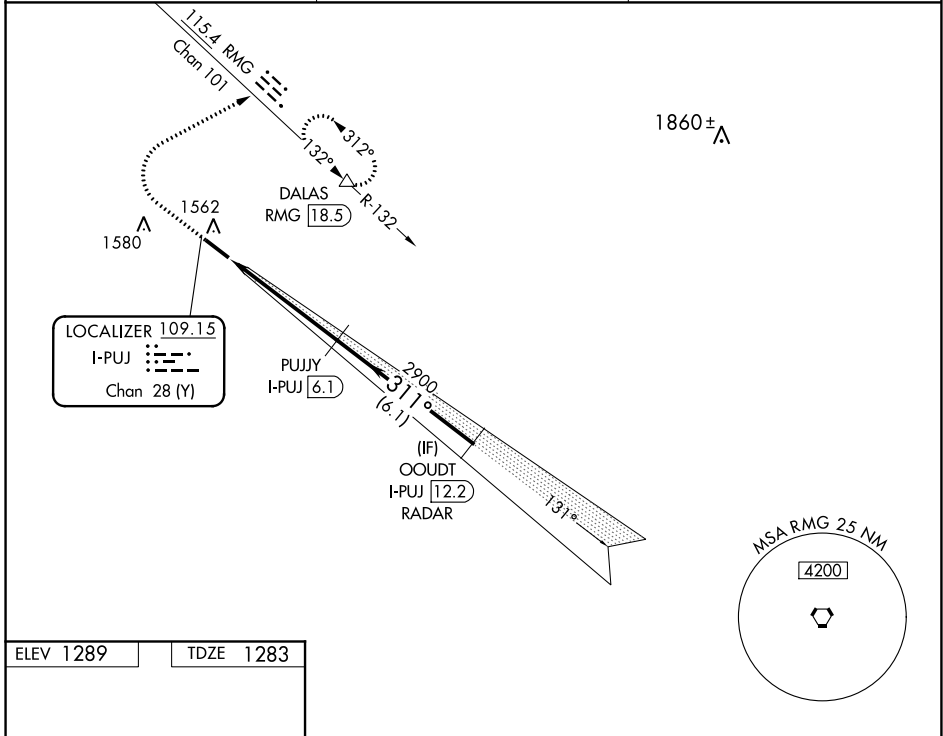
LOC/DME I-PUJ <b>109.15</b> Chan <b>28</b> (Y)	APP CRS <b>311°</b>	Rwy Idg TDZE Apt Elev	<b>5505</b> <b>1283</b> <b>1289</b>
--	------------------------	-----------------------------	---

**ILS or LOC RWY 31**  
PAULDING NORTHWEST ATLANTA (PUJ)

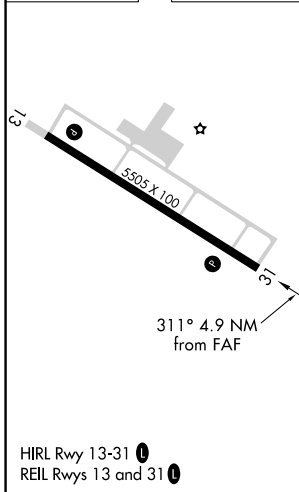
DME required. RADAR required for procedure entry.  
Autopilot coupled approach NA below 1680.

MISSED APPROACH: Climb to 3000 then climbing right turn to 3600 on heading 066° and RMG VORTAC R-132 to DALAS INT/RMG 18.5 DME and hold.

AWOS-3 <b>126.225</b>	ATLANTA APP CON <b>121.0 268.7</b>	UNICOM <b>123.075</b> (CTAF) <b>0</b>
--------------------------	---------------------------------------	--



ELEV 1289	TDZE 1283
-----------	-----------



3000 ↑	3600 hdg 066°	RMG R-132	DALAS △	PUJYY I-PUJ 6.1	OODT I-PUJ 12.2 RADAR
*LOC only.					
I-PUJ 1.2	*I-PUJ 2.3	2900	311°	3000	GS 3.00° TCH 48
← 1.1 NM		← 3.8 NM		← 6.1 NM	
CATEGORY	A	B	C	D	
S-ILS 31	1483- <sup>3</sup> / <sub>4</sub> 200 (200- <sup>3</sup> / <sub>4</sub> )				
S-LOC 31	1680-1	397 (400-1)	1680-1 <sup>1</sup> / <sub>8</sub>	397 (400-1 <sup>1</sup> / <sub>8</sub> )	
<input checked="" type="checkbox"/> CIRCLING	1880-1	591 (600-1)	1940-1 <sup>3</sup> / <sub>4</sub> 651 (700-1 <sup>3</sup> / <sub>4</sub> )	1940-2 651 (700-2)	

SE-4, 07 SEP 2023 to 05 OCT 2023

SE-4, 07 SEP 2023 to 05 OCT 2023