

WAAS CH <b>72914</b> <b>W01A</b>	APP CRS <b>008°</b>	Rwy ldg <b>3700</b> TDZE <b>1774</b> Apt Elev <b>1774</b>
--	------------------------	---

# RNAV (GPS) RWY 1

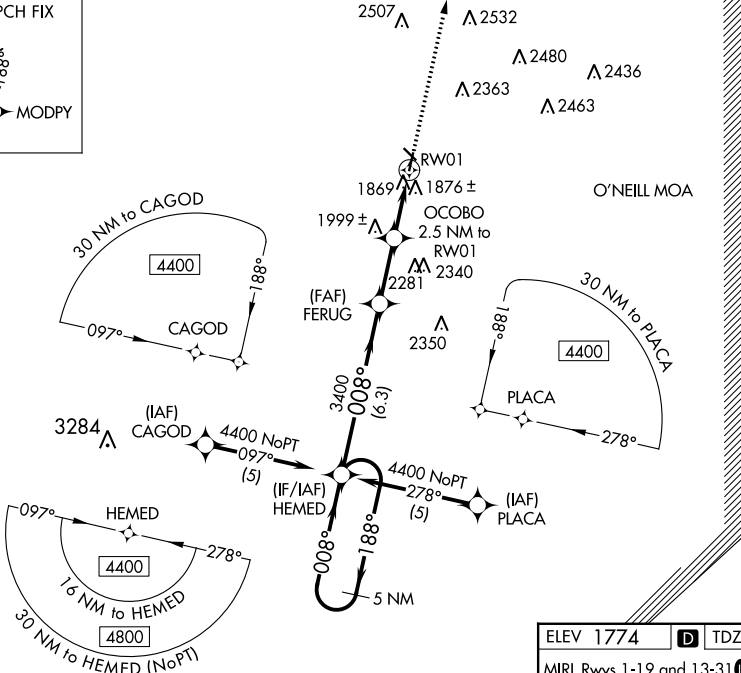
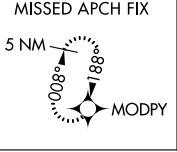
ANTELOPE COUNTY (4V9)

**Baro-VNAV NA. DME/DME RNP-0.3 NA. Use Albion altimeter setting; when not received, use Norfolk altimeter setting and increase all DA/MDA 40 feet and LNAV/VNAV all Cats visibility ¼ mile.**

**MISSED APPROACH:** Climb to 4400 direct MODPY and hold.

MINNEAPOLIS CENTER  
**128.0 257.95**

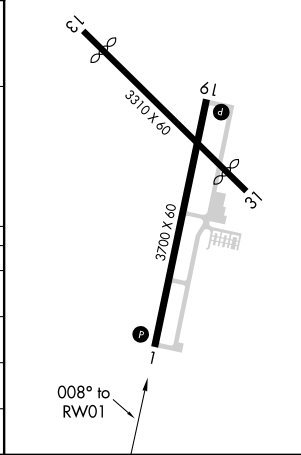
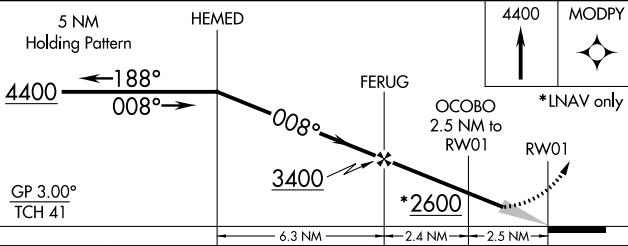
UNICOM  
**122.8 (CTAF) 0**



NC-2, 07 SEP 2023 to 05 OCT 2023

NC-2, 07 SEP 2023 to 05 OCT 2023

ELEV 1774 **D** TDZE 1774  
MIRL Rwy 1-19 and 13-31 **0**



CATEGORY	A	B	C	D
LPV DA	2181-1½	407 (500-1½)		NA
LNAV/VNAV DA	2197-1½	423 (500-1½)		NA
LNAV MDA	2320-1	546 (600-1)		NA
<b>C</b> CIRCLING	2360-1 586 (600-1)	2440-1 666 (700-1)		NA