

APP CRS <b>360°</b>	Rwy Idg TDZE Apt Elev	<b>N/A</b> <b>N/A</b> <b>489</b>
------------------------	-----------------------------	--

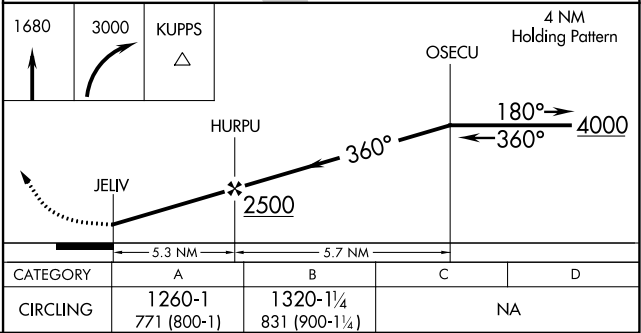
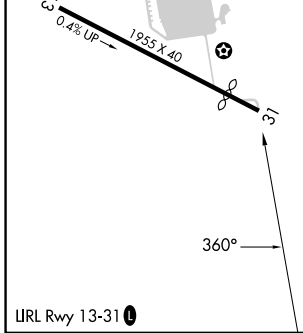
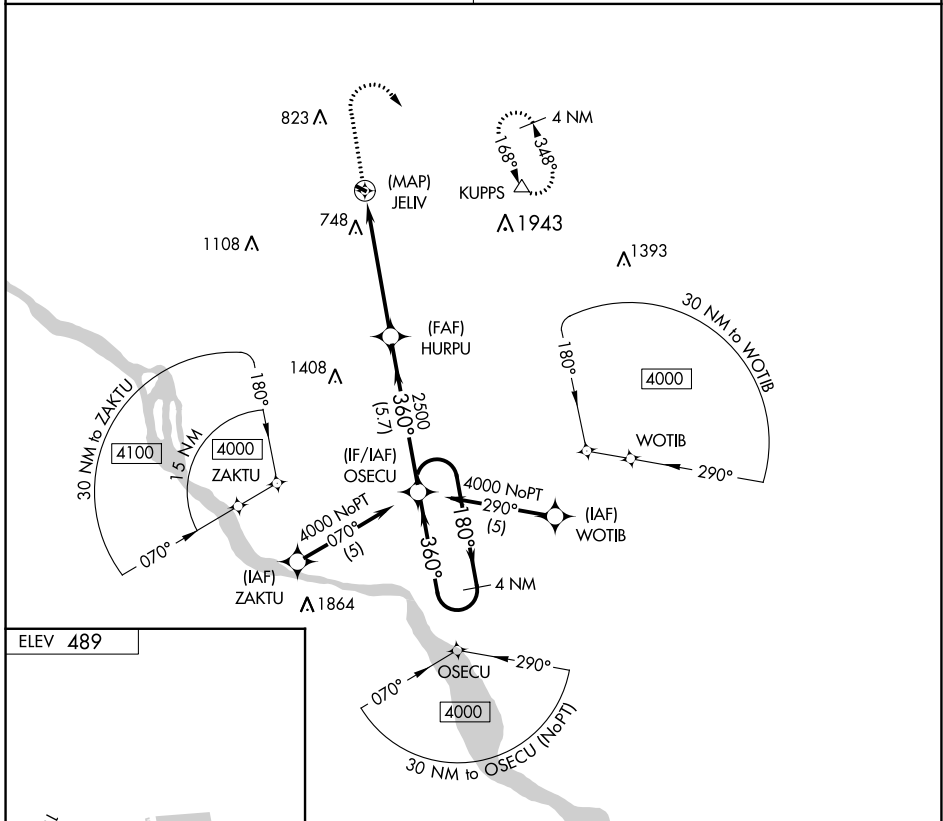
# RNAV (GPS)-A

REIGLE FLD (58N)

**NA** Procedure NA at night. DME/DME RNP-0.3 NA. Visibility reduction by helicopters NA. Use Harrisburg Intl altimeter setting, when not received, use Fort Indiantown Gap altimeter setting.

**MISSED APPROACH:** Climb to 1680 then climbing right turn to 3000 direct KUPPS and hold.

HARRISBURG APP CON <b>118.25</b> <b>269.45</b> (001°-079°) <b>126.45</b> <b>281.525</b> (080°-210°) <b>124.1</b> <b>273.525</b> (211°-360°)		UNICOM <b>122.8</b> (CTAF) <b>0</b>
--	--	--



CATEGORY	A	B	C	D
CIRCLING	1260-1 771 (800-1)	1320-1¼ 831 (900-1¼)	NA	

NE-4, 07 SEP 2023 to 05 OCT 2023

NE-4, 07 SEP 2023 to 05 OCT 2023