

WAAS CH 53340 W23A	APP CRS 227°	Rwy Idg TDZE Apt Elev	6370 4892 4892
--	------------------------	-----------------------------	---

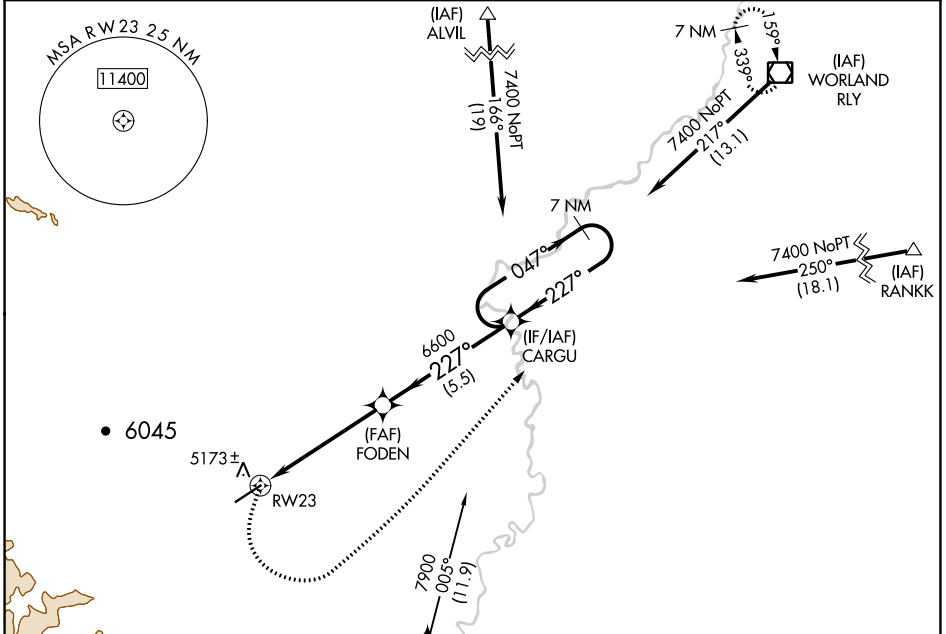
RNAV (GPS) RWY 23

HOT SPRINGS COUNTY (HSG)

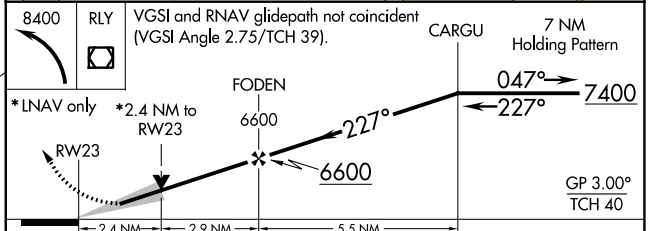
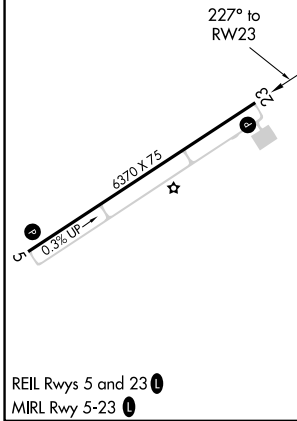
⚠ For uncompensated Baro-VNAV systems, LNAV/VNAV NA below -24°C (-11°F) or above 54°C (130°F). Circling NA northwest of Rwy 5-23. DME/DME RNP-0.3 NA.

⚠ MISSED APPROACH: Climbing left turn to 8400 direct RLY VOR/DME and hold.

AWOS-3PT 121.125	SALT LAKE CENTER 133.25 285.6	UNICOM 122.8 (CTAF) 📻
----------------------------	---	--



ELEV 4892	TDZE 4892
-----------	-----------



CATEGORY	A	B	C	D
LPV DA		5382-1¾	490 (500-1¾)	
LNAV/VNAV DA		5577-2½	685 (700-2½)	
LNAV MDA	5620-1	728 (800-1)	5620-2	728 (800-2)
C CIRCLING	5620-1	728 (800-1)	5620-2	5880-3 988 (1000-3)

NW-1, 07 SEP 2023 to 05 OCT 2023

NW-1, 07 SEP 2023 to 05 OCT 2023