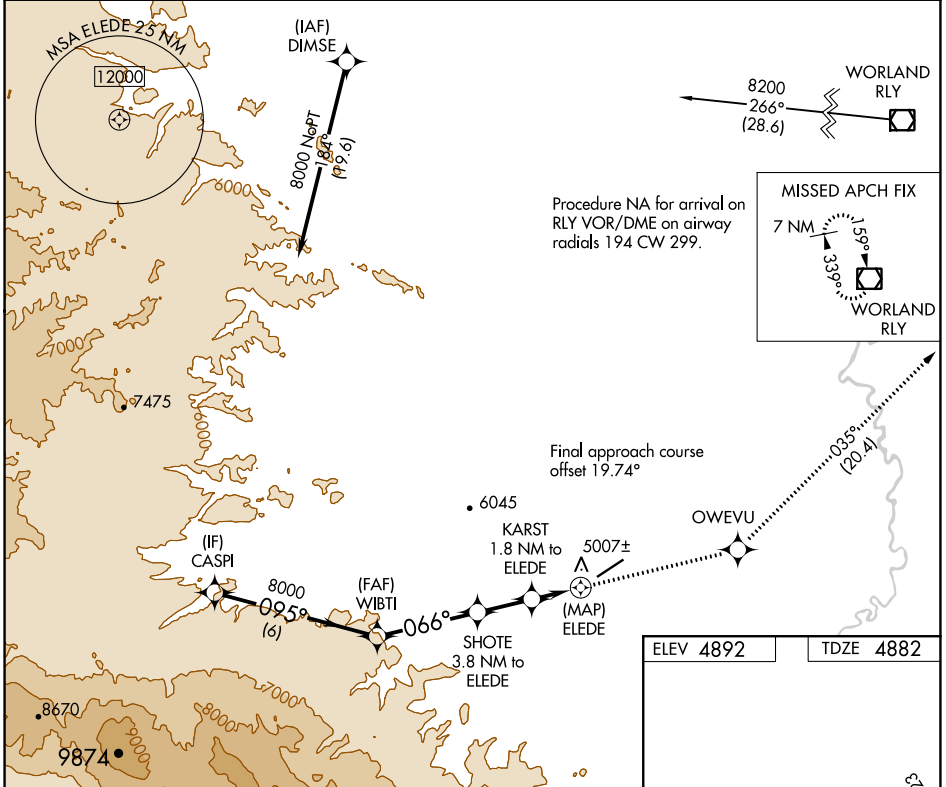


APP CRS	Rwy Idg	6370
066°	TDZE	4882
	Apt Elev	4892

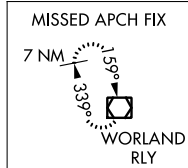
RNAV (GPS) RWY 5

HOT SPRINGS COUNTY (HSG)

<p>⚠ Circling NA northwest of Rwy 5-23. ⚠ DME/DME RNP-0.3 NA. Rwy 5 helicopter visibility reduction below 3/4 SM NA.</p>	<p>MISSED APPROACH: Climb to 8200 direct OWEVU and on track 035° to RLY VOR/DME and hold.</p>	
<p>AWOS-3PT 121.125</p>	<p>SALT LAKE CENTER 133.25 285.6</p>	<p>UNICOM 122.8 (CTAF) 0</p>

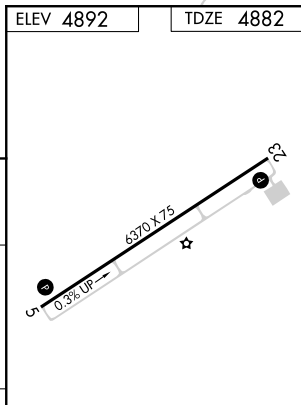
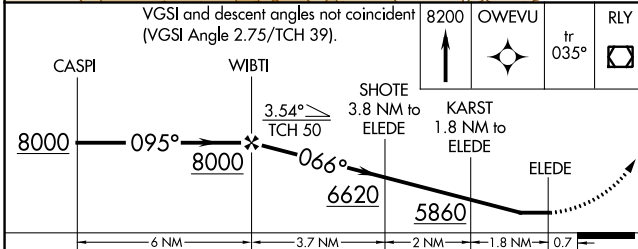


Procedure NA for arrival on RLY VOR/DME on airway radials 194 CW 299.



Final approach course offset 19.74°

ELEV 4892	TDZE 4882
-----------	-----------



CATEGORY	A	B	C	D
LNVA MDA	5240-1 358 (400-1)			NA
C CIRCLING	5320-1 428 (500-1)	5540-1 648 (700-1)	5580-2 688 (700-2)	5880-3 988 (1000-2)

REIL Rwys 5 and 23 **0**
 MIRL Rwy 5-23 **0**

NW-1, 07 SEP 2023 to 05 OCT 2023

NW-1, 07 SEP 2023 to 05 OCT 2023