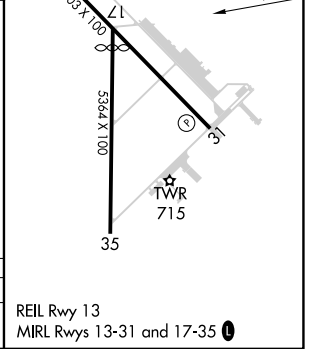
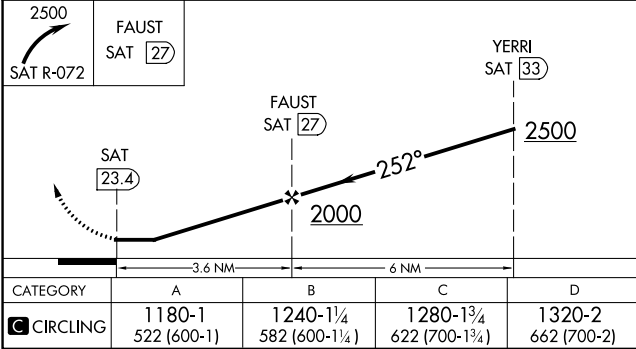
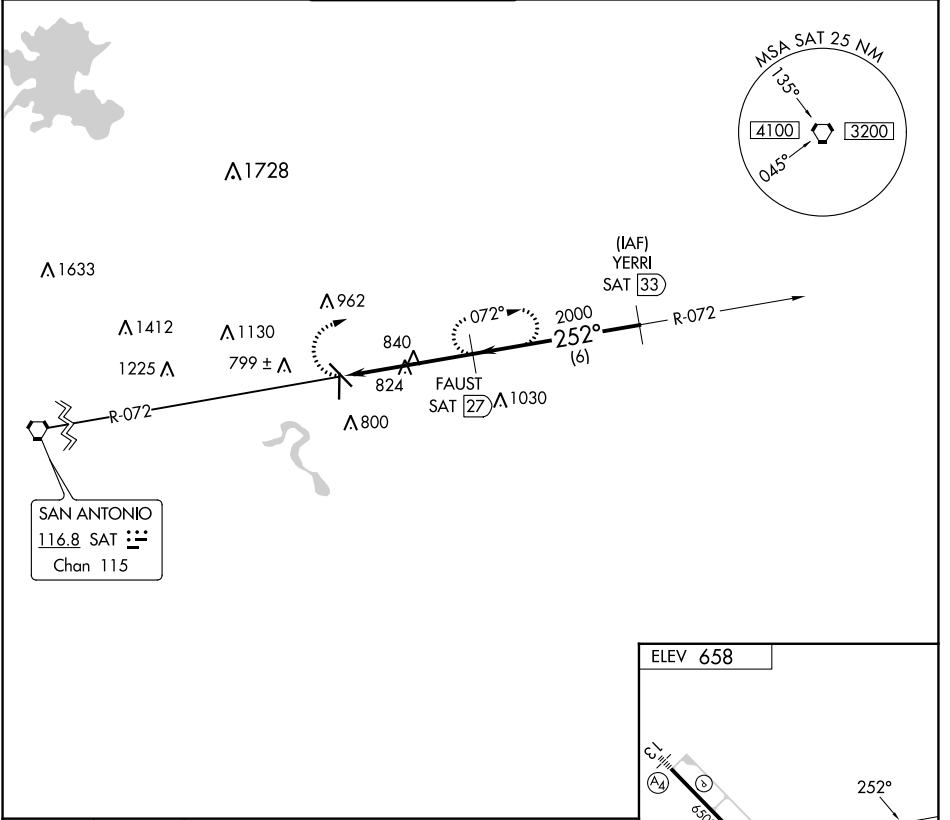


VORTAC SAT <b>116.8</b> Chan <b>115</b>	APP CRS <b>252°</b>	Rwy Idg TDZE Apt Elev <b>N/A</b> <b>N/A</b> <b>658</b>
---	------------------------	---

**VOR/DME-A**  
NEW BRAUNFELS NTL (BAZ)

RADAR required for procedure entry.		MISSED APPROACH: Climbing right turn to 2500 on SAT R-072 to FAUST/27 DME and hold.		
-------------------------------------	--	---	--	--

ATIS <b>119.325</b>	SAN ANTONIO APP CON <b>124.45 335.625</b>	NEW BRAUNFELS TOWER* <b>127.05 (CTAF) 285.4</b>	GND CON <b>120.175</b>	CLNC DEL <b>134.75</b>	CLNC DEL <b>134.75</b> (When twr closed)	UNICOM <b>122.7</b>
------------------------	--	--	---------------------------	---------------------------	--	------------------------



SC-3, 05 OCT 2023 to 02 NOV 2023

SC-3, 05 OCT 2023 to 02 NOV 2023