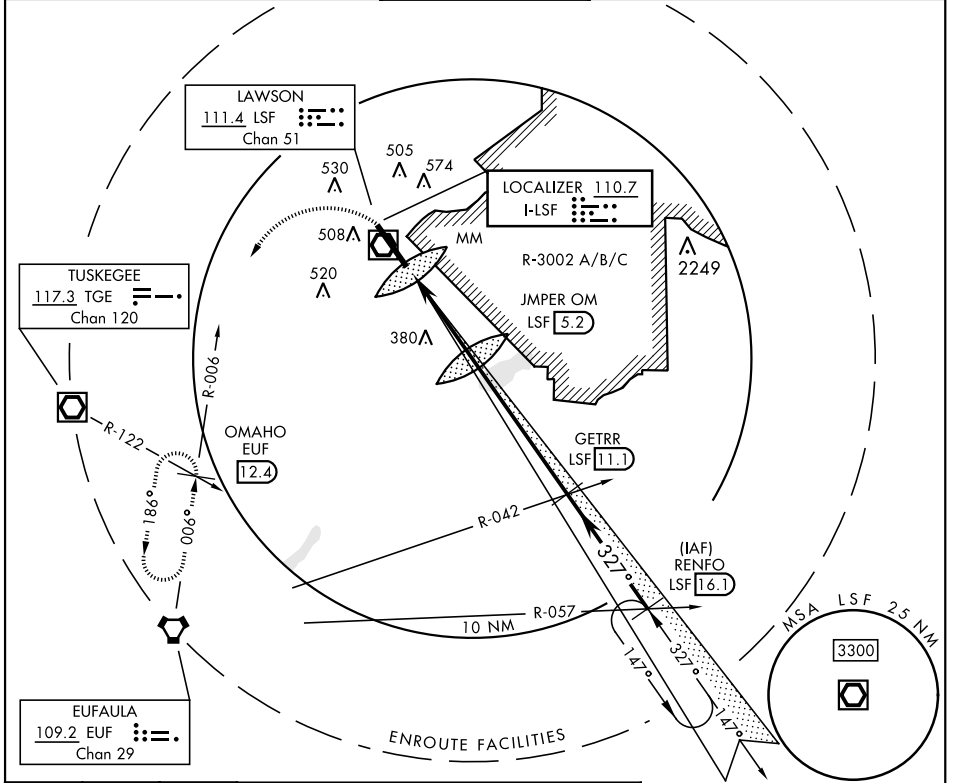
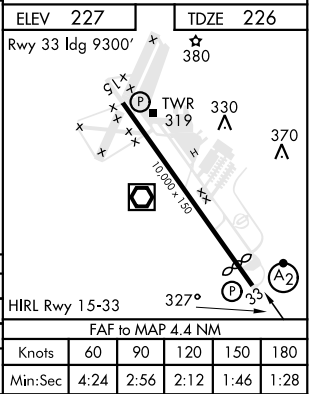


# ILS or LOC RWY 33

LOC I-LSF <b>110.7</b>	APCH CRS <b>327°</b>	Rwy Ldg TDZE Arpt Elev <b>9300</b> <b>226</b> <b>227</b>	AL-146 [USA]	LAWSON AAF (KLSF)
▼ * Circling not authorized E of Rwy 15-33. NA when tower closed.			SALSF 	MISSED APPROACH: Climb to 1000 then climbing left turn to 2400 via EUF R-006 to OMAHO INT/EUF 12.4 DME and hold.
ATIS ★ <b>134.375</b>	ATLANTA APP CON <b>125.5 323.1</b>	TOWER <b>119.05</b> (CTAF) <b>269.525</b>	GND CON <b>121.7 254.25</b>	CLNC DEL <b>121.7 251.15</b>



1000	2400	OMAHO EUF 12.4	JMPER OM 1454	GETRR 11.1	RENFO 16.1
↑	EUF R-006			EUF R-042	EUF R-057
		MM 2.1	327°	3000	
		0.9	1700	GS 3.00°	TCH 54
		0.5	3.8 NM		
CATEGORY	A	B	C	D	
S-ILS 33	426/24	200 (200-½)	426/40	200 (200-¾)	
S-LOC 33	640/40	414 (500-¾)	640/50	414 (500-1)	
CIRCLING *	820-1	593 (600-1)	840-1 ¾	880-2	
			613 (700-1 ¾)	653 (700-2)	



# ILS or LOC RWY 33

SE-4, 02 NOV 2023 to 30 NOV 2023

SE-4, 02 NOV 2023 to 30 NOV 2023

FAF to MAP 4.4 NM					
Knots	60	90	120	150	180
Min:Sec	4:24	2:56	2:12	1:46	1:28