

RNAV (GPS) RWY 15

APCH CRS	Rwy Idg	10,000
147°	TDZE	226
	Arprt Elev	227

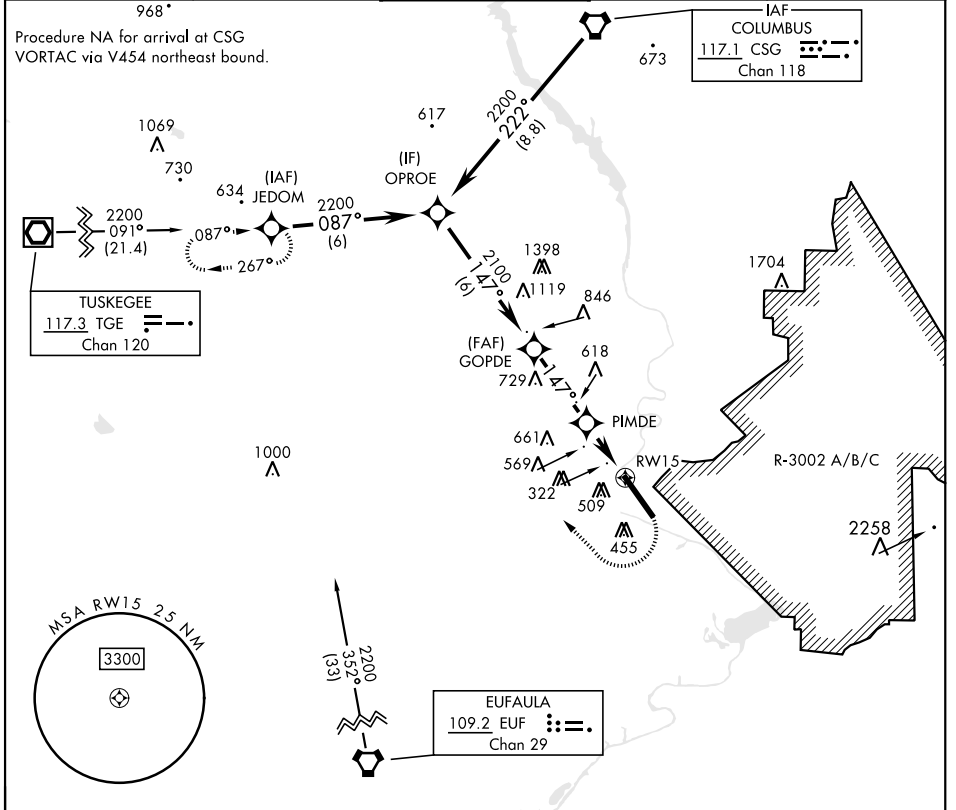
AL-146 [USA]

LAWSON AAF (KLSF)

RNP APCH

MISSED APPROACH: Climbing right turn to 2200 direct JEDOM and hold.

ATIS ★ 134.375	ATLANTA APP CON 125.5 323.1	TOWER 119.05 (CTAF) 269.525	GND CON 121.7 254.25	CLNC DEL 121.7 251.15
--------------------------	---------------------------------------	--	--------------------------------	---------------------------------



VGSI and descent angles not coincident.

OPROE

2200

147°

GOPDE

2100

1.7 NM to RWY 15

PIMDE

RWY 15

1040

3.3 NM

2.4 NM

3.05° TCH 45

CATEGORY	A	B	C	D
RNAV MDA	820/50	594 (600-1)	820-1½ 594 (600-1½)	820-1¾ 594 (600-1¾)
CIRCLING *	820-1	593 (600-1)	840-1¾ 613 (700-1¾)	880-2 653 (700-2)

ELEV 227

TDZE 226

Rwy 33 Idg 9300'

380

330

370

147°

TWR 319

1000-150

HIRL Rwy 15-33

RNAV (GPS) RWY 15

SE-4, 02 NOV 2023 to 30 NOV 2023

SE-4, 02 NOV 2023 to 30 NOV 2023