

# RNAV (GPS) RWY 33

APCH CRS	Rwy ldg	9300
327°	TDZE	226
	Arprt Elev	227

AL-146 [USA]

LAWSON AAF (KLSF)

RNP APCH

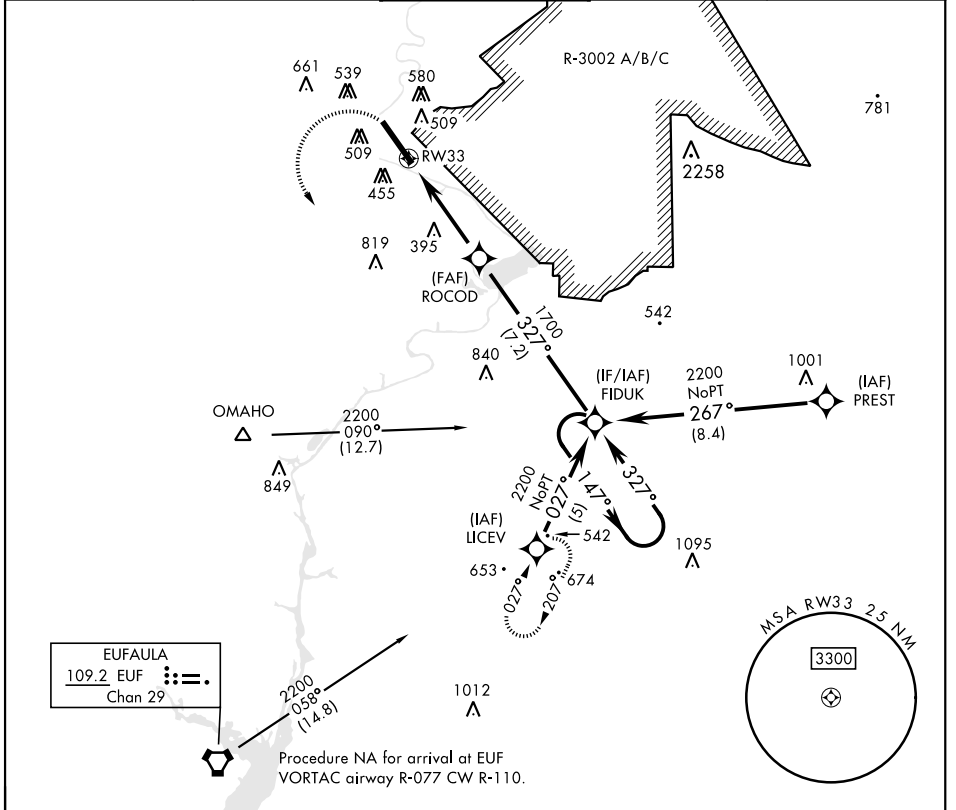
▼ \* When ALS inop, increase CAT D vis to 1½ miles.  
 \*\* Circling not authorized E of Rwy 15-33.

SALSF



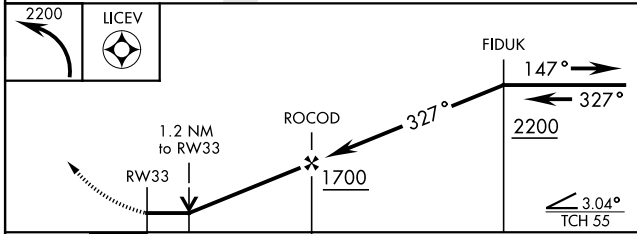
MISSED APPROACH: Climbing left turn to 2200 direct LICEV and hold.

ATIS ★ <b>134.375</b>	ATLANTA APP CON <b>125.5 323.1</b>	TOWER <b>119.05</b> (CTAF) <b>269.525</b>	GND CON <b>121.7 254.25</b>	CLNC DEL <b>121.7 251.15</b>
--------------------------	---------------------------------------	--	--------------------------------	---------------------------------

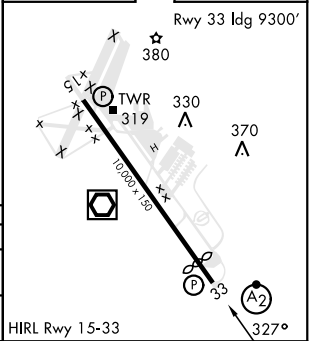


EUFULA  
109.2 EUF  
Chan 29

Procedure NA for arrival at EUF  
VORTAC airway R-077 CW R-110.



ELEV 227	TDZE 226
----------	----------



CATEGORY	A	B	C	D
LNAV MDA*	660/40	434 (500-¾)	660/50	660/60
CIRCLING**	820-1	593 (600-1)	840-1¾	880-2
			613 (700-1¾)	653 (700-2)

# RNAV (GPS) RWY 33

SE-4, 02 NOV 2023 to 30 NOV 2023

SE-4, 02 NOV 2023 to 30 NOV 2023