

VORTAC TRV <b>117.3</b> Chan <b>120</b>	APP CRS <b>298°</b>	Rwy Idg <b>7276</b> TDZE <b>22</b> Apt Elev <b>24</b>
---	------------------------	---

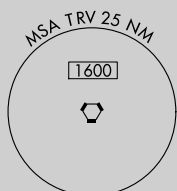
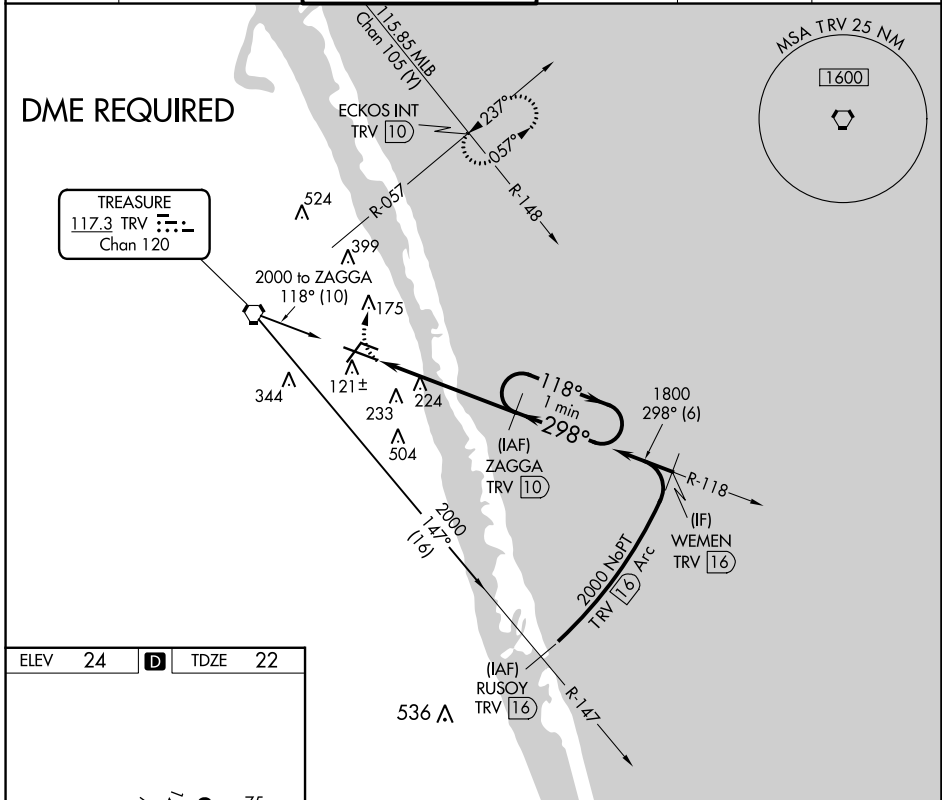
# VOR RWY 30L

VERO BEACH RGNL (VRB)

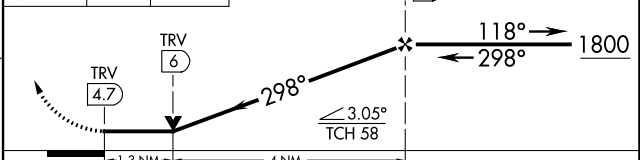
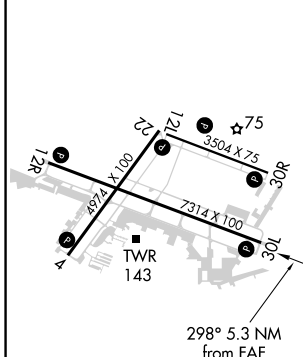
**⚠** Circling to Rwy 30R NA at night. When local altimeter setting not received, use Fort Pierce altimeter setting and increase all MDAs 40 feet and Circling Cat C/D visibility ½ SM. VDP NA with Fort Pierce altimeter setting. DME required.

**MISSED APPROACH:** Climbing right turn to 2000 on heading 360° and TRV VORTAC R-057 to ECKOS INT/TRV 10 DME and hold.

ATIS <b>120.575</b>	PALM BEACH APP CON <b>123.625 225.4 (N)</b>	VERO BEACH TOWER ★ <b>126.3 (CTAF) 0</b>	GND CON <b>127.45</b>	CLNC DEL <b>134.975</b>	UNICOM <b>122.95</b>
------------------------	--	---	--------------------------	----------------------------	-------------------------



ELEV <b>24</b>	<b>D</b>	TDZE <b>22</b>
----------------	----------	----------------



CATEGORY	A	B	C	D
S-30L	500-1	478 (500-1)	500-1¾	478 (500-1¾)
CIRCLING	560-1	536 (600-1)	660-1¾ 636 (700-1¾)	820-2½ 796 (800-2½)

MIRL Rwy 4-22, 12R-30L, and 12L-30R  
REIL Rwy 4, 12R, 22 and 30L

SE-3, 02 NOV 2023 to 30 NOV 2023

SE-3, 02 NOV 2023 to 30 NOV 2023