

EL CENTRO, CALIFORNIA

RNAV (GPS) RWY 8

WAAS CH 89932 W08A	APCH CRS 079°	Rwy ldg TDZE Arpt Elev	9503 -46 -42
---------------------------------	-------------------------	------------------------------	---

AL-472 (USN)

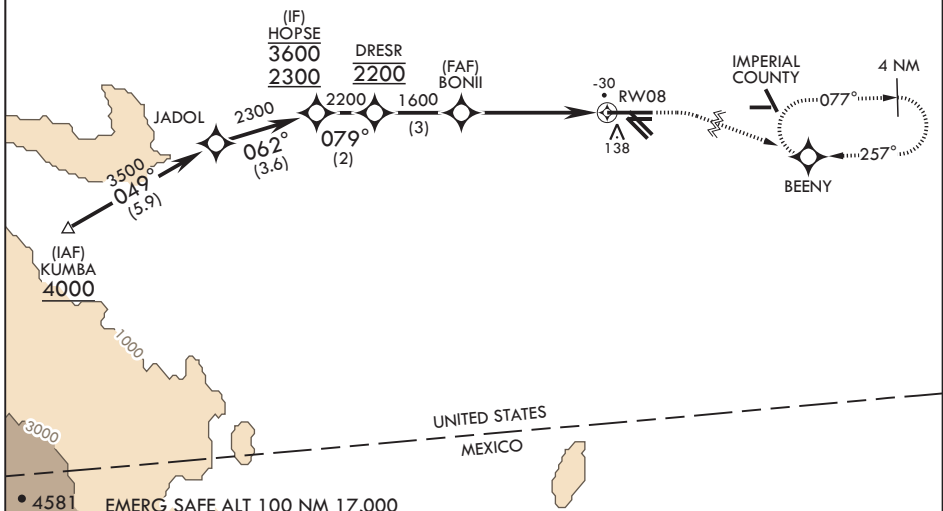
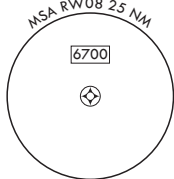
EL CENTRO NAF (VRACIU FLD) (KNJK)

RNP APCH	MISSED APPROACH: Climb to 800, then climbing right turn to 2400 direct BEENY and hold.			
<p>▼ Circling visibility reduction by helicopters NA. When tower closed, increase visibility to 1 mile.</p>				

ATIS ★ 269.275	LOS ANGELES CENTER 128.6 291.7	TOWER ★ 119.1 360.2	GND CON 121.9 254.35	CLNC DEL 340.2
--------------------------	--	-------------------------------	--------------------------------	--------------------------

Circling to Rwy 30 NA at night.

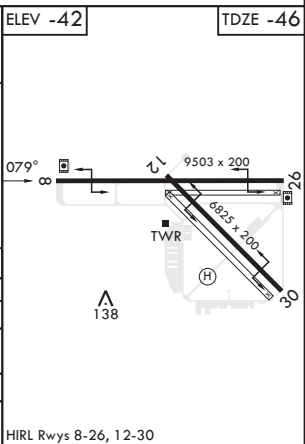
For uncompensated Baro-VNAV systems, LNAV/VNAV NA below -14°C (7°F) or above 54°C (129°F).



SW-3, 02 NOV 2023 to 30 NOV 2023

SW-3, 02 NOV 2023 to 30 NOV 2023

HOPSE	800	2400	BEENY	ELEV -42	TDZE -46
3600 2300	↑ crs 079°	↷	⊕		
GP 3.00° TCH 50	079°	DRESR 2200	BONII 1600	RW08	
			5 NM		
CATEGORY	A	B	C	D	
LPV DA	204-¾		250	(300-¾)	
LNAV/VNAV DA	204-¾ 250 (300-¾)	235-⅞ 281 (300-⅞)	249-⅞ 295 (300-⅞)	268-⅞ 314 (400-⅞)	
LNAV MDA	460-1	506 (600-1)	460-1½	506 (600-1½)	
C CIRCLING	480-1	522 (600-1)	480-1½ 522 (600-1½)	520-2 562 (600-2)	



EL CENTRO, CALIFORNIA
Orig 13JUL23

32°50'N - 115°40'W

EL CENTRO NAF (VRACIU FLD) (KNJK)

RNAV (GPS) RWY 8