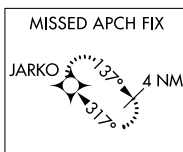
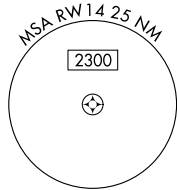
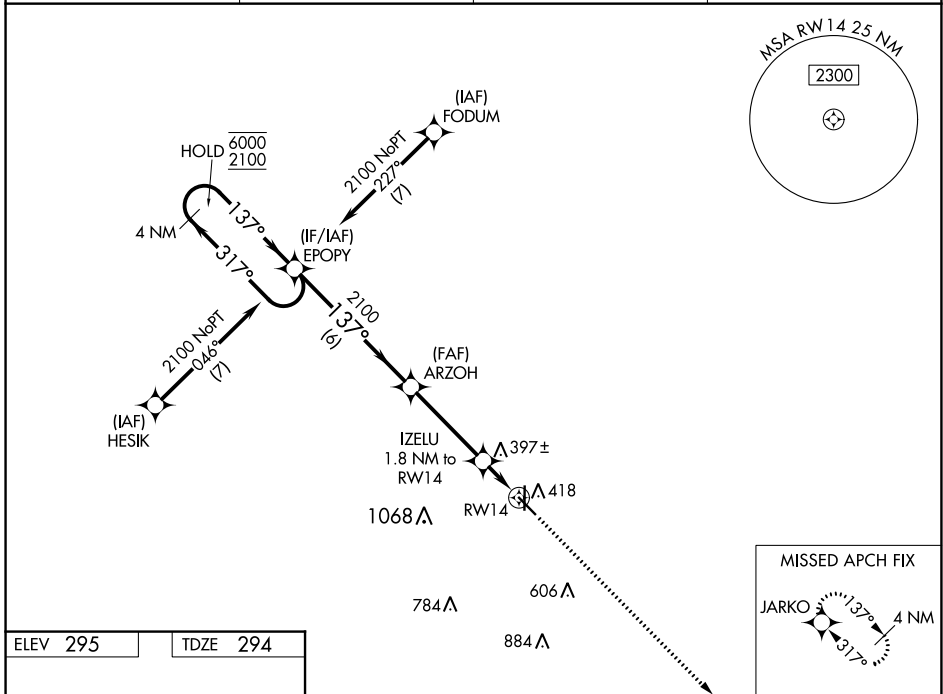


WAAS CH <b>61315</b> <b>W14A</b>	APP CRS <b>137°</b>	Rwy Idg TDZE Apt Elev	<b>5001</b> <b>294</b> <b>295</b>
--	------------------------	-----------------------------	---

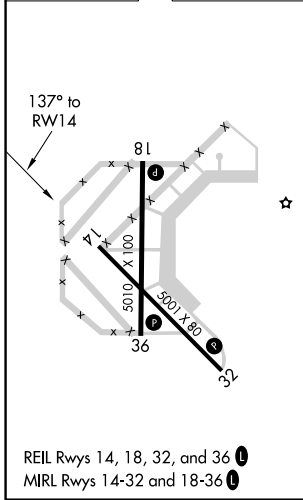
# RNAV (GPS) RWY 14

MALDEN RGNL (M.A.W)

RNP APCH-GPS.		MISSED APPROACH: Climb to 2100 direct JARKO and hold.	
<p><b>▼</b> For uncompensated Baro-VNAV systems, LNAV/VNAV  <b>▲</b> NA below -15°C or above 54°C.</p>			
AWOS-3PT <b>119.825</b>	MEMPHIS CENTER <b>133.65 292.15</b>	GCO <b>135.075</b>	UNICOM <b>122.8 (CTAF) 0</b>



ELEV 295	TDZE 294
----------	----------



	4 NM Holding Pattern	EPOPY	ARZOH	IZELU	JARKO
	6000 2100	2100	2100	2100	2100
	GP 3.00° TCH 40	137°	137°	137°	137°
		6 NM	3.7 NM	0.8 NM	1 NM
CATEGORY	A	B	C	D	
LPV DA		494-1	200 (200-1)		NA
LNAV/VNAV DA		544-1	250 (300-1)		NA
LNAV MDA		660-1	366 (400-1)		NA
<b>C</b> CIRCLING	720-1 425 (500-1)	800-1 505 (600-1)	800-1½ 505 (600-1½)		NA

NC-3, 02 NOV 2023 to 30 NOV 2023

NC-3, 02 NOV 2023 to 30 NOV 2023