

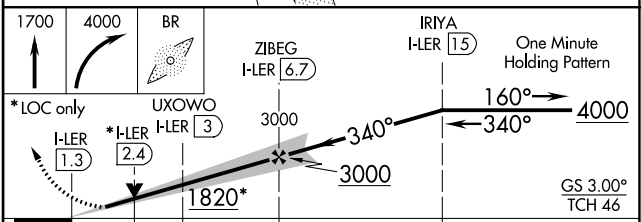
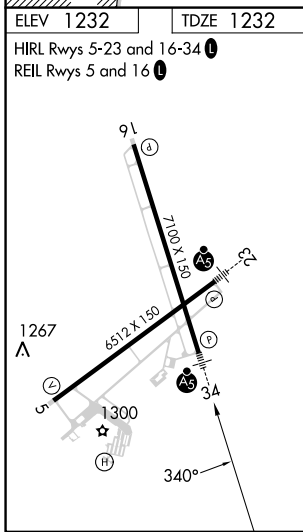
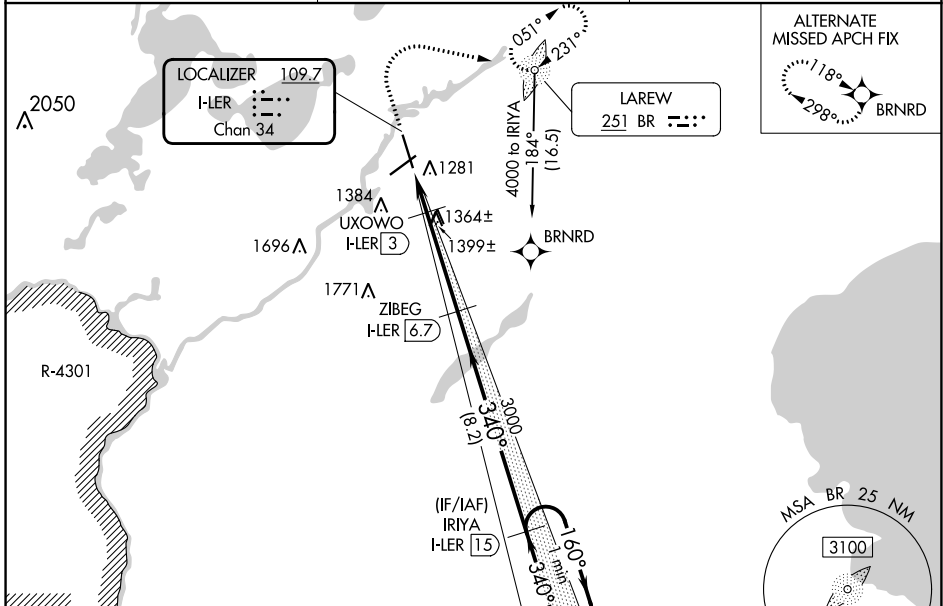
LOC/DME I- LER	APP CRS	Rwy Idg	7100
109.7	340°	TDZE	1232
Chan 34		Apt Elev	1232

ILS or LOC/DME RWY 34

BRainerd LAKES RGNL (BRD)

DME required. ADF required. RNP APCH-GPS. from GOLLF.	MALSR	MISSED APPROACH: Climb to 1700 then climbing right turn to 4000 direct BR LOM, continue climb-in-hold to 4000.
VDP NA with Aikin altimeter setting. When local altimeter setting not received, use Aikin altimeter setting: increase all DA to 1484; NA increase all MDAs 60 feet and visibility S-LOC 34 Cat C/D ¼ SM and visibility Circling Cat D ¼ SM.		

ASOS 126.775	MINNEAPOLIS CENTER 118.05 239.0	UNICOM 122.7(CTAF) 0
------------------------	---	--------------------------------



CATEGORY	A	B	C	D
S-ILS 34		1432-1/2	200 (200-1/2)	
S-LOC 34	1620-1/2	388 (400-1/2)	1620-5/8	388 (400-5/8)
C CIRCLING	1760-1	528 (600-1)	1760-1 1/2	1860-2
			528 (600-1 1/2)	628 (700-2)

NC-1, 02 NOV 2023 to 30 NOV 2023

NC-1, 02 NOV 2023 to 30 NOV 2023