

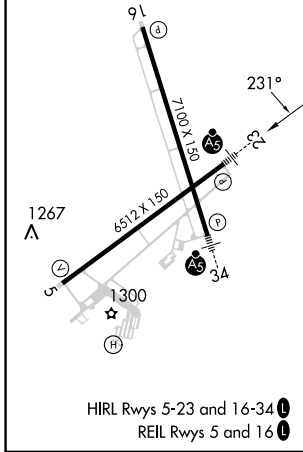
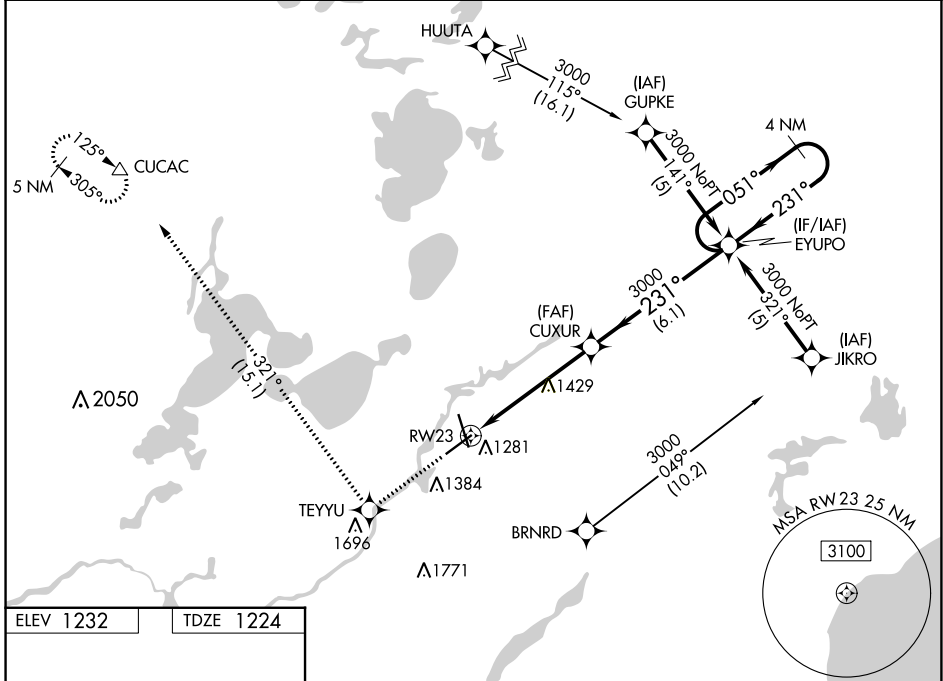
WAAS CH 82502 W23A	APP CRS 231°	Rwy Idg 6512 TDZE 1224 Apt Elev 1232
--	------------------------	---

RNAV (GPS) RWY 23

BRainerd LAKES RGNL (BRD)

RNP APCH. ▼ For uncompensated Baro-VNAV systems, LNAV/VNAV NA below -17°C or above 54°C. Baro-VNAV and VDP NA when using Aikin altimeter setting. When local altimeter setting not received, use Aikin altimeter setting and increase all DAs 52 feet and all MDAs 60 feet.	MALSR 	MISSED APPROACH: Climb to 3300 direct TEYU and on track 321° to CUCAC and hold.
--	-----------	---

ASOS 126.775	MINNEAPOLIS CENTER 118.05 239.0	UNICOM 122.7 (CTAF) 1
------------------------	---	--



3300	TEYU	Ir 321°	CUCAC	
*LNAV only		*1.5 NM to RWY 23		
RWY 23		CUXUR		EYUPO
1.5 NM		3.8 NM		6.1 NM
CATEGORY	A	B	C	D
LPV DA		1501-½	277 (300-½)	
LNAV/VNAV DA		1573-¾	349 (400-¾)	
LNAV MDA	1760-½	536 (600-½)	1760-1 536 (600-1)	1760-1½ 536 (600-1¼)
CIRCLING	1760-1	528 (600-1)	1760-1½ 528 (600-1½)	1860-2 628 (700-2)

NC-1, 02 NOV 2023 to 30 NOV 2023

NC-1, 02 NOV 2023 to 30 NOV 2023