

APP CRS 263°	Rwy Idg 3779
	TDZE 632
	Apt Elev 634

RNAV (GPS) RWY 26

GRIFFITH-MERRILLVILLE (Ø5C)

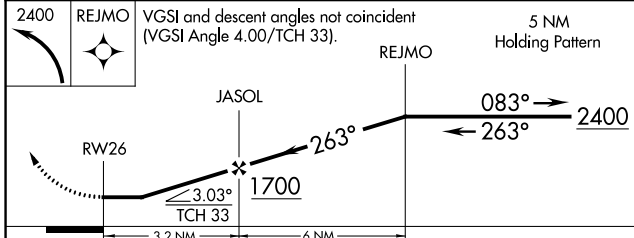
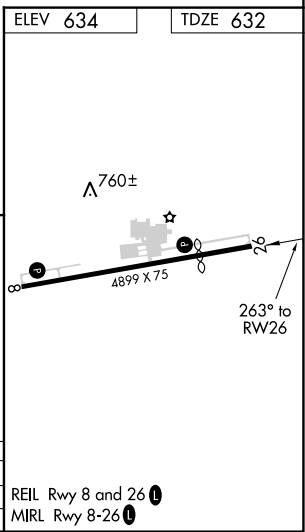
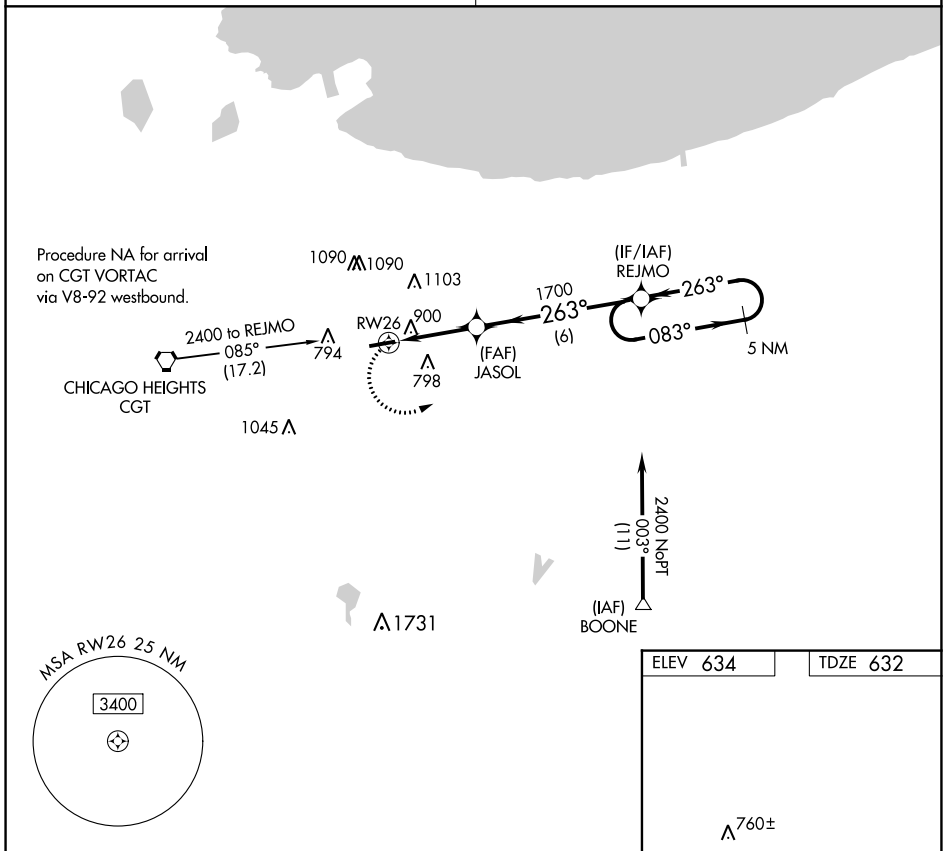
RNP APCH

Obtain local altimeter setting on CTAF; when not received use Chicago Midway Intl altimeter setting and increase all MDAs 60 feet. Visibility reduction by helicopters NA. Procedure NA at night.

MISSED APPROACH: Climbing left turn to 2400 direct REJMO and hold.

CHICAGO APP CON
133.1 285.6

UNICOM
123.0 (CTAF)



CATEGORY	A	B	C	D
LNAV MDA	1160-1	528 (600-1)		NA
CIRCLING	1200-1	566 (600-1)		NA

REIL Rwy 8 and 26

MIRL Rwy 8-26

EC-2, 02 NOV 2023 to 30 NOV 2023

EC-2, 02 NOV 2023 to 30 NOV 2023