

APP CRS	Rwy Idg	4899
083°	TDZE	634
	Apt Elev	634

RNAV (GPS) RWY 8

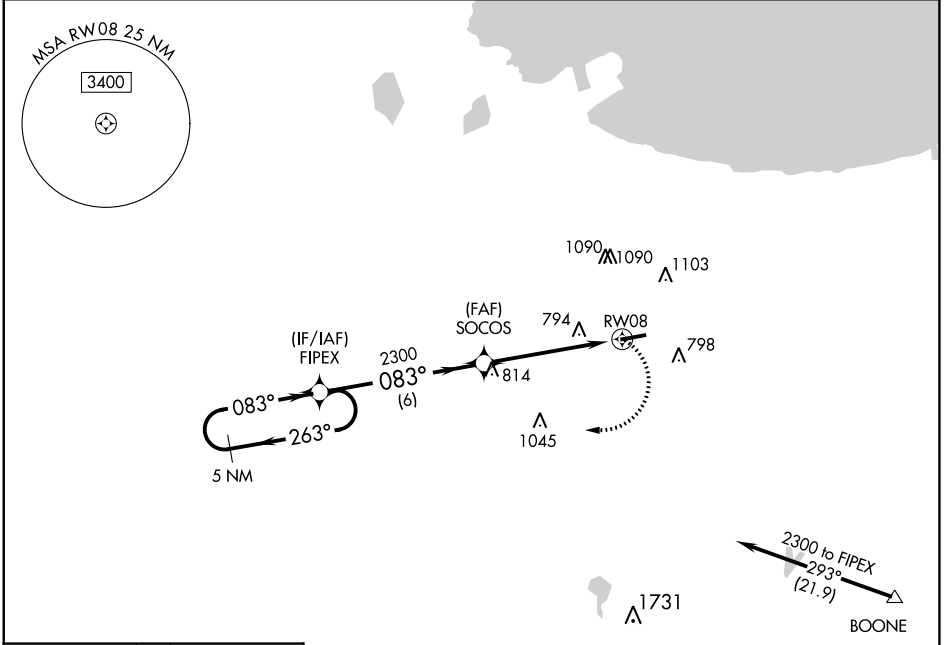
GRIFFITH-MERRILLVILLE (Ø5C)

RNP APCH:
 ▽ Obtain local altimeter setting on CTAF; when not received use Chicago Midway
 ▲ NA Init altimeter setting and increase all MDAs 60 feet. Visibility reduction by
 helicopters NA. Procedure NA at night.

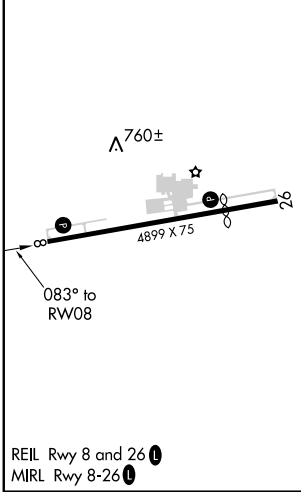
MISSED APPROACH: Climbing right
 turn to 2300 direct FIPEX and hold.

CHICAGO APP CON
133.1 285.6

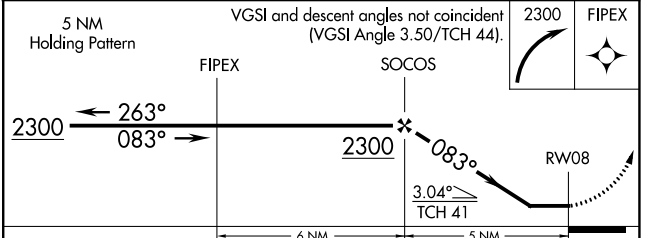
UNICOM
123.0 (CTAF) 0



ELEV 634	TDZE 634
----------	----------



Procedure NA for arrivals
 at BOONE via V422
 southeastbound.



CATEGORY	A	B	C	D
LNAV MDA	1080-1	446 (500-1)	NA	
<input checked="" type="checkbox"/> CIRCLING	1200-1	566 (600-1)	NA	

EC-2, 02 NOV 2023 to 30 NOV 2023

EC-2, 02 NOV 2023 to 30 NOV 2023