

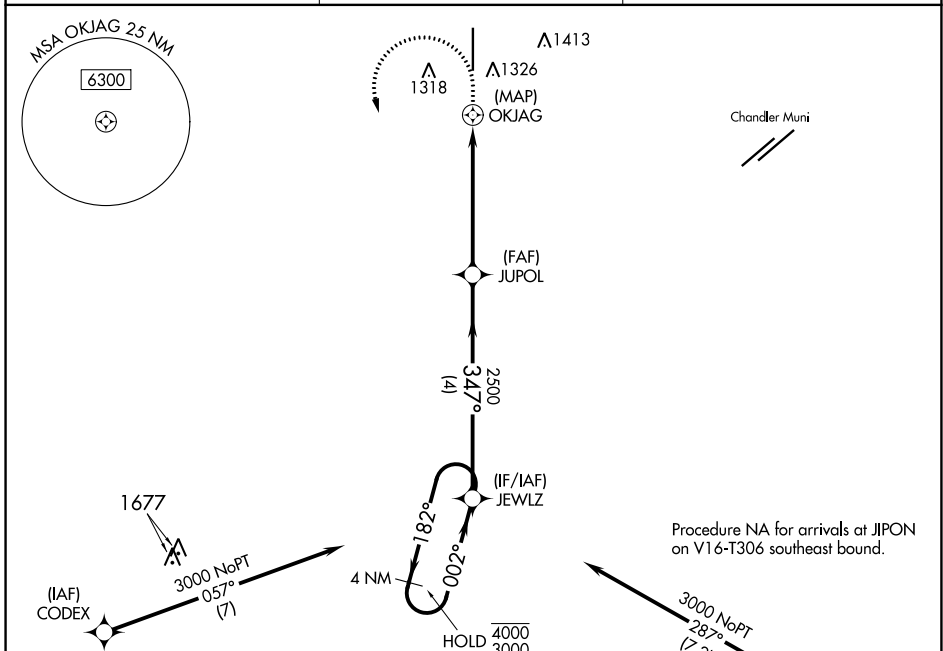
WAAS CH 83489 W35A	APP CRS 347°	Rwy Idg TDZE 1178 Apt Elev 1179
--	------------------------	---

RNAV (GPS) RWY 35

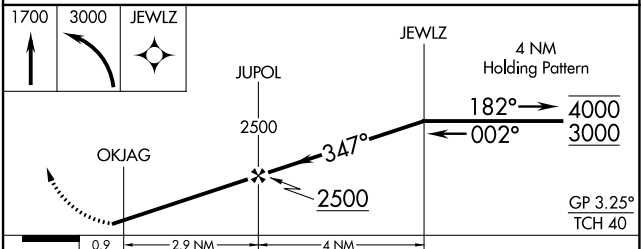
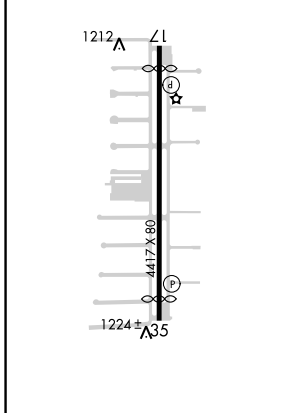
STELLAR AIRPARK (P19)

RNP APCH - GPS.	MISSED APPROACH: (Do not exceed 200K until JEWLZ) Climb to 1700 then climbing left turn to 3000 direct JEWLZ and hold.
▼ Use Phoenix Sky Harbor Intl altimeter setting. Rwy 35 helicopter visibility reduction below 1 SM NA. Activate MRL Rwy 17-35 and PAPI Rwy 17-35 - CTAf. RADAR required.	

PHX ASOS 127.575	PHOENIX APP CON 123.7 363.0	UNICOM 122.975 (CTAF) 0
----------------------------	---------------------------------------	-----------------------------------



ELEV 1179	D	TDZE 1178
MRL Rwy 17-35		
REIL Rwy 17 and 35		



CATEGORY	A	B	C	D
LPV DA	1457-1 279 (300-1)			NA
LNAV MDA	1620-1	442 (500-1)	1620-1 3/8 442 (500-1 3/8)	NA
CIRCLING	1760-1	581 (600-1)	1760-1 1/2 581 (600-1 1/2)	NA

SW-4, 02 NOV 2023 to 30 NOV 2023

SW-4, 02 NOV 2023 to 30 NOV 2023