

WAAS CH <b>78125</b> <b>W27A</b>	APP CRS <b>268°</b>	Rwy Idg TDZE Apt Elev	<b>4799</b> <b>2728</b> <b>2729</b>
--	------------------------	-----------------------------	---

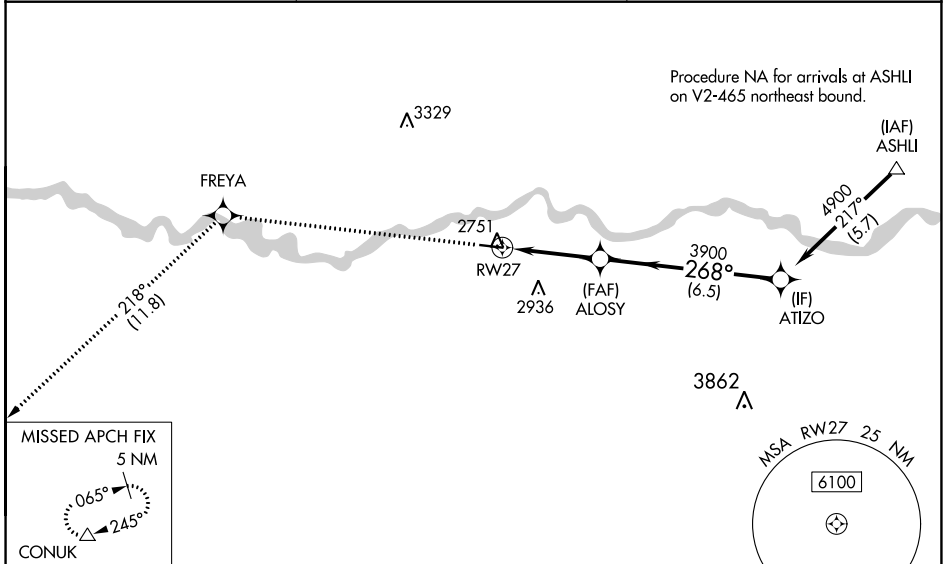
# RNAV (GPS) RWY 27

TILLITT FLD (1S3)

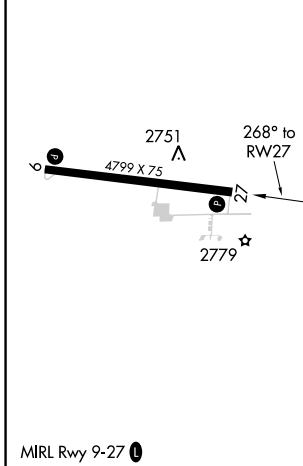
**NA** For uncompensated Baro-VNAV systems, LNAV/VNAV NA below -20°C (-4°F) or above 53°C (128°F). DME/DME RNP-0.3 NA. Helicopter visibility reduction below 3/4 SM NA. When local altimeter setting not received, use Miles City altimeter setting: increase LPV and LNAV/VNAV DA to 3066 and all visibilities 1/8 mile. Increase all MDA 100 feet and all Cat C and D visibilities 1/4 mile. VDP and Baro-VNAV NA when using Miles City altimeter setting.

**MISSED APPROACH:** Climb to 6000 direct FREYA and on track 218° to CONUK and hold.

AWOS-AV <b>122.8</b>	SALT LAKE CENTER <b>126.85 305.2</b>	UNICOM <b>122.8 (CTAF)</b>
-------------------------	---	-------------------------------



ELEV 2729	TDZE 2728
-----------	-----------



6000	FREYA	tr 218°	CONUK	VGSI and RNAV glidepath not coincident (VGSI Angle 3.00/TCH 29).	ATIZO
				ALOSY	
					4900
					3900
					268°
					3900
					GP 3.00° TCH 51
					0.9 NM
					2.6 NM
					6.5 NM
CATEGORY	A	B	C	D	
LPV DA		2978-1	250 (300-1)		
LNAV/VNAV DA		2978-1	250 (300-1)		
LNAV MDA		3040-1	312 (400-1)		
<b>CIRCLING</b>	3160-1 431 (500-1)	3320-1 591 (600-1)	3340-1 3/4 611 (700-1 3/4)	3700-3 971 (1000-3)	

NW-1, 02 NOV 2023 to 30 NOV 2023

NW-1, 02 NOV 2023 to 30 NOV 2023