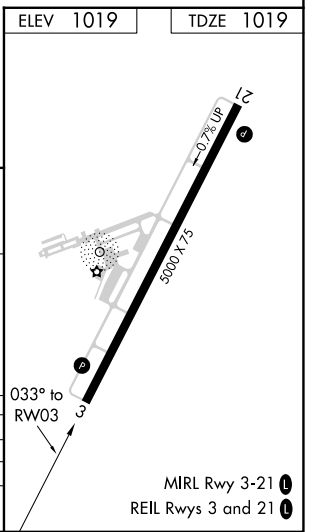
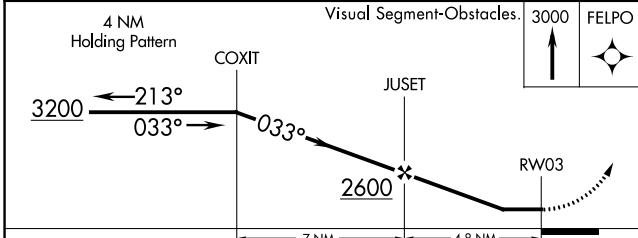
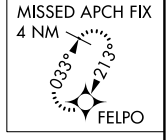
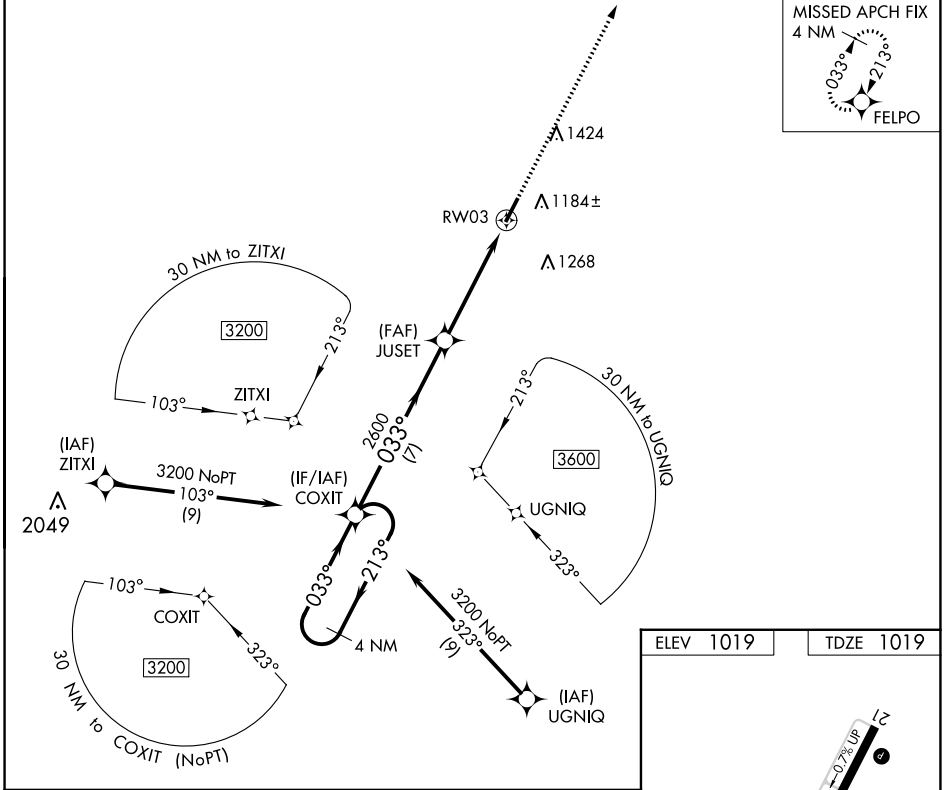


WAAS CH 81933 W03A	APP CRS 033°	Rwy Idg TDZE Apt Elev	5000 1019 1019
--	------------------------	-----------------------------	---

RNAV (GPS) RWY 3

MOUNT STERLING/MONTGOMERY COUNTY (IOB)

<p>NA DME/DME RNP-0.3 NA. When local altimeter setting not received, use Lexington altimeter setting and increase all MDA 80 feet and all visibilities ¼ mile. Helicopter visibility reduction below ¾ SM NA.</p>		<p>MISSED APPROACH: Climb to 3000 direct FELPO and hold.</p>	
AWOS-3 120.675	LEXINGTON APP CON 120.15 259.3	GCO 121.72	UNICOM 122.8 (CTAF) 0



CATEGORY	A	B	C	D
LP MDA	1540-1	521 (600-1)	1540-1½	521 (600-1½)
LNAV MDA	1560-1	541 (600-1)	1560-1¾	541 (600-1¾)
CIRCLING	1560-1	541 (600-1)	1740-2 721 (800-2)	1740-2¼ 721 (800-2¼)

SE-1, 02 NOV 2023 to 30 NOV 2023

SE-1, 02 NOV 2023 to 30 NOV 2023

MIRL Rwy 3-21 **0**
 REIL Rws 3 and 21 **0**