

APP CRS	Rwy Idg	3215
021°	TDZE	9
	Apt Elev	11

RNAV (GPS) RWY 2

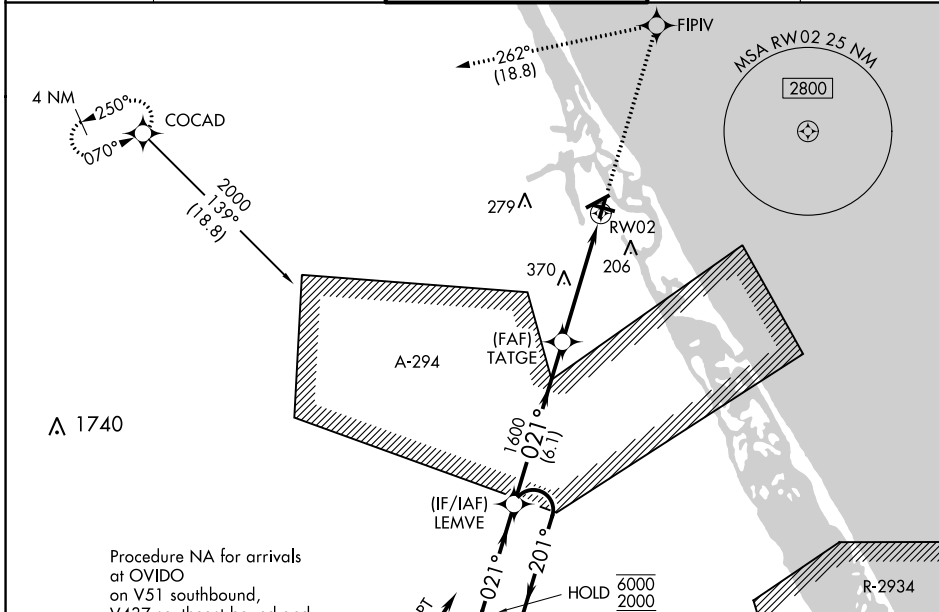
NEW SMYRNA BEACH MUNI (EVB)

RNP APCH-GPS

⚠ Rwy 2 helicopter visibility reduction below 3/4 SM NA. VDP NA when using Daytona Beach altimeter setting. Straight-in Rwy 2 NA at night, Circling Rwy 7, 11, 25 NA at night.
⚠ When local altimeter setting not received, use Daytona Beach altimeter setting and increase all MDA 40 feet.

MISSED APPROACH: Climb to 2000 direct FIPV and left turn on track 262° to COCAD and hold.

ATIS 124.625	DAYTONA APP CON 125.35 322.3	NEW SMYRNA TOWER BEACH★ 119.675 (CTAF) 0	GND CON 121.325	UNICOM 122.95
------------------------	--	--	---------------------------	-------------------------



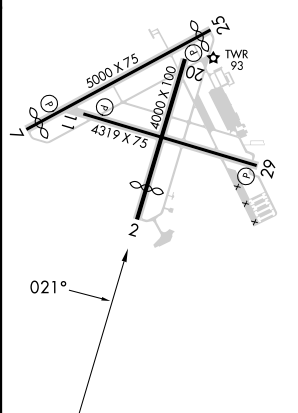
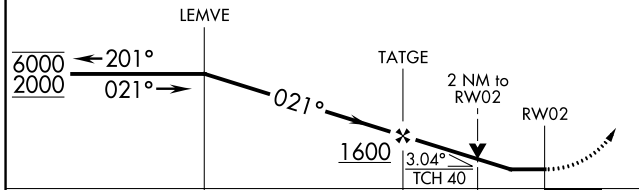
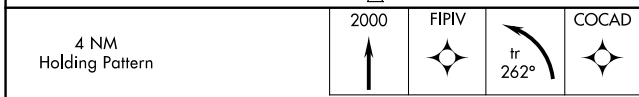
Procedure NA for arrivals at OVIDO on V51 southbound, V437 southeast bound and V533 southwest bound.

SE-3, 02 NOV 2023 to 30 NOV 2023

SE-3, 02 NOV 2023 to 30 NOV 2023

ELEV 11	D TDZE 9
---------	-----------------

MIRL Rws 7-25 and 11-29
 REIL Rws 7 and 25



CATEGORY	A	B	C	D
LNVA MDA	700-1	691 (700-1)	700-2	691 (700-2)
C CIRCLING	700-1 1/4	689 (700-1 1/4)	700-2 689 (700-2)	700-2 1/4 689 (700-2 1/4)