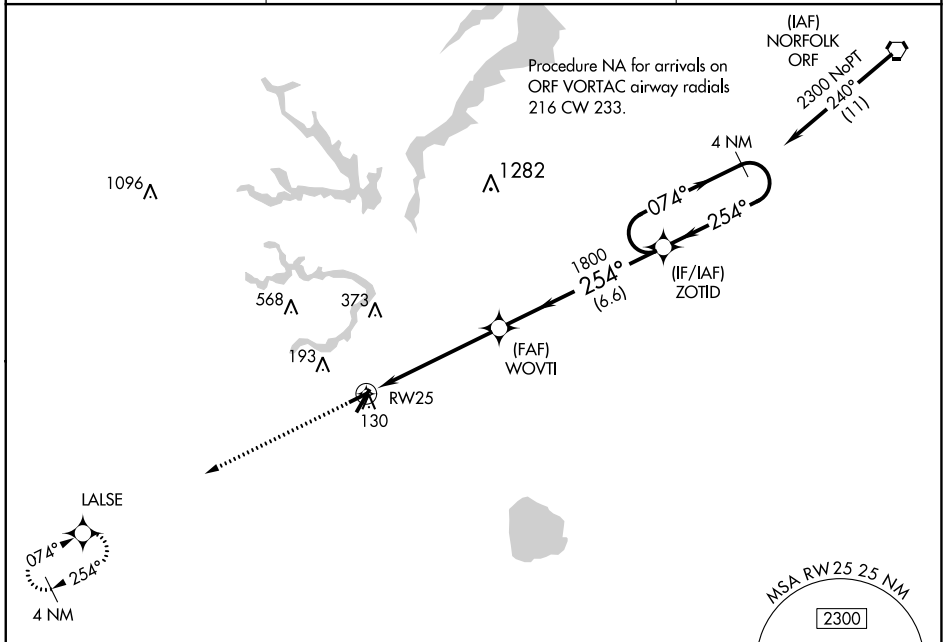


APP CRS	Rwy Idg	<b>3750</b>
<b>254°</b>	TDZE	<b>69</b>
	Apt Elev	<b>70</b>

# RNAV (GPS) RWY 25

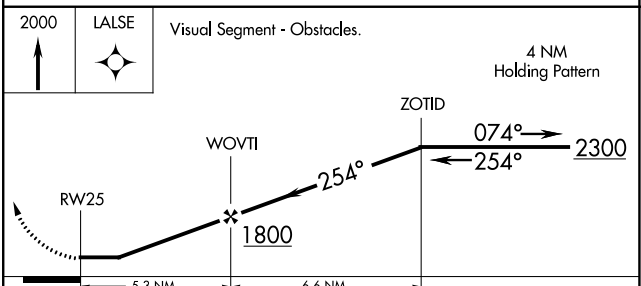
SUFFOLK EXEC (SFQ)

<p><b>⚠</b> DME/DME RNP-0.3 NA. Helicopter visibility reduction below 1 SM NA.  <b>⚠</b> When local altimeter setting not received, use Norfolk Intl altimeter setting and increase all MDA 60 feet.</p>		<p>MISSED APPROACH: Climb to 2000 direct LALSE and hold.</p>
<p>AWOS-3 <b>119.375</b></p>	<p>NORFOLK APP CON <b>127.9 269.425</b></p>	<p>UNICOM <b>122.7 (CTAF)</b></p>



NE-3, 02 NOV 2023 to 30 NOV 2023

NE-3, 02 NOV 2023 to 30 NOV 2023



CATEGORY	A	B	C	D
LNAV MDA	480-1	411 (500-1)	NA	
<b>C</b> CIRCLING	500-1 430 (500-1)	560-1 490 (500-1)	NA	

SUFFOLK, VIRGINIA  
Amdt 1B 02MAR17

36°41'N-76°36'W

# RNAV (GPS) RWY 25

SUFFOLK EXEC (SFQ)