

WAAS CH 77930 W33A	APP CRS 331°	Rwy Idg TDZE 968 Apt Elev 968
--	------------------------	---

RNAV (GPS) RWY 33

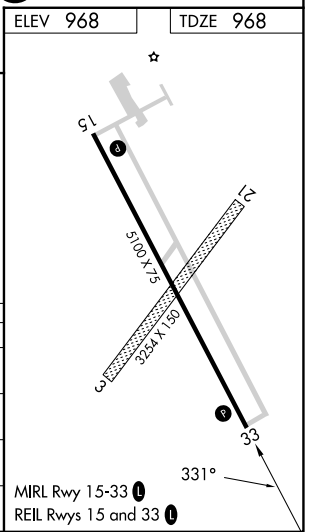
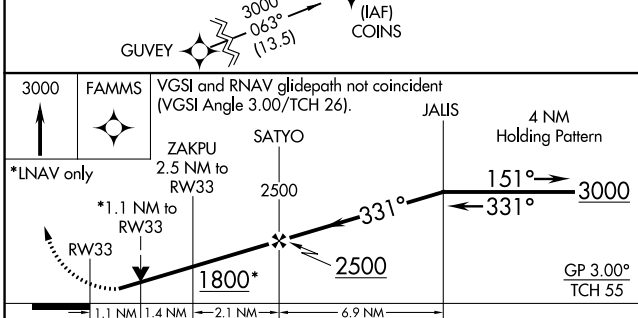
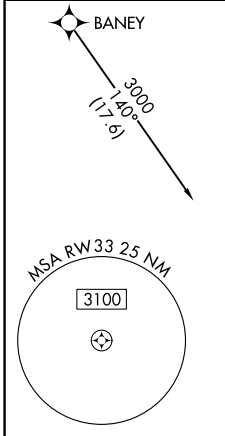
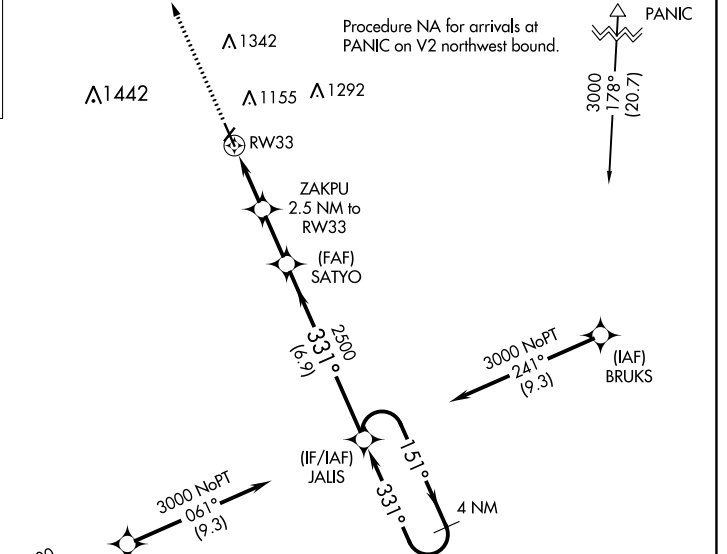
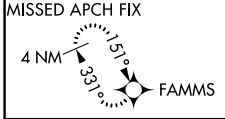
HARRY STERN (BWP)

RNP APCH-GPS

▼ Circling NA to Rws 3 and 21. For uncompensated Baro-VNAV systems, LNAV/VNAV NA below -16°C or above 54°C. Rwy 33 helicopter visibility reduction below 3/4 SM NA. When local altimeter setting not received, use Fergus Falls altimeter setting: increase LPV DA to 1292 and all visibilities 3/8 SM; increase LNAV/VNAV DA to 1326 and all visibilities 3/8 SM; increase all MDA 80 feet and visibility LNAV all Cats 3/8 SM and Circling Cat C and D 1/4 SM. Baro-VNAV and VDP NA when using Fergus Falls altimeter setting. When Circling to Rwy 15 at night, operational VGSI required, remain on or above VGSI glidepath until threshold.

▲ MISSED APPROACH: Climb to 3000 direct FAMMS and hold.

AWOS-3 127.875	MINNEAPOLIS CENTER 127.35 278.3	UNICOM 123.0 (CTAF)
--------------------------	---	-------------------------------



CATEGORY	A	B	C	D
LPV DA		1218-3/4	250 (300-3/4)	
LNAV/VNAV DA		1252-7/8	284 (300-7/8)	
LNAV MDA		1340-1	372 (400-1)	
CIRCLING	1520-1	552 (600-1)	1660-2 692 (700-2)	1660-2 1/4 692 (700-2 1/4)

NC-1, 02 NOV 2023 to 30 NOV 2023

NC-1, 02 NOV 2023 to 30 NOV 2023