

APP CRS	Rwy Idg	<b>4864</b>
<b>172°</b>	TDZE	<b>1364</b>
	Apt Elev	<b>1364</b>

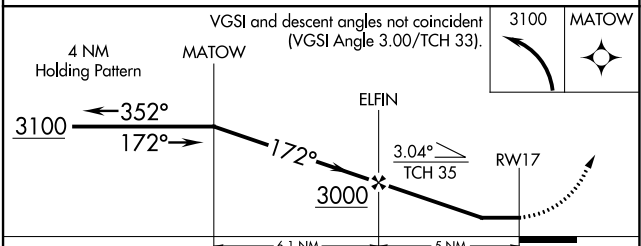
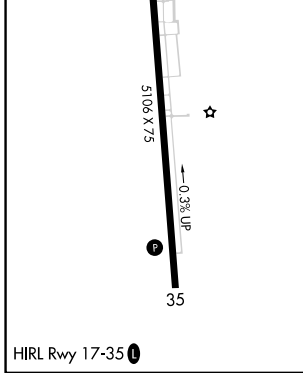
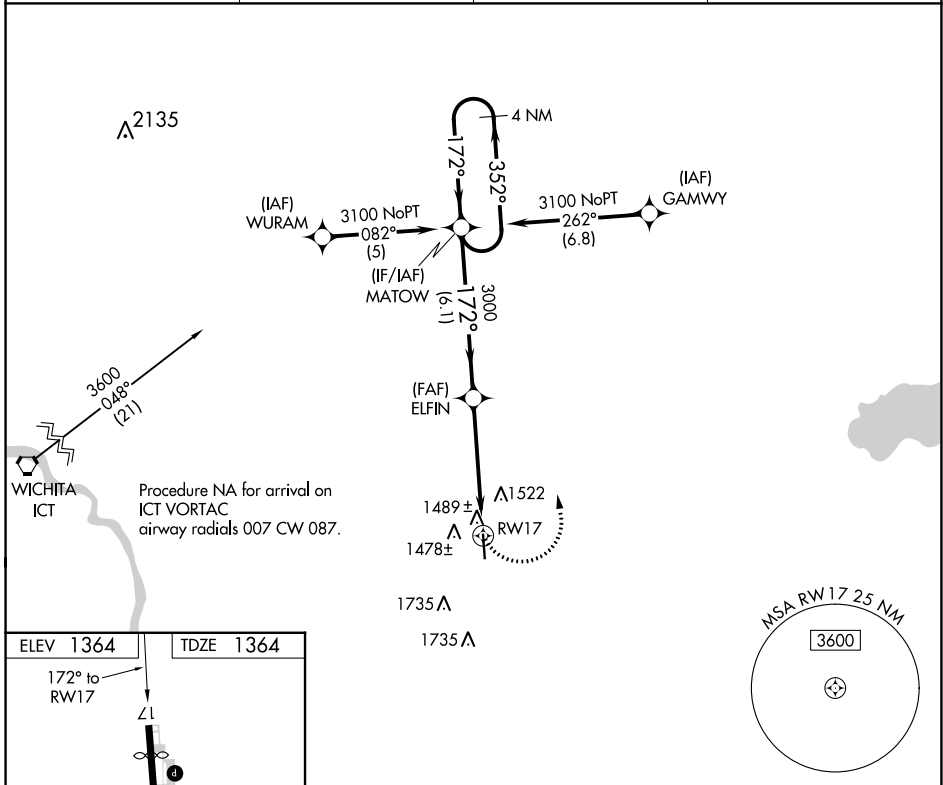
# RNAV (GPS) RWY 17

LLOYD STEARMAN FLD (1K1)

**⚠** DME/DME RNP-0.3 NA. When local altimeter setting not received, use Wichita Dwight D Eisenhower Nil altimeter setting and increase Circling Cat C MDA 60 feet. Straight-in Rwy 17 NA at night, Circling Rwy 17 NA at night. Rwy 17 helicopter visibility reduction below 1 SM NA.

**⚠ NA** MISSED APPROACH: Climbing left turn to 3100 direct MATOW and hold.

AWOS-2 <b>118.3</b>	WICHITA APP CON <b>134.8 269.1</b>	CLNC DEL <b>125.0</b>	UNICOM <b>123.075 (CTAF) 0</b>
------------------------	---------------------------------------	--------------------------	-----------------------------------



CATEGORY	A	B	C	D
LNAV MDA	1820-1	456 (500-1)	1820-1 3/8 456 (500-1 3/8)	NA
CIRCLING	1920-1	556 (600-1)	2040-2 676 (700-2)	NA

NC-2, 02 NOV 2023 to 30 NOV 2023

NC-2, 02 NOV 2023 to 30 NOV 2023