

WAAS CH 58033 W16A	APP CRS 159°	Rwy Idg TDZE Apt Elev	4007 1368 1368
---------------------------------	------------------------	-----------------------------	---

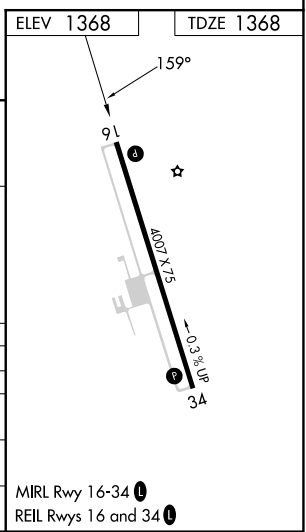
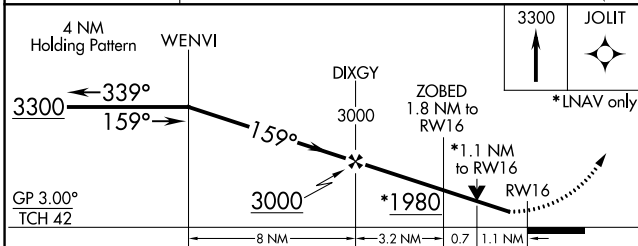
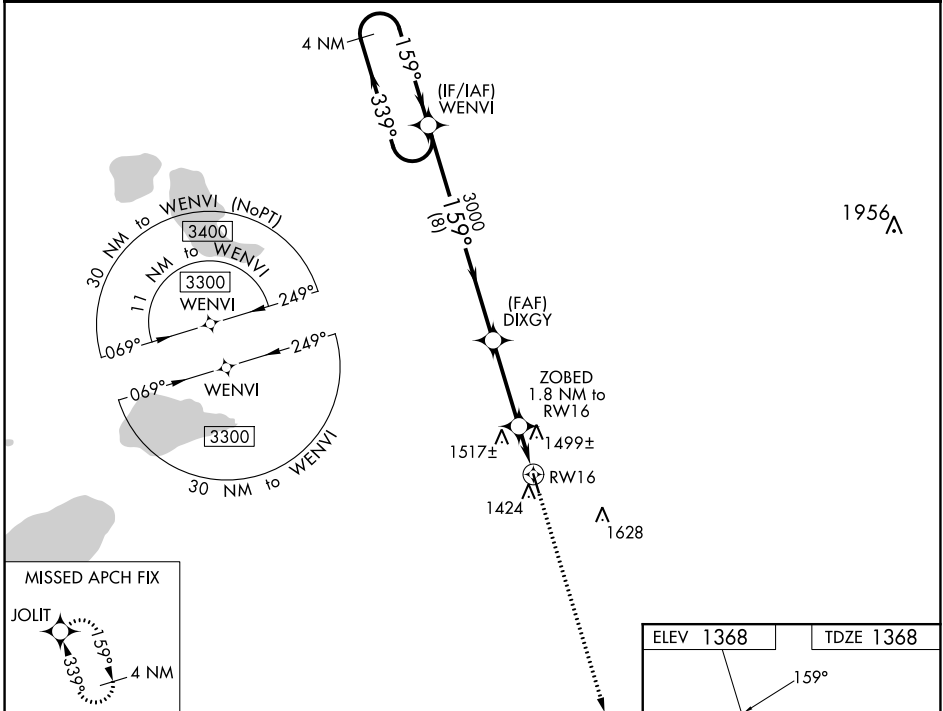
RNAV (GPS) RWY 16

WADENA MUNI (ADC)

⚠ DME/DME RNP-0.3 NA. Helicopter visibility reduction below 1 SM NA. VDP and Baro-VNAV NA with Staples altimeter setting. When local altimeter setting not received, use Staples altimeter setting and increase all DA 52 feet and all MDA 60 feet, increase LNAV/VNAV visibility 1/8 mile, LNAV Cat C visibility 1/4 mile and Circling Cat C visibility 1/4 mile. For uncompensated Baro-VNAV systems, LNAV/VNAV NA below -17°C (1°F) or above 54°C (130°F).

MISSED APPROACH:
Climb to 3300 direct JOLIT and hold.

AWOS-3PT 118.875	MINNEAPOLIS CENTER 126.1 269.2	GCO 121.725	UNICOM 122.8 (CTAF) 0
----------------------------	--	-----------------------	---------------------------------



CATEGORY	A	B	C	D
LPV DA	1631-1	263 (300-1)		NA
LNAV/VNAV DA	1767-1 $\frac{1}{8}$	399 (400-1 $\frac{1}{8}$)		NA
LNAV MDA	1760-1	392 (400-1)	1760-1 $\frac{1}{8}$ 392 (400-1 $\frac{1}{8}$)	NA
C CIRCLING	1780-1 412 (500-1)	1820-1 452 (500-1)	1940-1 $\frac{1}{2}$ 572 (600-1 $\frac{1}{2}$)	NA

NC-1, 02 NOV 2023 to 30 NOV 2023

NC-1, 02 NOV 2023 to 30 NOV 2023