

MITCHELL MUNI (MHE)(KMHE) 3 N UTC-6(-5DT) N43°46.49' W98°02.32'

OMAHA
H-21, L-12H
IAP

1304 B NOTAM FILE MHE

RWY 13-31: H6701X100 (ASPH) S-55, D-90, 2S-114, 2D-120 HIRL

RWY 13: REIL. PAPI(P4L)—GA 3.0° TCH 45'.

RWY 31: MALSR. PAPI(P4L)—GA 3.0° TCH 61'.

RWY 18-36: H5513X100 (ASPH-PFC) S-35, D-90, 2S-114, 2D-110

MIRL 0.4% up S

RWY 18: REIL. PAPI(P4L)—GA 3.0° TCH 55'.

RWY 36: PAPI(P4L)—GA 3.0° TCH 50'.

SERVICE: S4 FUEL 100LL, JET A LGT ACTIVATE MALSR Rwy 31; REIL Rwy 13 and Rwy 18; PAPI Rwy 13, 31, 18 and 36; HIRL Rwy 13-31; MIRL Rwy 18-36—CTAF.

AIRPORT REMARKS: Attended 1400-0000Z†. For attendant other hrs call 605-996-1228. Fuel avbl 24 hrs a day. Ultralight activity on and invof arpt. Migratory birds on and invof arpt.

AIRPORT MANAGER: 605-770-4594

WEATHER DATA SOURCES: ASOS 124.175 (605) 995-5803.

COMMUNICATIONS: CTAF/UNICOM 122.8

RCO 122.3 (HURON RADIO)

Ⓜ MINNEAPOLIS CENTER APP/DEP CON 126.25

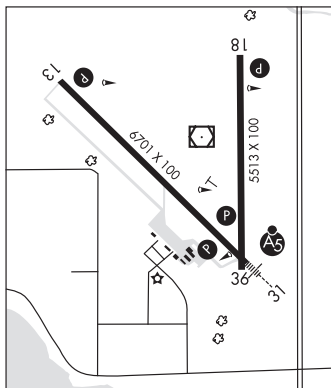
CLEARANCE DELIVERY PHONE: For CD if una to ctc on FSS freq, ctc Minneapolis ARTCC at 651-463-5588.

AIRSPACE: CLASS E.

RADIO AIDS TO NAVIGATION: NOTAM FILE MHE.

(L) (L) VORW/DME 114.15 MHE Chan 88(Y) N43°46.62' W98°02.25' at fld. 1298/4E.

ILS 109.7 L-PA Rwy 31. Class IT. Glideslope unusable for autopilot coupled apch blo 2,174' MSL. Unmonitored.



MOBRIDGE MUNI (MBG)(KMBG) 1 NE UTC-6(-5DT) N45°32.78' W100°24.38'

TWIN CITIES
L-14F
IAP

1716 B NOTAM FILE MBG

RWY 12-30: H4410X75 (ASPH) S-15 MIRL

RWY 12: PAPI(P2L)—GA 3.0° TCH 30'.

RWY 30: PAPI(P2R)—GA 3.0° TCH 31'.

RWY 17-35: 2399X250 (TURF) 1.0% up N

RWY 17: Road.

SERVICE: S2 FUEL 100LL, JET A, MOGAS LGT ACTIVATE MIRL Rwy 12-30 —CTAF.

AIRPORT REMARKS: Attended Mon-Fri 1500-0000Z†, Sat on call 1500-0000Z† FBO closed Sun. Wildlife on and invof arpt. Rwy 17-35 sfc some gopher holes. For jet fuel pre-arrange amgr 605-441-0165. Rwy 17-35 CLOSED winter months.

AIRPORT MANAGER: 605-850-9935

WEATHER DATA SOURCES: ASOS 121.425 (605) 845-5024.

COMMUNICATIONS: CTAF/UNICOM 122.8

RCO 122.3 (HURON RADIO)

Ⓜ MINNEAPOLIS CENTER APP/DEP CON 135.25

GCO 121.725 (4 clicks to MINNEAPOLIS CENTER)

CLEARANCE DELIVERY PHONE: For CD if una to ctc on FSS freq, ctc Minneapolis ARTCC at 651-463-5588.

RADIO AIDS TO NAVIGATION: NOTAM FILE HON.

DUPREE (VH) (DH) VORW/DME 116.8 DPR Chan 115 N45°04.69' W101°42.90' 053° 62.1 NM to fld. 2501/10E.

