

ELIZABETH FLD (See FISHERS ISLAND on page 205)

## ELLENVILLE

JOSEPH Y RESNICK (N89) 1 NE UTC-5(-4DT) N41°43.73' W74°22.61'

NEW YORK  
L-33B, 34I  
IAP

290 B NOTAM FILE ISP

RWY 04-22: H3839X75 (ASPH) MIRL

RWY 04: REIL. PAPI(P2L)—GA 3.5° TCH 40'. Trees.

RWY 22: REIL. PAPI(P2L)—GA 3.0° TCH 39'. Thld dspcd 309'. Rgt ttc.

## RUNWAY DECLARED DISTANCE INFORMATION

RWY 04: TORA-3838 TODA-3838 ASDA-3838 LDA-3538

RWY 22: TORA-3838 TODA-3838 ASDA-3838 LDA-3538

SERVICE: S2 FUEL 100LL LGT ACTIVATE REIL Rwy 04 and Rwy 22, PAPI Rwy 04 and Rwy 22, MIRL Rwy 04-22—CTAF.

**AIRPORT REMARKS:** Attended 1300Z†-dusk. Rwy 04 +60' trees 200' from rwy 191' rgt. Rwy 22 +8' fence crosses runway, 24' from thld. Avoid overflight of school and village when taking off Rwy 22 or apch to Rwy 04, helicopter operations follow fixed wing flight pattern. Avoid overflight of hospital and school bldgs approx 1 mile southwest of Rwy 22 and prison approx 1/2 mile northeast of arpt. Cold temperature airport. Altitude correction required at or below -6C.

AIRPORT MANAGER: 845-647-7800

COMMUNICATIONS: CTAF/UNICOM 122.8

® NEW YORK APP/DEP CON 132.75

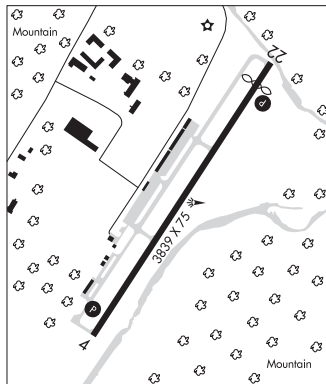
CLEARANCE DELIVERY PHONE: For CD ctc New York Apxh at 516-683-2448

RADIO AIDS TO NAVIGATION: NOTAM FILE ISP.

KINGSTON (L) VOR/DME 117.6 IGN Chan 123 N41°39.93' W73°49.33' 291° 25.2 NM to fld. 581/12W. VOR unusable:

045°-050° byd 35 NM blo 4,300'

070°-140° byd 30 NM blo 3,400'



ELMIRA/CORNING RGNL (ELM)(KELM) 6 NW UTC-5(-4DT) N42°09.59' W76°53.50'

NEW YORK  
H-10H, 12I, L-30I, 32F  
IAP, AD

955 B TPA—See Remarks LRA ARFF Index—See Remarks NOTAM FILE ELM

RWY 06-24: H8001X150 (ASPH-GRVD) S-80, D-121, 2S-154,

2D-200 PCN 50 F/C/X/T HIRL CL

RWY 06: MALSR. REIL. VASI(V4L)—GA 3.0° TCH 51'. RVR-TMR Thld dspcd 600'. Tree.

RWY 24: MALSR. REIL. PAPI(P4L)—GA 3.0° TCH 52'. RVR-TMR Thld dspcd 202'. Tree.

RWY 10-28: H5404X150 (ASPH-GRVD) S-57, D-90, 2S-114, 2D-150 PCN 17 F/C/X/T MIRL

RWY 10: Trees.

RWY 28: PAPI(P4L)—GA 3.0° TCH 40'. Thld dspcd 402'. Pole.

RWY 05-23: 2016X150 (TURF)

## RUNWAY DECLARED DISTANCE INFORMATION

RWY 05: TORA-2017 TODA-2017 ASDA-2017 LDA-2017

RWY 06: TORA-8001 TODA-8001 ASDA-8001 LDA-7401

RWY 10: TORA-5404 TODA-5404 ASDA-5004 LDA-5004

RWY 23: TORA-2017 TODA-2017 ASDA-2017 LDA-2017

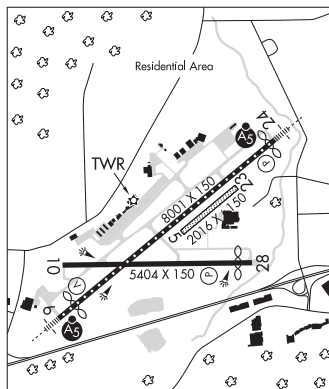
RWY 24: TORA-8001 TODA-8001 ASDA-8001 LDA-7799

RWY 28: TORA-5404 TODA-5404 ASDA-5404 LDA-5002

## ARRRESTING GEAR/SYSTEM

RWY 06: EMAS

SERVICE: S4 FUEL 100LL, JET A OX4 LGT When twr clsd ACTIVATE MALSR Rwy 06 and 24, centerline lgts Rwy 06-24, HIRL Rwy 06-24, twy lights on Twy A, Twy A1, Twy A2, Twy A3, Twy B, Twy D, Twy J, Twy L, Twy T and Twy C north of Rwy 06-24—CTAF. When twr clsd MIRL Rwy 10-28; twy lights on Twy E, Twy G, Twy H and Twy C south of Rwy 06-24 not avbl. PAPI Rwy 24 unusable byd 9° rgt of centerline.



CONTINUED ON NEXT PAGE

## CONTINUED FROM PRECEDING PAGE

**AIRPORT REMARKS:** Attended continuously. Extensive glider activity on and in/ovf arpt. Birds and deer on and in/ovf arpt. Blimp activity rqr PPR, ctc arpt management at 607-426-5621. Class I, ARFF Index B. ARFF index C equipment coverage is avbl upon req ctc arpt management at 607-426-5621. TPA—2500(1545) reciprocating eng, 3000(2045) Turboprop/Jet. Rwy 10 opr prohibited for acft with apch speeds greater than or equal to 121 knots and/or wingspans greater than or equal to 118'. Acft with wing spans greater than 93' should use extreme care when taxiing on Twy T adjacent to aprons. Rwy 05-23 (southeast of Rwy 06-24) unmarked seasonal use turf rwy clsd 1 Dec through 30 Apr. For land side access from apron when FBO clsd ctc ELM arpt attendant at 607-426-5621. Rwy 05-23 marked with asph L corner markers. Winter deicing on glycol apron only. Cold temperature airport. Altitude correction required at or below -22C. PAPI Twy H, Twy J, and Twy L limited to design Group II acft. Ldg fee for all non based acft. Terminal ramp is uncontrolled. Do not call for push/power back. Advise ground control when ready to taxi for dep. Twy T btn Twy L and Twy D non-movement area.

**AIRPORT MANAGER:** 607-739-5621

**WEATHER DATA SOURCES:** ASOS (607) 796-0065

**COMMUNICATIONS:** CTAF 121.1 ATIS 125.475 UNICOM 122.95

RCO 122.2 (BUFFALO RADIO)

Ⓡ **ELMIRA APP/DEP CON** 128.425 (1100-0500Z‡)

Ⓡ **NEW YORK CENTER APP/DEP CON** 133.35 (0500-1100Z‡)

ELMIRA TOWER 121.1 (1100-0500Z‡) **GND CON** 121.9 **CLNC DEL** 121.9

**CLEARANCE DELIVERY PHONE:** For CD if una to ctc on FSS freq, ctc New York ARTCC at 631-468-1425.

**AIRSPACE:** CLASS D svc 1100-0500Z‡; other times CLASS E.

TRSA svc ctc **APP CON** (within 15 NM)

**RADIO AIDS TO NAVIGATION:** NOTAM FILE ELM.

(L) (L) **VOR/DME** 109.65 ULW Chan 33(Y) N42°05.65' W77°01.49' 068° 7.1 NM to fld. 1631/12W.

VOR unusable:

Blw 10,000'

**ALPINE NDB (MHW)** 245 ALP N42°14.32' W76°45.84' 242° 7.4 NM to fld. 1287/12W.

ILS 109.1 I-UEK Rwy 06. Class IA. Unmonitored when twr clsd.

ILS 109.1 I-ELM Rwy 24. Class IB. Unmonitored when twr clsd.

**COMM/NAV/WEATHER REMARKS:** For Clnc Del when twr clsd ctc Buffalo Radio on 122.2.

## ENDICOTT

**TRI-CITIES** (CZG)(KCZG) 3 SW UTC-5(-4DT) N42°04.71' W76°05.78'

833 B NOTAM FILE CZG

**RWY 03-21:** H3900X75 (ASPH) S-30 MIRL

**RWY 03:** REIL. Road.

**RWY 21:** REIL. PAPI(P2R)—GA 4.0° TCH 40'. Road.

**SERVICE:** **FUEL** 100LL **LGT** Rotating bcn obscured north and west of arpt due to high terrain. **ACTIVATE** REIL Rwy 03 and Rwy 21; MIRL Rwy 03-21 —CTAF.

**AIRPORT REMARKS:** Attended, call arpt manager for specific attendance times. 24 hr self-svc fuel avbl with credit card. High terrain all quadrants. Rwy 21 extended safety area has sfc variations/depressions. Grvl access road crosses Rwy 03 apch. High tension towers 2000' from Rwy 21 thld 60-70' tall. Microwave tower +600' 2.8 miles out 3150' left of Rwy 21; apch-unmarked/unlighted 24:1 slope. Cold temperature airport. Altitude correction required at or below -17C.

**AIRPORT MANAGER:** 607-785-0467

**WEATHER DATA SOURCES:** AWOS-3 119.075 (607) 785-2926.

**COMMUNICATIONS:** CTAF/UNICOM 122.8

Ⓡ **BINGHAMTON APP/DEP CON** 118.6 (1100-0500Z‡)

Ⓡ **NEW YORK CENTER APP/DEP CON** 133.35 (0500-1100Z‡)

CLNC DEL 121.7

**CLEARANCE DELIVERY PHONE:** When Apch clsd, for CD ctc New York ARTCC at 631-468-1425.

**RADIO AIDS TO NAVIGATION:** NOTAM FILE BUF.

**BINGHAMTON (L) (L) VOR/DME** 112.2 CFB Chan 59 N42°09.45' W76°08.19' 169° 5.1 NM to fld. 1583/10W.

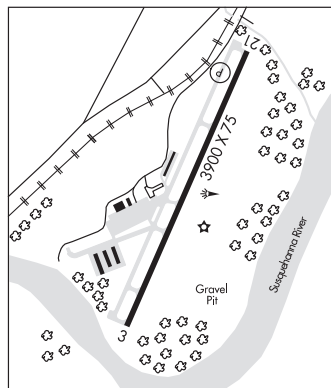
VOR unusable:

023°-033° byd 15 NM blo 6,000'

NEW YORK

L-30J

IAP



**EVERS SPB** (See NEW YORK on page 225)