

**STATE COLLEGE RGNL** (UNV)(KUNV) 3 N UTC-5(-4DT) N40°51.00' W77°50.86'  
 1231 B TPA—See Remarks Class I, ARFF Index B NOTAM FILE UNV  
**RWY 06-24:** H6701X150 (ASPH-GRVD) S-50, D-110

**DETROIT**  
**H-10H, 12J, L-30J**  
**IAP, AD**

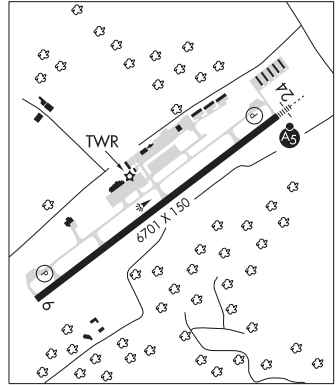
PCN 44 F/B/X/U HIRL 0.6% up SW  
**RWY 06:** REIL. PAPI(P4L)—GA 3.0° TCH 45'. RVR-R Rgt tfc.  
**RWY 24:** MALS. PAPI(P4R)—GA 3.0° TCH 55'. RVR-T Trees.

**RUNWAY DECLARED DISTANCE INFORMATION**

**RWY 06:** TORA-6701 TODA-6701 ASDA-6701 LDA-6701  
**RWY 24:** TORA-6701 TODA-6701 ASDA-6701 LDA-6701

**SERVICE:** S3 FUEL 100LL, JET A OX4 LGT When ATCT clsd ACTVT  
 MALS. RWY 24; REIL RWY 06; HIRL RWY 06-24 and twy lgts—CTAF.

**AIRPORT REMARKS:** Attended continuously. Glider act drg dalgt hrs. All alt within 10 NM all drctns, spcly along ridge 2 NM W and N of arpt. Student training 2.5 NM NE at Bellefonte Arpt. Acft on either end Rwy 06-24 cannot be seen on other end due to rwy grade. Rwy 06-24 grvd portion of rwy center 80'. PPR 24 hrs for unsked ACR ops with more than 9 pax seats btn 0400-0900Z± call AMGR. TPA 2192(961) single engine acft, 2692(1461) multi engine acft. Deicing equip avbl on aprn adj to Twy B btn Twys D and B3. 35' AGL lgt poles on the north edge of de-ice apron. Air cgo aprn rstd to acft less than 12500 lbs. Spl event fee for snl eng, multi eng acft and helicopters on university home football games wkends. Lndg fee for snl eng, multi eng acft and helicopters.



**AIRPORT MANAGER:** 814-865-4042

**WEATHER DATA SOURCES:** AWOS-3 127.65 (814) 865-8799. SAWRS.

**COMMUNICATIONS:** CTAF 128.475 D-ATIS 127.65 UNICOM 122.95

**NEW YORK CENTER APP/DEP CON** 134.8 (when twr clsd)

**TOWER** 128.475 (1100-0300Z±) **GND CON** 125.725 **CLNC DEL** 125.725 118.55 (when twr clsd)

**AIRSPACE:** CLASS D svc 1100-0300Z±; other times CLASS E.

**RADIO AIDS TO NAVIGATION:** NOTAM FILE AOO.

**PHILIPSBURG (VH) (H) VORTAC** 115.5 PSB Chan 102 N40°54.98' W77°59.56' 131° 7.7 NM to fld. 2443/10W.

VOR unusable:

- 005°-010° byd 40 NM
- 035°-060° byd 40 NM
- 095°-104° byd 40 NM
- 105°-115° byd 40 NM blo 18,000'
- 116°-145° byd 40 NM
- 146°-156° byd 40 NM blo 5,000'
- 146°-156° byd 70 NM
- 157°-171° byd 40 NM
- 172°-189° byd 40 NM blo 10,000'
- 172°-189° byd 78 NM
- 200°-205° byd 40 NM
- 320°-325° byd 40 NM

**ILS/DME** 111.7 I-UNV Chan 54 Rwy 24. Class IA.

**STEWARTSTOWN**

**SHOESTRING AVIATION AIRFIELD** (ØP2) 3 NW UTC-5(-4DT) N39°47.78' W76°38.78'

**WASHINGTON**

1000 NOTAM FILE IPT

**RWY 06U-24U:** 1000X100 (TURF)

**RWY 06U:** Tree.

**RWY 24U:** Rgt tfc.

**RWY 15-33:** 1000X100 (TURF)

**RWY 15:** Rgt tfc.

**RWY 33:** Thld dsplcd 500'. Tree.

**SERVICE:** S4

**AIRPORT REMARKS:** Attended irregularly. Extensive ultralgt activity on and invof arpt. Rwy 15-33 and Rwy 06-24 used for ultralight ops. Major airframe and powerplant repair for light sport acft only. Rwy 06U-24U & Rwy 15-33 mkd with orange patio blocks. Dsplcd thlds marked with three white paver each side. Rwy 24U dsplcd 183 ft.

**AIRPORT MANAGER:** 717-235-6724

**COMMUNICATIONS:** CTAF 122.9

**CLEARANCE DELIVERY PHONE:** For CD ctc Potomac Apch at 866-429-5882.

**STONYFORK** N41°41.72' W77°25.19' NOTAM FILE IPT.

**DETROIT**

(L) L) VOR/DME 108.6 SFK Chan 23 037° 2.3 NM to Grand Canyon Rgnl. 1985/8W.

**H-10H, L-30J**