

(WEBOX • WEBOX4)
WEBOX FOUR ARRIVAL

ST-111 [USAF]

LAUGHLIN AFB
 DEL RIO, TEXAS

ATIS ★ 114.4 269.9
 DEL RIO APP CON
 119.6 259.1
 LAUGHLIN TOWER ★
 125.2 307.375
 GND CON
 275.8

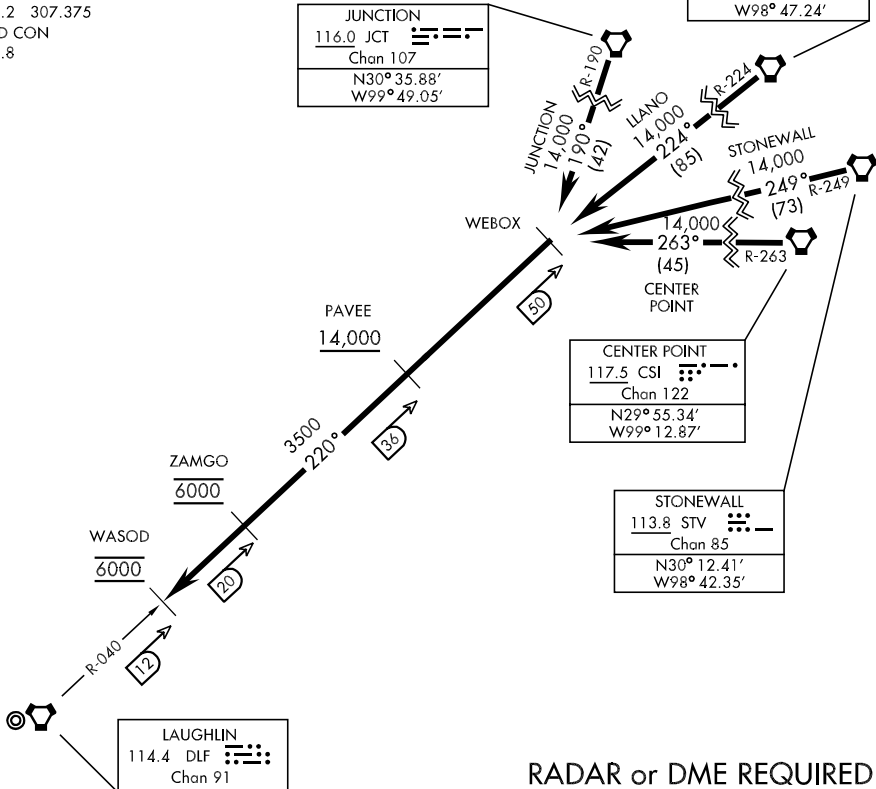
LLANO
108.2 LLO
Chan 19
N30° 47.78'
W98° 47.24'

JUNCTION
116.0 JCT
Chan 107
N30° 35.88'
W99° 49.05'

CENTER POINT
117.5 CSI
Chan 122
N29° 55.34'
W99° 12.87'

STONEWALL
113.8 STV
Chan 85
N30° 12.41'
W98° 42.35'

LAUGHLIN
114.4 DLF
Chan 91



SC-3, 30 NOV 2023 to 28 DEC 2023

SC-3, 30 NOV 2023 to 28 DEC 2023

ARRIVAL ROUTE DESCRIPTION

JUNCTION Transition (JCT.WEBOX4): From over JCT VORTAC via JCT R-190 to WEBOX. Thence...

LLANO Transition (LLO.WEBOX4): From over LLO VORTAC via LLO R-224 to WEBOX. Thence...

STONEWALL Transition (STV.WEBOX4): From over STV VORTAC via STV R-249 to WEBOX. Thence...

CENTER POINT Transition (CSI.WEBOX4): From over CSI VORTAC via CSI R-263 to WEBOX. Thence...

...From over DLF R-040/50 (WEBOX) via DLF R-040 to DLF R-040/12 (WASOD).
 Expect vectors for an instrument approach to runway in use.

WEBOX FOUR ARRIVAL (WEBOX • WEBOX4)

DEL RIO, TEXAS
 LAUGHLIN AFB