

WAAS CH 50213 W17A	APP CRS 175°	Rwy Idg 8002 TDZE 1165 Apt Elev 1167
--	------------------------	---

RNAV (GPS) RWY 17

ENID WOODRING RGNL (WDG)

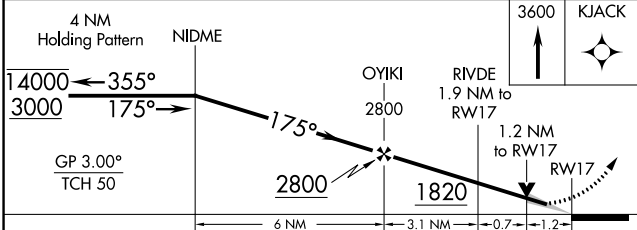
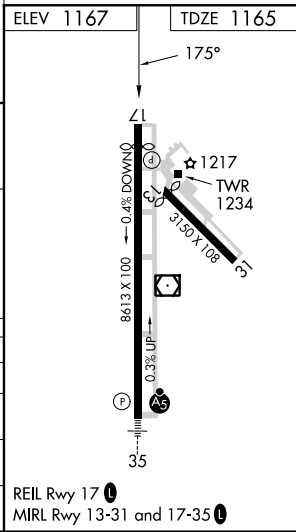
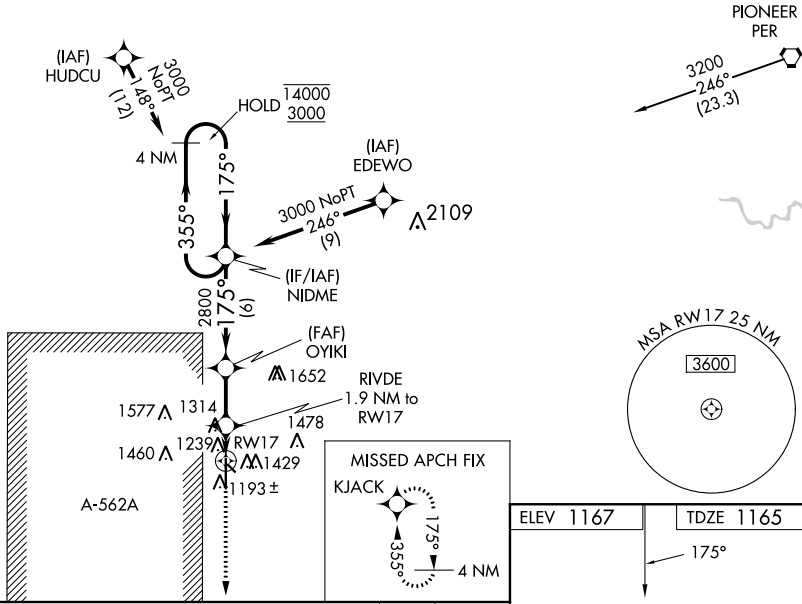
RNP APCH-GPS.

⚠ Circling Rwy 13 NA at night. For uncompensated Baro-VNAV systems, LNAV/VNAV NA below -17°C or above 54°C.

MISSED APPROACH: Climb to 3600 direct KJACK and hold.

AWOS-3PT 123.725	VANCE APP CON ★ 121.3 346.325	WOODRING TOWER ★ 118.9 (CTAF) 0 257.95	GND CON 121.925
----------------------------	---	--	---------------------------

Procedure NA for arrival on PER VORTAC
airway radials 173 CW 335.



CATEGORY	A	B	C	D	E
LPV DA		1415-3/4	250 (300-3/4)		
LNAV/VNAV DA		1415-3/4	250 (300-3/4)		
LNAV MDA	1580-1	415 (500-1)	1580-1 1/8	415 (500-1 1/8)	
C CIRCLING	1760-1	593 (600-1)	1820-1 3/4	1880-2 1/4	2000-3
			653 (700-13/4)	713 (800-2 1/4)	833 (900-3)

REIL Rwy 17 **0**
MRL Rwy 13-31 and 17-35 **0**

SC-1, 30 NOV 2023 to 28 DEC 2023

SC-1, 30 NOV 2023 to 28 DEC 2023