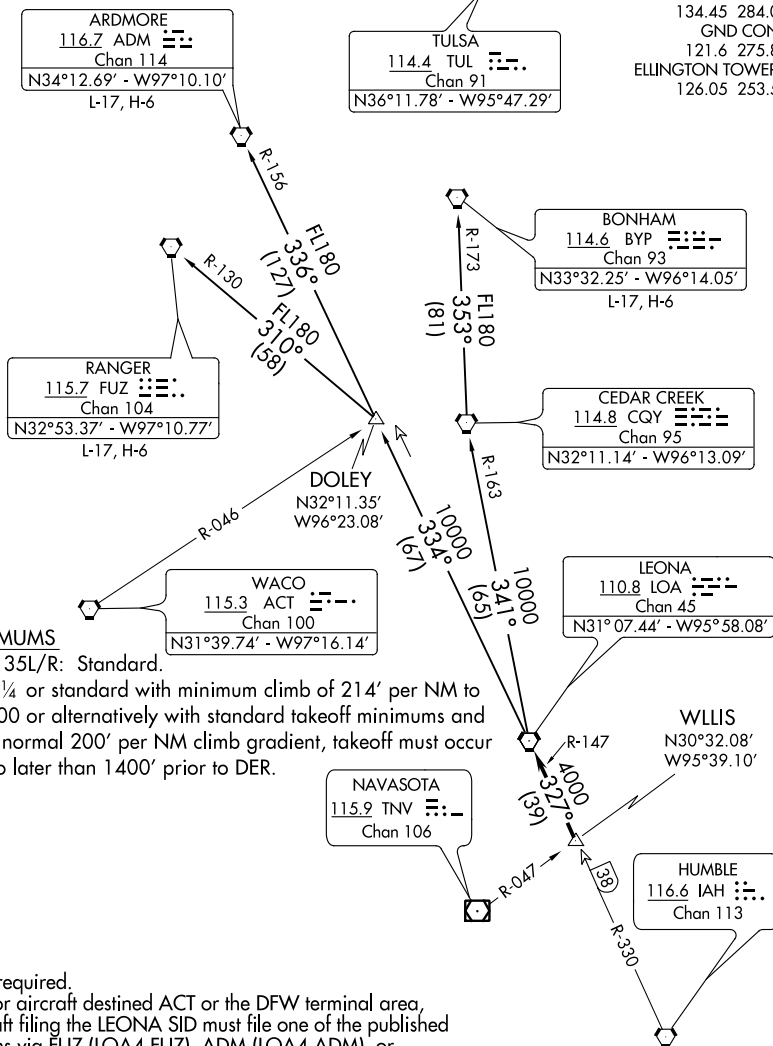


TOP ALTITUDE: ASSIGNED BY ATC



TAKEOFF MINIMUMS

Rwys 4, 17L/R, 35L/R: Standard.

Rwy 22: 200-1¼ or standard with minimum climb of 214' per NM to 300 or alternatively with standard takeoff minimums and a normal 200' per NM climb gradient, takeoff must occur no later than 1400' prior to DER.

NOTE: RADAR required.

NOTE: Except for aircraft destined ACT or the DFW terminal area, all aircraft filing the LEONA SID must file one of the published transitions via FUZ (LOA4.FUZ), ADM (LOA4.ADM), or BYP (LOA4.BYP).

NOTE: RANGER TRANSITION: For aircraft overflying west/northwest of the DFW terminal area FL240 and above.

NOTE: ARDMORE TRANSITION: For aircraft overflying north/northwest of the DFW terminal area FL240 and above.

NOTE: BONHAM TRANSITION: For aircraft overflying/landing TUL VORTAC FL240 and above.

NOTE: Chart not to scale.

(NARRATIVE ON FOLLOWING PAGE)

LEONA FOUR DEPARTURE

(LOA4.LOA) 07OCT21

HOUSTON, TEXAS
ELLINGTON (EFD)

SC-5, 30 NOV 2023 to 28 DEC 2023